

Aluminium manifolds

Series RP



The aluminum manifolds are inserted in the pneumatic circuitry as a compact and modular element for the distribution of compressed air.

Technical sheet

FLUIDS		Compressed air (for different fluid please contact our Technical Dept.)
APPLICATIONS		Pneumatic circuits
SUGGESTED TUBES		Plastic: TPU, PA, PE, etc. Metal: copper, aluminium, steel
TECHNICAL FEATURES	Temperature and pressure	The temperatures are within the range of the working environment (from -20° C to + 100° C), the maximum operating pressure is <12 bar.
	Thread type	BSP parallel ISO 228
	Material	EN-AW-6005-T6 alloy extruded according to UNI EN 755-2: 2016
MECHANICAL FEATURES	Rm (Minimum breaking load)	255 Mpa
	Rp 0,2 (yield strenght)	215 Mpa
	Minimum elongation %	8mm
	Typical hardness	85 HBW (brinell)
	1 Mpa	=10,1972 Kg/cm2
NOTE		These values, indicated in the 755-2 standard, refer to a profile subject to mechanical traction, not to a differently applied load (lateral, at the tip).

ART.

RIPUL

In-line output manifolds

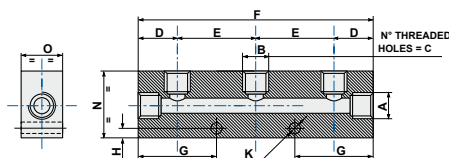


FIGURE 1

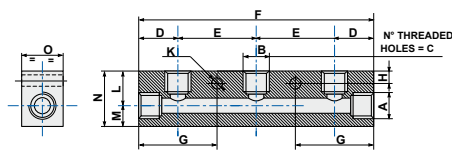


FIGURE 2

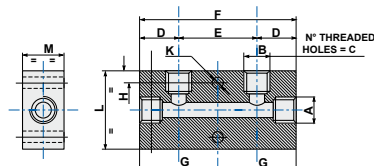


FIGURE 3

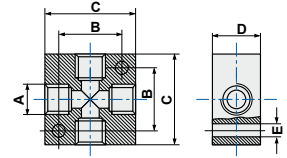
COD.	FIG.	A	B	C	D	E	F	G	H	K	L	M	N	O	THREAD		
RIPUL1512	3	1/4"	1/8"	2	15	30	60	30	4,5	5,25	30	20	/	/	4 WAYS 2-1/4" 2-1/8"	5	75,76
RIPUL1513	1	1/4"	1/8"	3	15	30	90	30	4,5	5,25	/	/	30	20	5 WAYS 2-1/4" 3-1/8"	5	116,29
RIPUL1514	1	1/4"	1/8"	4	15	30	120	30	4,5	5,25	/	/	30	20	6 WAYS 2-1/4" 4-1/8"	5	156,50
RIPUL1515	1	1/4"	1/8"	5	15	30	150	30	4,5	5,25	/	/	30	20	7 WAYS 2-1/4" 5-1/8"	5	196,50
RIPUL1516	1	1/4"	1/8"	6	15	30	180	30	4,5	5,25	/	/	30	20	8 WAYS 2-1/4" 6-1/8"	5	236,44
RIPUL1522	3	3/8"	1/4"	4	18	36	72	36	6	6,5	40	20	/	/	4 WAYS 2-3/8" 2-1/4"	5	116,00
RIPUL1523	2	3/8"	1/4"	3	18	36	108	36	6	6,5	19	11	30	20	5 WAYS 2-3/8" 3-1/4"	5	120,50
RIPUL1524	2	3/8"	1/4"	4	18	36	144	36	6	4,5	19	11	30	20	6 WAYS 2-3/8" 4-1/4"	5	163,90
RIPUL1525	2	3/8"	1/4"	5	18	36	180	36	6	6,5	19	11	30	20	7 WAYS 2-3/8" 5-1/4"	5	207,50
RIPUL1526	2	3/8"	1/4"	6	18	36	216	36	6	6,5	19	11	30	20	8 WAYS 2-3/8" 6-1/4"	5	251,50
RIPUL1542	3	1/2"	1/4"	2	22	36	80	40	6	6,5	40	28	/	/	4 WAYS 2-1/2" 2-1/4"	5	165,80
RIPUL1543	1	1/2"	1/4"	3	22	36	116	40	6	6,5	/	/	40	28	5 WAYS 2-1/2" 3-1/4"	5	243,85
RIPUL1544	1	1/2"	1/4"	4	22	36	152	40	6	6,5	/	/	40	28	6 WAYS 2-1/2" 4-1/4"	5	323,13
RIPUL1545	1	1/2"	1/4"	5	22	36	188	40	6	6,5	/	/	40	28	7 WAYS 2-1/2" 5-1/4"	5	402,24
RIPUL1546	1	1/2"	1/4"	6	22	36	224	40	6	6,5	/	/	40	28	8 WAYS 2-1/2" 6-1/4"	5	478,56
RIPUL1552	3	1/2"	3/8"	2	22	36	80	40	6	6,5	40	20	/	/	4 WAYS 2-1/2" 2-3/8"	5	161,00
RIPUL1553	1	1/2"	3/8"	3	22	36	116	40	6	6,5	/	/	40	28	5 WAYS 2-1/2" 3-3/8"	5	236,75
RIPUL1554	1	1/2"	3/8"	4	22	36	152	40	6	6,5	/	/	40	28	6 WAYS 2-1/2" 4-3/8"	5	311,50
RIPUL1555	1	1/2"	3/8"	5	22	36	188	40	6	6,5	/	/	40	28	7 WAYS 2-1/2" 5-3/8"	5	386,66
RIPUL1556	1	1/2"	3/8"	6	22	36	224	40	6	6,5	/	/	40	28	8 WAYS 2-1/2" 6-3/8"	5	463,36

ART. **RIP4V**

Aluminium cross manifold



COD.	A	B	C	D	E		
RIP4V1815	1/8"	17	25	15	4,5	25	17,02
RIP4V1816	1/8"	23	30	16	4,5	25	29,69
RIP4V1418	1/4"	23	30	18	4,5	25	26,01
RIP4V1420	1/4"	26	40	20	5,5	25	61,00
RIP4V3820	3/8"	30	40	20	5,5	10	47,38
RIP4V3825	3/8"	33	50	25	5,5	10	124,96
RIP4V1230	1/2"	33	50	30	5,5	10	131,73



ART. **RIPUC**

Opposite output manifolds

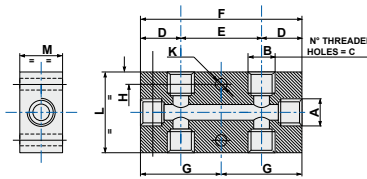


FIGURE 1

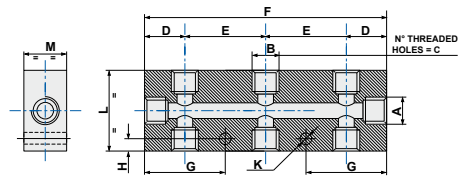


FIGURE 2

COD.	FIG.	A	B	C	D	E	F	G	H	K	L	M	THREAD		
RIPUC15122	1	1/4"	1/8"	4	15	30	60	30	4,5	5,25	30	20	6 WAYS 2-1/4" 4-1/8"	5	72,00
RIPUC15133	2	1/4"	1/8"	6	15	30	90	30	4,5	5,25	30	20	8 WAYS 2 1/4" 6-1/8"	5	110,00
RIPUC15144	2	1/4"	1/8"	8	15	30	120	30	4,5	5,25	30	20	10 WAYS 2-1/4" 8-1/8"	5	148,62
RIPUC15155	2	1/4"	1/8"	10	15	30	150	30	4,5	5,25	30	20	12 WAYS 2-1/4" 10-1/8"	5	186,84
RIPUC15222	1	3/8"	1/4"	4	18	36	72	36	6	6,5	40	20	6 WAYS 2-3/8" 4-1/4"	5	105,38
RIPUC15233	2	3/8"	1/4"	6	18	36	108	36	6	6,5	40	20	8 WAYS 2-3/8" 6-1/4"	5	163,17
RIPUC15244	2	3/8"	1/4"	8	18	36	144	36	6	6,5	40	20	10 WAYS 2-3/8" 8-1/4"	5	218,81
RIPUC15255	2	3/8"	1/4"	10	18	36	180	36	6	6,5	40	20	12 WAYS 2-3/8" 10-1/4"	5	280,50
RIPUC15422	1	1/2"	1/4"	4	22	36	80	40	6	6,5	40	28	6 WAYS 2-1/2" 4-1/4"	5	158,70
RIPUC15433	2	1/2"	1/4"	6	22	36	116	40	6	6,5	40	28	8 WAYS 2-1/2" 6-1/4"	5	233,50
RIPUC15444	2	1/2"	1/4"	8	22	36	152	40	6	6,5	40	28	10 WAYS 2-1/2" 8-1/4"	5	307,31
RIPUC15455	2	1/2"	1/4"	10	22	36	188	40	6	6,5	40	28	12 WAYS 2-1/2" 10-1/4"	5	381,30
RIPUC15522	1	1/2"	3/8"	4	22	36	80	40	6	6,5	40	28	6 WAYS 2-1/2" 4-3/8"	5	148,65
RIPUC15533	2	1/2"	3/8"	6	22	36	116	40	6	6,5	40	28	8 WAYS 2-1/2" 6-3/8"	5	218,93
RIPUC15544	2	1/2"	3/8"	8	22	36	152	40	6	6,5	40	28	10 WAYS 2-1/2" 8-3/8"	5	286,50
RIPUC15555	2	1/2"	3/8"	10	22	36	188	40	6	6,5	40	28	12 WAYS 2-1/2" 10-3/8"	5	356,67