

Brass push-in fittings

Series MINI



The brass push-in fittings - Mini series combines light weight with maximum strength. It can be used with PA, TPU, Ny and PE hoses; the design of the O-ring seat ensures a seal even with polished and particularly slick surfaces.



Components

- 1 Fitting body
- 2 Elastic ring
- 3 Swivel stem
- 4 O-ring seal
- 5 Thrust and crimping sleeve



Technical sheet

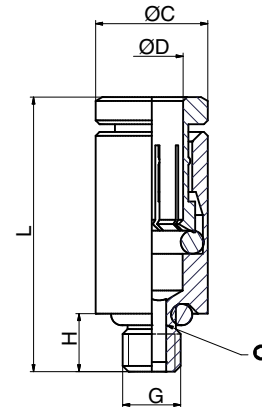
FLUIDS	Compressed air, some liquids (for different fluid please contact our Technical Dept.)	
APPLICATIONS	BSP parallel UNI-ISO 228; BSP tapered UNI-ISO 7; Metric ISO/R 262	
SUGGESTED TUBES	TPU (Polyurethane), PA11/PA12 (Polyamide), TPE (Polyethylene), TPA (Polyurethane/Copolyester)	
TUBE TOLERANCES	Diam. from 4 to 10 mm +/- 0,05 - Diam. from 12 mm +/- 0,1	
THREAD TYPE	Cylindrical with O-ring.	
RECOMMENDED LIMIT VALUE	Maximum torque	Thread M3 = 0,4 Nm; Thread M6 and M6x0,75 = 1,3 Nm
	Temperature	The working temperatures range is between -20°C and +70°C
	Pressure	The maximum working pressure is 10 Bar.
MATERIALS	Body	Nichel-plated
	Grip	Brass
	Seals	Silicon free NBR
IMPORTANT NOTE	The raw material is non-magnetic, however after cold working, a small amount of austenite could be transformed into martensite, which could be very weakly magnetic.	

ART. **RDR**

Straight male adaptor parallel



COD.	D	G	C	H	L	Ø		
RDR320	2,0	M3	5,4	3	13,5	1,5	100	1,50
RDR330	3,0	M3	5,8	3	14,5	1,5	100	2,00
RDR331	3,17	M3	5,8	3	14,0	1,5	100	1,50
RDR340	4,0	M3	7,0	3	15,5	1,5	100	2,50
RDR340-MH05	4,0	M3	6,9	5	17,5	1,5	100	2,50
RDR520	2,0	M5	5,4	3,5	13,0	1,5	100	1,50
RDR530	3,0	M5	5,8	3,5	14,5	2,0	100	1,50
RDR531	3,17	M5	5,8	3,5	14,5	2,0	100	1,50
RDR540	4,0	M5	5,8	3,5	16,5	2,0	100	2,00
RDR640-FH12	4,0	M6	7	12	24,5	2,0	100	3,00
RDR640-MH12	4,0	M6	7	12	24,5	2,0	100	3,50

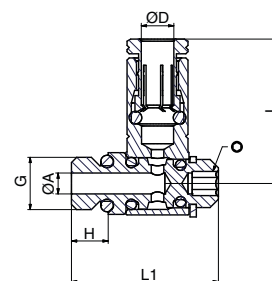


ART. **RGR**

Complete single banjo with stem



COD.	D	G	C	H	L	L1	Ø		
RGR320	2	M3	1,4	3,0	13,5	13,5	1,5	100	3,63
RGR330	3	M3	1,4	3,0	13,5	13,5	1,5	100	3,52
RGR331	3,17	M3	1,4	3,0	13,5	13,5	1,5	100	3,34
RGR340	4,2	M3	1,4	3,0	13,5	13,5	1,5	100	3,68
RGR340-MH05	4,2	M3	1,4	5,0	13,5	13,5	1,5	100	3,80
RGR520	2	M5	2,0	3,5	14	14	2,0	100	3,64
RGR530	3	M5	2,0	3,5	14	14	2,0	100	3,62
RGR531	3,2	M5	2,0	3,5	13,5	13,5	2,0	100	3,54
RGR540	4,2	M5	2,0	3,5	13,5	13,5	2,0	100	3,82
RGR640-FH12	4,2	M6	2,0	12	13,5	13,5	2,0	100	6,01
RGR640-MH12	4,0	M6	2,0	12	13,5	13,5	2,0	100	5,94

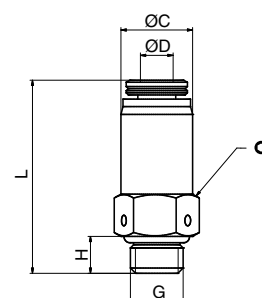


ART. **RDSR**

Quick exhaust straight male parallel adapter



COD.	L	ØC	ØD	G	H	Ø		
RDSR520	18,5	6,8	2,0	M5	3,5	7	100	2,00
RDSR530	18,5	6,8	3,0	M5	3,5	7	100	3,00
RDSR531	18,3	6,8	3,0	M5	3,5	7	100	3,00
RDSR540	19,5	7,8	4,2	M5	3,5	8	100	4,00

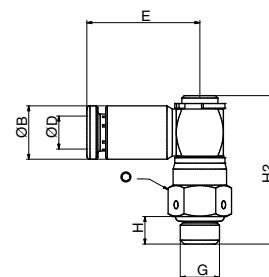


ART. **RGSR**

Quick exhaust swivel elbow parallel adapter



COD.	ØB	ØD	H	H2	E	G	⊙	📦	📊
RGSR520	5,8	2,1	3,5	19	14	M5	7	100	5,00
RGSR530	5,8	3,0	3,5	19	14	M5	7	100	5,00
RGSR531	5,8	3,2	3,5	19	14	M5	7	100	5,00
RGSR540	5,8	4,2	3,5	19	14	M5	7	100	5,00

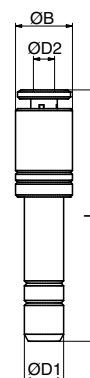


ART. **RRR**

Plug-in reducer



COD.	ØD1	ØD2	ØB	L	📦	📊
RRR3020	2,0	3,2	5,8	23,2	100	2,00
RRR4020	4,0	2,0	5,8	25,5	100	2,00
RRR4030	4,0	3,0	5,8	25,5	100	2,50

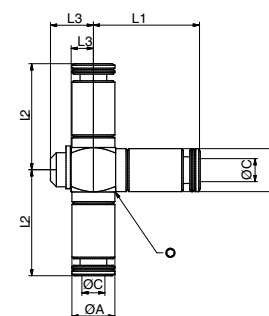


ART. **RTR020**

T combined connector



COD.	ØC	L1	L2	ØB	ØA	L3	⊙	📦	📊
RTR020	2,10	13,7	12	5,8	5,8	3	6	100	4,50



ART. **RTR330**

T combined thread



COD.	ØC	L1	L2	G	H	ØB	ØA	L3	⊙	📦	📊
RTR330	3,0	7,7	14	M3	3	5,8	5,8	5,8	6	100	4,50

