

Stainless steel push-in fittings

Series SS



“SS” series push-in fittings are “oil free” and manufactured according to the ISO norms of reference.

Ordering code

SS C 08 M5

SERIES

SS = Stainless steel push-in fittings

MODEL TYPE

- C-G** = Straight male adaptor
- C** = Straight male tapered adaptor
- F-G** = Straight female adaptor (parallel thread)
- H** = Complete single banjo tapered
- L-G** = Swivel elbow male adaptor (parallel)
- L** = Swivel elbow adaptor (tapered)
- LF** = Female swivel elbow adaptor (parallel thread)
- B-G** = Swivel male stud T parallel
- B** = Swivel male stud T tapered
- GJ** = Plug-in reducer
- M** = Bulkhead connector
- U** = Equal straight connector
- G** = Reducer straight connector
- V** = Elbow connector
- E** = T connector
- Y** = Y connector
- P** = Plug

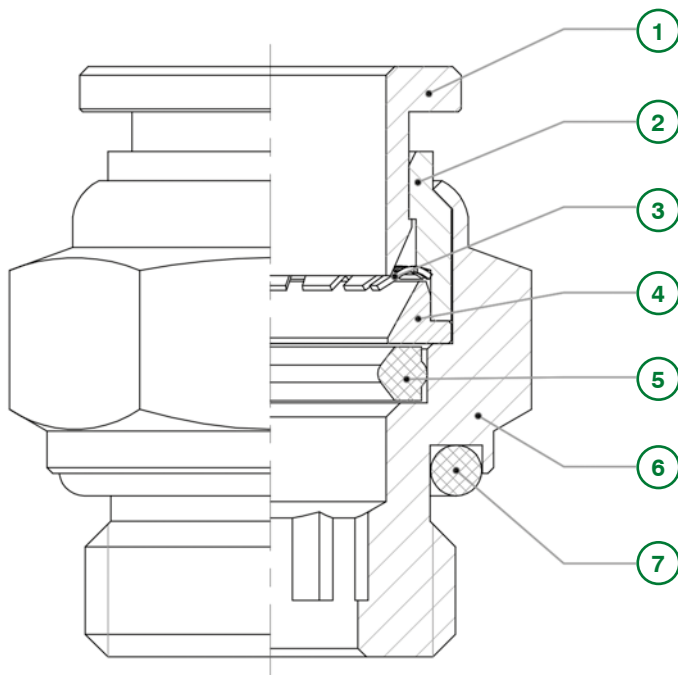
TUBE CONNECTION

04 ... 14 = Tube diameter (mm)

THREADED CONNECTION

- M5** = M5 x 0,8
- 01** = 1/8" Tapered
- 02** = 1/4" Tapered
- 03** = 3/8" Tapered
- 04** = 1/2" Tapered
- G01** = 1/8" Parallel
- G02** = 1/4" Parallel
- G03** = 3/8" Parallel
- G04** = 1/2" Parallel

See assembly instructions in the appendix on page 211



Components

- 1** Thrust sleeve
- 2** Lock ring
- 3** Crimping gripper
- 4** Supporting ring
- 5** Elastic ring
- 6** Fitting body
- 7** O-Ring seal



Technical sheet

FLUIDS		Compressed air, water, steam (for different fluid please contact our Technical Dept.)
APPLICATIONS		Pneumatic equipments which are applied widely in the range of Industry such as food service industry, chemical industry and medical industry. In general where required to ensure anti-corrosion and acid resistant, or usage at high temperature.
SUGGESTED TUBES		TPU (Polyurethane), PA11/PA12 (Polyamide), TPE (Polyethylene), TPA (Polyurethane/Copolyester)
TUBES TOLERANCES		Diam. between 4 and 10 mm +/- 0,05 Diam. from 12 mm +/- 0,1
RECOMMENDED LIMIT VALUES	Temperature	The working temperatures range is between -20°C and +140°C
	Working pressure	The working pressure range is between 0 and 1,5 MPa (0-15 bar)
	Max. pressure	1,8 MPa (18 bar)
	Note	For more complete informations please read the technical catalogue of your tube supplier.
THREAD TYPE		BSP paralell UNI-ISO 228; BSP tapered UNI-ISO 7; Metric ISO/R 262
MATERIALS	Body, sleeve, collar and back ring	Stainless Steel SUS316L
	Spring	Stainless Steel SUS316L
	Seals	FKM/FPM
IMPORTANT NOTE		The raw material is non-magnetic, however after cold working, a small amount of austenite could be transformed into martensite, which could be very weakly magnetic.

Test results to FDA specifications compatibility, made by on behalf of the manufacturer

	Test report N.	Data	Period (days)	Item	Main material	Test purpose
A	TRHZ1208110	06/08/2012	6	Seal ring	Viton FPM fluororubber (FKM)	The compliance with the food and drug administration regulations for determining the amount of chloroform-soluble extractives (ppm) from closures with sealing gaskets for food containers
B	TRHZ1208111	06/08/2012	6	Elbow fitting mod SSV	Stainless Steel SUS316L	To determine total chromium content in the submitted sample
C	TRHZ1208112	06/08/2012	6	Straight Fitting mod. SSC-G	Stainless Steel SUS316L	To determine total chromium content in the submitted sample

	Test method (ref. FDA 21 CFR 177.1210)	Test result	Conclusion
A	Immersion for 2 hours in distilled water at 212°F	Detected value 13,0 Max permissible 50,0	When tested as specified, the test results of the submitted sample comply with the FDA specifications for determining the amount of chloroform-soluble extractives for closures (clos)
	Immersion for 2 hours in alcohol 8% at 212°F	Detected value 7,0 Max permissible 50,0	
	Immersion for 2 hours in n-heptane at 150°F	Detected value 11,5 Max permissible 50,0	
B	Titration method	Detected value 16,38% Max permissible >=10,5%	When tested as specified, the test results of the submitted sample is suitable for contact with food
C	Titration method	Detected value 17,18% Max permissible >=10,5%	When tested as specified, the test results of the submitted sample is suitable for contact with food

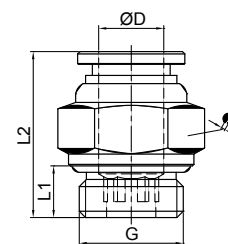


ART. **SSC-G**

Straight male adaptor (parallel)



COD.	ØD	G	L1	L2	○	🔧	📦	📊
SSC04-M5	4	M5	4	19,3	2	10	1	6,60
SSC04-G01	4	1/8	5,5	17,3	3	13	1	9,80
SSC04-G02	4	1/4	6,5	21,2	3	17	1	16,00
SSC06-M5	6	M5	4	20,6	2	12	1	10,00
SSC06-G01	6	1/8	5,5	18,8	4	13	1	9,80
SSC06-G02	6	1/4	6,5	18,8	4	16	1	16,00
SSC08-G01	8	1/8	5,5	23,2	5	14	1	13,00
SSC08-G02	8	1/4	6,5	20,7	6	16	1	15,00
SSC08-G03	8	3/8	7,5	22,5	6	21	1	24,00
SSC10-G02	10	1/4	6,5	26,4	8	17	1	22,00
SSC10-G03	10	3/8	7,5	22,9	8	20	1	26,00
SSC10-G04	10	1/2	9,0	24	8	24	1	38,00
SSC12-G02	12	1/4	6,5	31,3	8	21	1	34,00
SSC12-G03	12	3/8	7,5	25,4	10	20	1	28,00
SSC12-G04	12	1/2	9	25,4	10	24	1	43,60
SSC14-G03	14	3/8	7,5	33	10	22	1	38,00
SSC14-G04	14	1/2	9,0	32	10	24	1	43,00

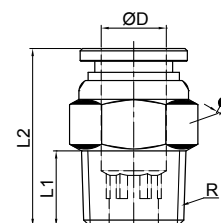


ART. **SSC**

Straight male adaptor (tapered)



COD.	ØD	R	L1	L2	○	🔧	📦	📊
SSC04-01	4	1/8	7,5	16,8	3	10	1	9,80
SSC04-02	4	1/4	9,5	21	3	14	1	14,00
SSC06-01	6	1/8	7,5	19,3	4	12	1	9,80
SSC06-02	6	1/4	9,5	19,8	4	14	1	16,00
SSC06-03	6	3/8	10,5	22	4	17	1	22,00
SSC06-04	6	1/2	12,5	24	4	21	1	42,00
SSC08-01	8	1/8	7,5	23,7	6	14	1	13,00
SSC08-02	8	1/4	9,5	22,2	6	14	1	15,00
SSC08-03	8	3/8	10,5	22,5	6	17	1	20,00
SSC08-04	8	1/2	12,5	24	6	21	1	38,00
SSC10-02	10	1/4	9,5	26,4	8	17	1	19,72
SSC10-03	10	3/8	10,5	22,9	8	17	1	26,00
SSC10-04	10	1/2	12,5	25	8	21	1	36,00
SSC12-02	12	1/4	9,5	31,3	8	21	1	36,00
SSC12-03	12	3/8	10,5	26,4	10	20	1	28,00
SSC12-04	12	1/2	13,5	26,4	10	21	1	43,60
SSC14-04	14	1/2	12,5	33	10	22	1	43,00

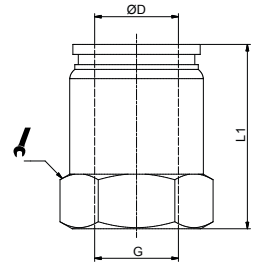


ART. **SSCF-G**

Straight female adaptor (parallel)



COD.	ØD	G	L1			
SSCF04-M5	4	M5	20,2	12	1	8,00
SSCF04-01	4	1/8	21,2	12	1	8,00
SSCF04-02	4	1/4	21	17	1	18,00
SSCF06-01	6	1/8	21,6	14	1	16,00
SSCF06-02	6	1/4	21	17	1	18,00
SSCF08-01	8	1/8	25	17	1	16,00
SSCF08-02	8	1/4	24,5	17	1	21,00

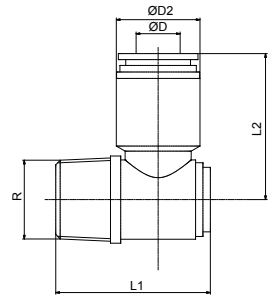


ART. **SSH**

Complete single banjo tapered



COD.	ØD	R	L1	L2	D2		
SSH04-01	4	1/8	25,5	26	10,5	1	24,00
SSH06-01	6	1/8	25,5	26	12,5	1	28,00
SSH06-02	6	1/4	28	28	12,5	1	38,00
SSH08-01	8	1/8	25,5	29	14,5	1	28,00
SSH08-02	8	1/4	28	30	14,5	1	40,00
SSH08-03	8	3/8	33,2	33	14,5	1	66,00
SSH10-02	10	1/4	28	32	17,5	1	46,00
SSH10-03	10	3/8	33,2	35	17,5	1	74,00
SSH12-02	12	1/4	28	34	20,5	1	56,00
SSH12-03	12	3/8	33,2	36,5	20,5	1	84,00
SSH12-04	12	1/2	37,2	38	20,5	1	120,00

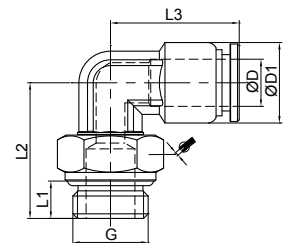


ART. **SSL-G**

Swivel elbow male adaptor (parallel)



COD.	ØD	G	L1	L2	L3	ØD1			
SSL04-M5	4	M5	4	17,5	18,3	10	10	1	12,00
SSL04-G01	4	1/8	5,5	20	18,3	10	13	1	16,00
SSL04-G02	4	1/4	6,5	27,5	23	10,5	14	1	24,00
SSL06-M5	6	M5	4	17,5	20,3	12	10	1	16,00
SSL06-G01	6	1/8	5,5	22	20,3	12	13	1	20,00
SSL06-G02	6	1/4	6,5	23	20,3	12	16	1	26,00
SSL06-G03	6	3/8	7,5	28	24	12,5	17	1	34,00
SSL08-G01	8	1/8	5,5	22,5	22,3	14	13	1	24,00
SSL08-G02	8	1/4	6,5	23,5	22,3	14	16	1	30,00
SSL08-G03	8	3/8	7,5	28	27	14,5	17	1	40,00
SSL10-G01	10	1/8	5,5	32,3	30,5	17,5	17	1	36,00
SSL10-G02	10	1/4	6,5	31	26,4	17	17	1	46,00
SSL10-G03	10	3/8	7,5	28,5	26,4	17	20	1	50,00
SSL10-G04	10	1/2	9	31	30,5	17,5	21	1	48,50
SSL12-G02	12	1/4	6,5	30,5	34	20,5	14	1	56,00
SSL12-G03	12	3/8	7,5	30	29,4	20	20	1	62,00
SSL12-G04	12	1/2	9	30,5	29,4	20	24	1	76,00
SSL14-G03	14	3/8	7,5	33	37	22	17	1	96,00
SSL14-G04	12	1/2	9	35	37	22	21	1	100,00

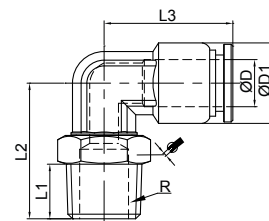


ART. **SSL**

Swivel elbow adaptor (tapered)



COD.	ØD	R	L1	L2	L3	ØD1			
SSL04-01	4	1/8	7,5	20	18,3	10	12	1	14,00
SSL04-02	4	1/4	9,5	27,5	23	10,5	14	1	22,00
SSL06-01	6	1/8	7,5	23	20,3	12	12	1	19,00
SSL06-02	6	1/4	9,5	23	20,3	12	14	1	22,00
SSL06-03	6	3/8	10,5	28	24	12,5	17	1	30,00
SSL08-01	8	1/8	7,5	23,5	22,3	14	12	1	24,20
SSL08-02	8	1/4	9,5	23,5	22,3	14	14	1	27,90
SSL08-03	8	3/8	10,5	28	27	14,5	17	1	34,00
SSL10-02	10	1/4	9,5	33	26,4	17	17	1	46,00
SSL10-03	10	3/8	10,5	30	26,4	17	17	1	46,00
SSL12-02	12	1/4	9,5	30,5	34	20,5	14	1	52,00
SSL12-03	12	3/8	10,5	31,5	29,4	20	17	1	62,00
SSL12-04	12	1/2	13,5	33,5	29,4	20	21	1	74,90

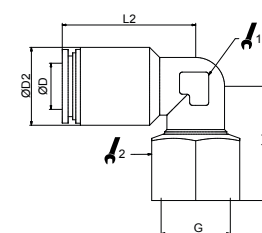


ART. **SSLF**

Female swivel elbow adaptor (parallel thread)



COD.	ØD	G	L1	L2	D2				
SSLF04-01	4	1/8	25,5	23	10,5	9,2	10	1	24,00
SSLF06-01	6	1/8	27	24	12,5	9,2	14	1	26,00
SSLF06-02	6	1/4	28	24	12,5	9,2	17	1	32,00
SSLF08-01	8	1/8	27	27	14,5	11,2	14	1	30,00
SSLF08-02	8	1/4	28	27	14,5	11,2	17	1	34,00

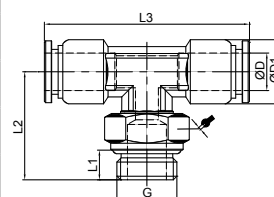


ART. **SSB-G**

Swivel male stud T parallel

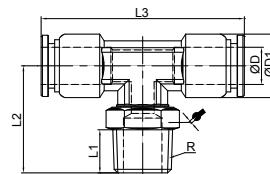


COD.	ØD	G	L1	L2	L3	ØD1			
SSB04-M5	4	M5	4	17,5	36,6	10	10	1	18,00
SSB04-G01	4	1/8	5,5	20	36,6	10	13	1	22,00
SSB06-M5	6	M5	4	17,5	40,6	12	10	1	22,00
SSB06-G01	6	1/8	5,5	22	40,6	12	13	1	27,00
SSB06-G02	6	1/4	6,5	23	40,6	12	16	1	34,00
SSB08-G01	8	1/8	5,5	22,5	44,6	14	13	1	34,00
SSB08-G02	8	1/4	6,5	23,5	44,6	14	16	1	39,80
SSB10-G02	10	1/4	6,5	31	52,8	17	17	1	60,00
SSB10-G03	10	3/8	7,5	28,5	52,8	17	20	1	64,00
SSB12-G03	12	3/8	7,5	30	58,8	20	20	1	86,00
SSB12-G04	12	1/2	9	30,5	58,8	20	24	1	98,00

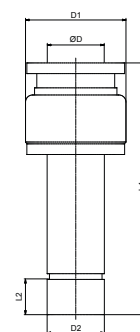


ART. SSB
Swivel male stud T tapered

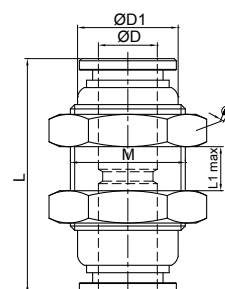

COD.	ØD	R	L1	L2	L3	ØD1			
SSB04-01	4	1/8	7,5	20	36,6	10	12	1	20,00
SSB06-01	6	1/8	7,5	23	40,6	12	12	1	26,00
SSB06-02	6	1/4	9,5	23	40,6	12	14	1	30,00
SSB08-01	8	1/8	7,5	23,5	44,6	14	12	1	22,00
SSB08-02	8	1/4	9,5	23,5	44,6	14	14	1	37,00
SSB10-02	10	1/4	9,5	33	52,8	17	17	1	56,00
SSB10-03	10	3/8	10,5	30	52,8	17	17	1	58,00
SSB12-03	12	3/8	10,5	31,5	58,8	20	17	1	80,00
SSB12-04	12	1/2	13,5	33,5	58,8	20	21	1	96,00


ART. SSGJ
Plug-in reducer


COD.	ØD	D1	D2	L1	L2		
SSGJ06-04	4	10,5	6	41	6,7	1	6,00
SSGJ08-06	6	12,5	8	44	7,0	1	10,00
SSGJ08-04	4	10,5	8	43	7,0	1	8,00
SSGJ10-08	8	14,5	10	47	8,0	1	12,00
SSGJ10-06	6	12,5	10	47	8,0	1	12,00
SSGJ12-10	10	17,5	12	53	8,7	1	20,00
SSGJ12-08	8	14,5	12	52	8,7	1	16,00
SSGJ14-10	10	17,5	14	56	10,0	1	30,00


ART. SSM
Bulkhead connector


COD.	ØD	ØD1	L	L1 max	M			
SSM04	4	10	27	8	M12x1	14	1	16,00
SSM06	6	12	29,5	8	M14x1	17	1	24,10
SSM08	8	14	32,5	8,5	M16x1	19	1	31,70
SSM10	10	17	36,8	9,5	M20x1	24	1	56,00
SSM12	12	20	39,8	11,5	M22x1	26	1	70,00
SSM14	14	24	42	17	M24x1	27	1	75,00

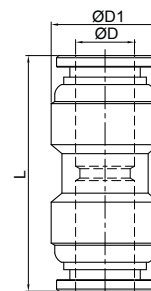


ART. **SSU**

Straight connector



COD.	ØD	ØD1	L		
SSU04	4	11	27	1	11,40
SSU06	6	13	29,5	1	15,40
SSU08	8	15	32,5	1	20,40
SSU10	10	18	36,8	1	33,00
SSU12	12	21	39,8	1	47,70
SSU14	14	22	42	1	46,00

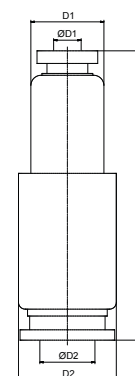


ART. **SSG**

Reducer straight connector



COD.	ØD1	ØD2	D1	D2	L1		
SSG04-06	4	6	10,5	12,5	30,6	1	14,00
SSG06-08	6	8	12,5	14,5	32,8	1	18,00
SSG08-10	8	10	14,5	17,5	35	1	26,00
SSG10-12	10	12	17,5	20,5	38,2	1	40,00

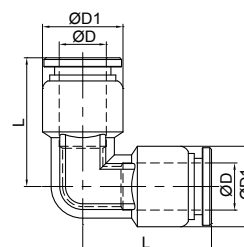


ART. **SSV**

Elbow connector



COD.	ØD	ØD1	L		
SSV04	4	10	18,3	1	16,00
SSV06	6	12	20,3	1	17,10
SSV08	8	14	22,3	1	23,20
SSV10	10	17	26,4	1	37,60
SSV12	12	20	29,4	1	56,00
SSV14	14	22	37	1	98,00

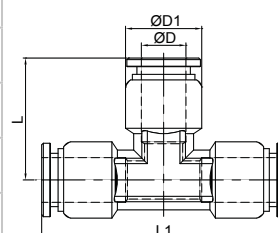


ART. **SSE**

T connector

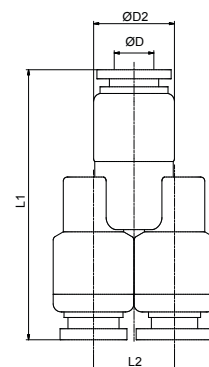


COD.	ØD	ØD1	L	L1		
SSE04	4	10	18,3	36,6	1	18,00
SSE06	6	12	20,3	40,6	1	23,70
SSE08	8	14	22,3	44,6	1	31,80
SSE10	10	17	26,4	52,8	1	53,50
SSE12	12	20	29,4	58,8	1	79,00
SSE14	14	14	37	74	1	80,00



ART. SSY
Y connector


COD.	ØD	L1	L2	ØD2		
SSY04	4	36	14	11	1	24,00
SSY06	6	37,5	16	13	1	34,00
SSY08	8	41,3	18	15	1	38,00
SSY10	10	44,3	21	18	1	56,00
SSY12	12	51	24	21	1	84,00


ART. SSP
Plug


COD.	D1	D2	L1		
SSP04	4	6	28	1	2,00
SSP06	6	8	33	1	4,00
SSP08	8	10	37	1	8,00
SSP10	10	12	42	1	14,00
SSP12	12	14	44	1	18,00
SSP14	14	16	46	1	32,00

