

Stainless steel standard fittings

Series RX-100



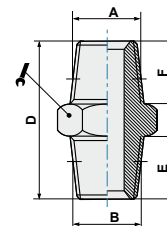
The stainless steel accessory fittings “RX” series are “oil free” and manufactured according to the ISO norms of reference as warranty of high quality and reliability.

Technical sheet

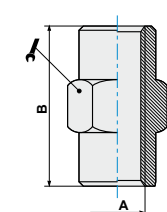
FLUIDS		Compressed air, some liquids (for different fluid please contact our Technical Dept.)
APPLICATIONS		Pneumatic equipments which are applied widely in the range of Industry such as food service industry, chemical industry and medical industry. In general where required to ensure anti-corrosion and acid resistant, or usage at high temperature.
RECOMMENDED LIMIT VALUES	TEMPERATURE	The working temperatures range is between -20°C and +120°C
	WORKING PRESSURES	Maximum value 25 bar
THREAD TYPE		BSP parallel UNI-ISO 228; BSP tapered UNI-ISO 7; Metric ISO/R 262
MATERIALS	Body	Stainless steel SUS316; O-Ring FKM
IMPORTANT NOTE		The raw material is non-magnetic, however after cold working, a small amount of austenite could be transformed into martensite, which could be very weakly magnetic.

ART. RX102
Taper nipple

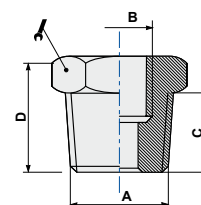

COD.	A	B	D	E	F			
RX1021818	G1/8	G1/8	21	7,5	7,5	14	1	8,00
RX1021814	G1/8	G1/4	23	7,5	9,5	14	1	12,00
RX1021414	G1/4	G1/4	25	9,5	9,5	17	1	16,00
RX1021438	G1/4	G3/8	25	9,5	10,5	17	1	22,00
RX1021412	G1/4	G1/2	26,5	13	9,5	24	1	30,00
RX1023838	G3/8	G3/8	26,5	10,5	10,5	21	1	24,00
RX1023812	G3/8	G1/2	29	10,5	13	24	1	38,00
RX1021212	G1/2	G1/2	31	13	13	21	1	38,00


ART. RX103
Sleeve

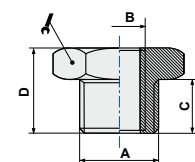

COD.	A	B			
RX10318	G1/8	17	14	1	10,00
RX10314	G1/4	23	17	1	18,00
RX10338	G3/8	25	21	1	28,00
RX10312	G1/2	28	24	1	30,00


ART. RX104
Taper M/F reducer

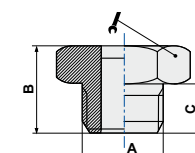

COD.	A	B	C	D			
RX1041418	G1/4	G1/8	10	16	17	1	8,00
RX1043818	G3/8	G1/8	11,5	18	17	1	18,00
RX1041218	G1/2	G1/8	12	18	21	1	36,00
RX1043814	G3/8	G1/4	11,5	18	21	1	12,00
RX1041214	G1/2	G1/4	12	18	24	1	28,00
RX1041238	G1/2	G3/8	12	18	24	1	18,00


ART. RX104Z
Parallel M/F reducer with O-Ring


COD.	A	B	C	D			
RX104Z18M5	G1/8	M5	5,5	12,5	14	1	8,00
RX104Z1418	G1/4	G1/8	6,5	13,5	17	1	12,00
RX104Z3814	G3/8	G1/4	7,5	14,5	21	1	18,00


ART. RX107Z
Parallel male plug with O-Ring


COD.	A	B	C			
RX107Z18	G1/8	12,5	5,5	14	1	8,00
RX107Z14	G1/4	13,5	6,5	17	1	16,00
RX107Z38	G3/8	14,5	7,5	21	1	24,00
RX107Z12	G1/2	16	9	24	1	38,00

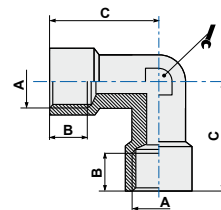


ART. **RX109**

F/F elbow



COD.	A	B	C			
RX10918	G1/8	9,5	22,5	11	1	24,00
RX10914	G1/4	11,5	25	13	1	36,00
RX10938	G3/8	12,5	28	15,6	1	54,00
RX10912	G1/2	15	31,5	20,6	1	90,00

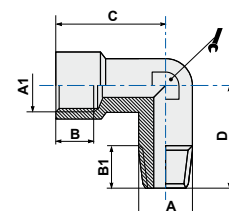


ART. **RX110**

M/F elbow



COD.	A	A1	B	B1	C	D			
RX11018	G1/8	G1/8	9,5	7,5	22,5	18,5	11	1	18,00
RX11014	G1/4	G1/4	11,5	10	25	22,5	13	1	32,00
RX11038	G3/8	G3/8	12,5	11,5	28	25	15,6	1	46,00
RX11012	G1/2	G1/2	15	12	31,5	29,5	20,6	1	88,00

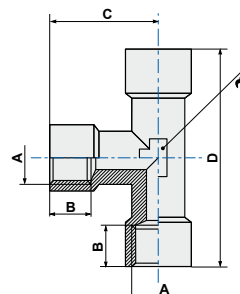


ART. **RX111**

F/F/F T



COD.	A	B	C	D			
RX11118	G1/8	7,5	7,5	18,5	11	1	32,00
RX11114	G1/4	10	25	50	13	1	52,00
RX11138	G3/8	11,5	27	58,5	15	1	78,00
RX11112	G1/2	12	31	67	20,6	1	120,00

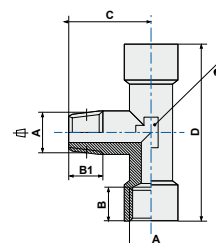


ART. **RX112**

F/M/F T



COD.	A	B	B1	C	D			
RX11218	G1/8	7,5	9,5	18,5	45	11	1	26,00
RX11214	G1/4	10	11,5	22,5	50	13	1	46,00
RX11238	G3/8	11,5	12,5	25	58,5	15,6	1	68,00
RX11212	G1/2	12	15	29,5	67	20,6	1	116,00



ART. **RX115**

M/M elbow



COD.	A	B	C	A1	B1			
RX11218	G1/8	7,5	17	8,5	7,5	9	1	10,00
RX11214	G1/4	10	21	10,5	10	11	1	32,00
RX11238	G3/8	11,5	23,5	12,5	10,5	13	1	32,00
RX11212	G1/2	13	26,7	15	13	15,6	1	54,00

