

Series PG - for compressed air and vacuum



The large flow valves and solenoid poppet valves for compressed air and vacuum.
Are manufactured for 3/2 and 2/2 versions only, either normally close and normally open.

Construction characteristics

	G 1/2" - 1/2" NPT	G 3/4" - 3/4" NPT	G 1" - 1" NPT	G 1 1/2" - 1 1/2" NPT
Body, operator and end cover			Aluminium	
Actuators rod			Steel	
Bottom plates			Aluminium	
Seals and poppets			NBR	
Springs			Stainless steel	
Pin guide			Stainless steel	
Pistons			Acetal resin	

Use and maintenance

These valves have a mean life of 10 to 15 million cycles under normal operating conditions.

Lubrication is not required for good operation but we recommend good filtration to avoid dirty deposit causing malfunction.

Please ensure that the valve is being used according with the manufacturers specification, such as air pressure and temperature.

The exhaust port of the distributor has to be protected in a dusty and dirty environment.

For these products, according to the construction technique and special application, is not required any maintenance with parts replacement.

When necessary it is sufficient to clean the internal parts.

When it is used the solenoid valves with internal pilot, either for air or vacuum, inlet flow rate must be equal or higher that the required consumption flow rate.

Otherwise is better choose the external pilot version.



Valves and solenoid valves poppet system
Series PG - for compressed air - G1/2" - 1/2" NPT

Pneumatic - Spring

Coding: **PC2AN11E00000**

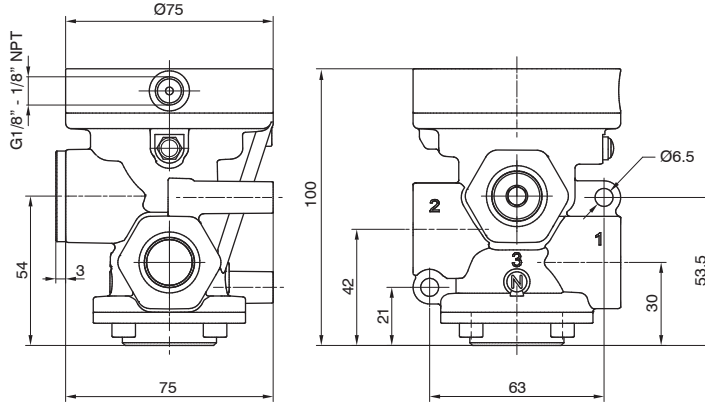
Operational characteristics	
Fluid	Filtered air. No lubrication needed, if applied it shall be continuous
Max. working pressure (bar)	10
Minimum pilot pressure (bar)	2,5
Temperature °C	-5 ... +70
Flow rate at 6 bar with Δp=1 (NI/min)	4800
Orifice size (mm)	15
Working ports size	G1/2" - 1/2" NPT
Pilot ports size	G1/8" - 1/8" NPT

CONNECTIONS	
C	G = Gas thread
	N = NPT thread
WAYS NUMBER	
N	2 = 2 ways, 2 positions
	3 = 3 ways, 2 positions
FUNCTION	
F	A = Normally Open (only for 3 ways)
	C = Normally Closed

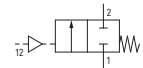
1

AIR DISTRIBUTION

2/2



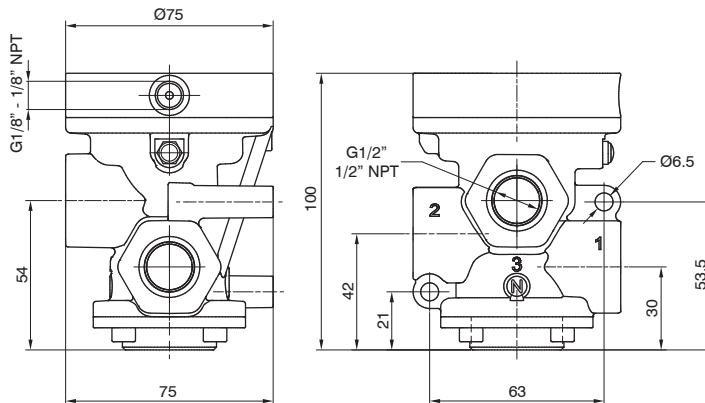
N.C.
 Inlet port 1
 Outlet port 2
 Exhaust port 3 (closed)



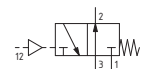
Weight 675 g

PC2A211E00000

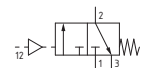
3/2



N.O.
 Inlet port 3
 Outlet port 2
 Exhaust port 1



N.C.
 Inlet port 1
 Outlet port 2
 Exhaust port 3



Weight 648,5 g

PC2A311E00000

Solenoid-Spring

Coding: **PG2AN01VFT**

Operational characteristics	
Fluid	Filtered air. No lubrication needed, if applied it shall be continuous
Max. working pressure (bar)	10
Minimum pilot pressure (bar)	2,5
Temperature °C	-5 ... +50
Flow rate at 6 bar with Δp=1 (Nl/min)	4800
Orifice size (mm)	15
Working ports size	G1/2" - 1/2" NPT
Pilot ports size	G1/8" - 1/8" NPT
Response time according to ISO 12238, activation time (ms)	21 (self feeding version)
Response time according to ISO 12238, deactivation time (ms)	83 (self feeding version)

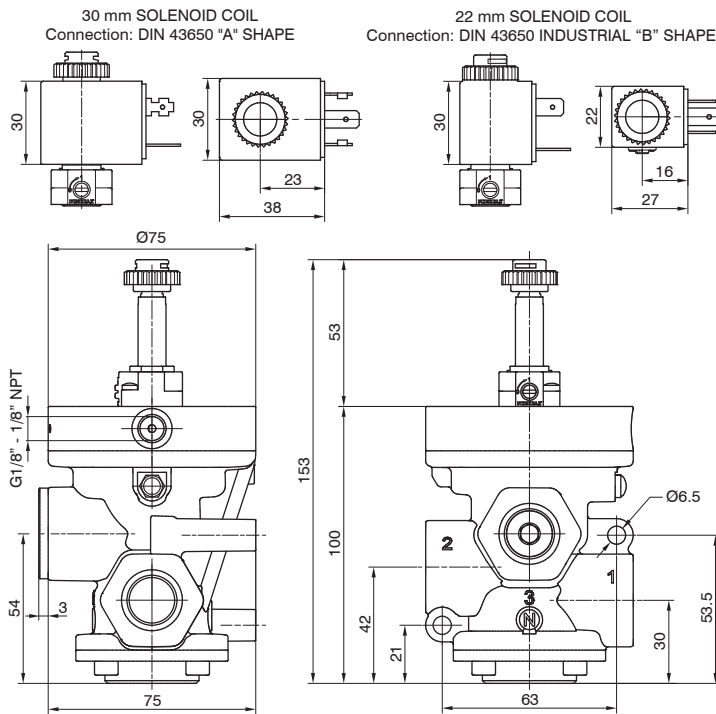
CONNECTIONS	
G	= Gas thread
N	= NPT thread
WAYS NUMBER	
2	= 2 ways, 2 positions
3	= 3 ways, 2 positions
VERSION	
V	= Self feeding
E	= External feeding
FUNCTION	
F	= Normally Open (only for 3 ways)
C	= Normally Closed
VOLTAGE (22 MM SOLENOID COIL)	
S40B0	= 12 VDC
S50B0	= 24 VDC
S60B0	= 24 V 50/60 Hz
S70B0	= 110 V 50/60 Hz
S80B0	= 230 V 50/60 Hz
10000	= Without solenoid coil
VOLTAGE (30 MM SOLENOID COIL)	
S40C0	= 12 VDC
S50C0	= 24 VDC
S60C0	= 24 V 50/60 Hz
S70C0	= 110 V 50/60 Hz
S80C0	= 230 V 50/60 Hz
10000	= Without solenoid coil

2/2



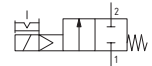
Weight 720,5 g

PG2A201VFT



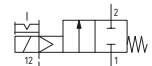
Self feeding - N.C.

Inlet port 1
Outlet port 2
Exhaust port 3 (closed)



External feeding - N.C.

Inlet port 1
Outlet port 2
Exhaust port 3 (closed)

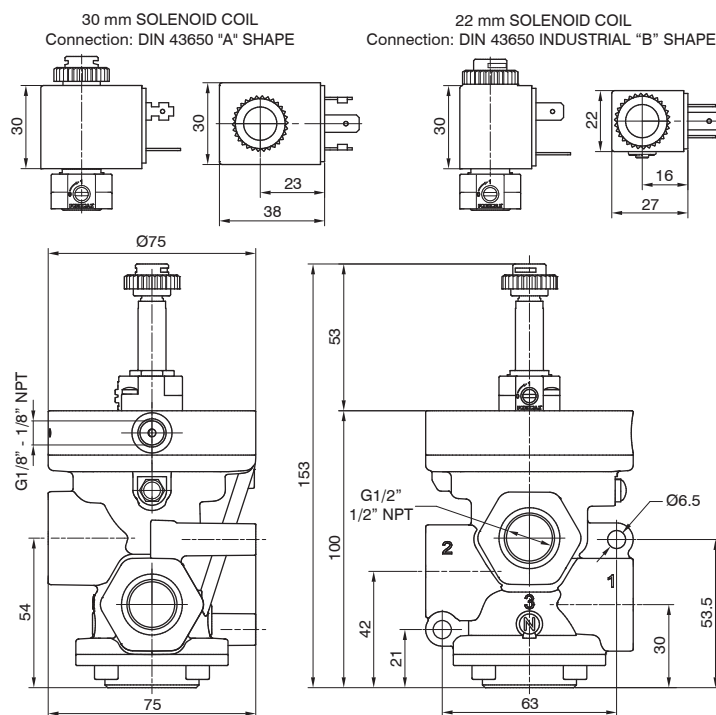


3/2



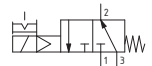
Weight 693,5 g

PG2A301VFT



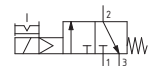
Self feeding - N.O.

Inlet port 3
Outlet port 2
Exhaust port 1



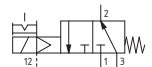
Self feeding - N.C.

Inlet port 1
Outlet port 2
Exhaust port 3



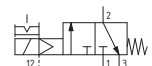
External feeding - N.O.

Inlet port 3
Outlet port 2
Exhaust port 1



External feeding - N.C.

Inlet port 1
Outlet port 2
Exhaust port 3





Valves and solenoid valves poppet system

Series PG - for Vacuum - G1/2" - 1/2" NPT

Pneumatic - Spring

Coding: **PC2VN11E**00000

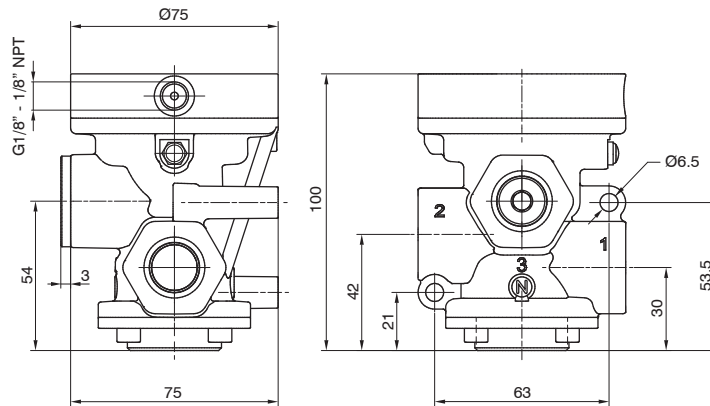
Operational characteristics	
Fluid	Vacuum
Minimum pilot pressure (bar)	2
Temperature °C	-5 ... +70
Orifice size (mm)	15
Working ports size	G1/2" - 1/2" NPT
Pilot ports size	G1/8" - 1/8" NPT
Max. vacuum (mmHg)	758,5

C	CONNECTIONS
	G = Gas thread
	N = NPT thread
N	WAYS NUMBER
	2 = 2 ways, 2 positions
	3 = 3 ways, 2 positions
F	FUNCTION
	A = Normally Open (only for 3 ways)
	C = Normally Closed

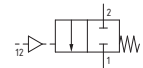
1

2/2

AIR DISTRIBUTION



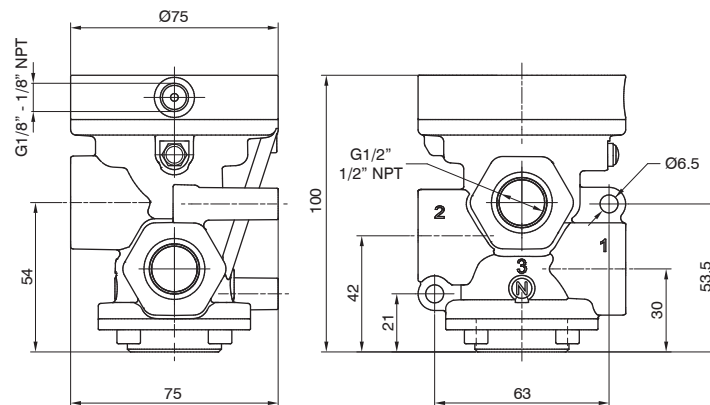
N.C.
Pump 1
Outlet port 2
Exhaust port 3 (closed)



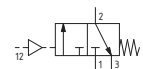
Weight 675,5 g

PC2V211E00000

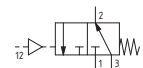
3/2



N.O.
Pump 3
Outlet port 2
Exhaust port 1



N.C.
Pump 1
Outlet port 2
Exhaust port 3



Weight 648,5 g

PC2V311E00000

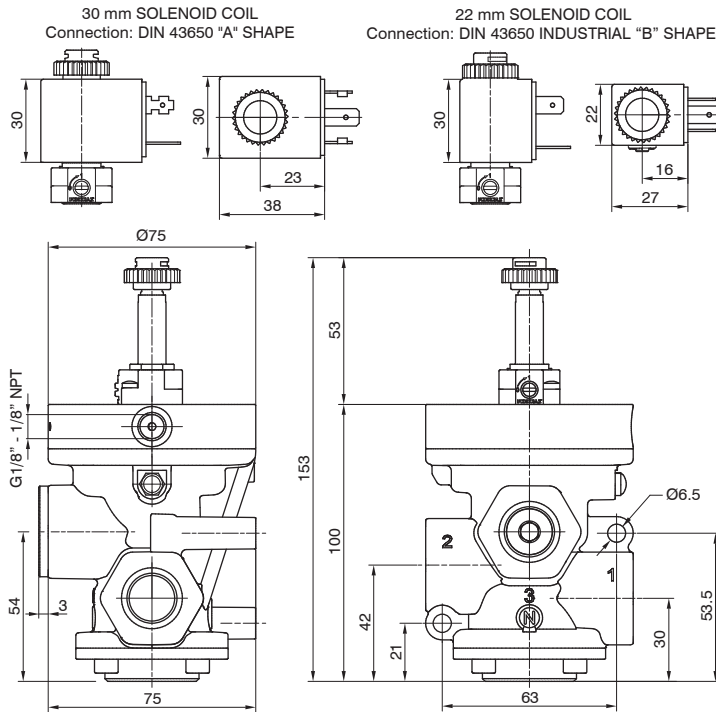
Solenoid-Spring

Coding: **PG2VN01VFT**

Operational characteristics	
Fluid	Vacuum
Minimum pilot pressure (bar)	2 (external feeding version)
Temperature °C	-5 ... +50
Orifice size (mm)	15
Working ports size	G1/2" - 1/2" NPT
Pilot ports size	G1/8" - G1/8" NPT
Max. vacuum (mmHg)	758,5
Minimum operating vacuum (mmHg)	250 (self feeding version)

CONNECTIONS	
G	= Gas thread
N	= NPT thread
WAYS NUMBER	
2	= 2 ways, 2 positions
3	= 3 ways, 2 positions
VERSION	
V	= Self feeding
E	= External feeding
FUNCTION	
F	= Normally Open (only for 3 ways)
C	= Normally Closed
VOLTAGE (22 MM SOLENOID COIL)	
S40B0	= 12 VDC
S50B0	= 24 VDC
S60B0	= 24 V 50/60 Hz
S70B0	= 110 V 50/60 Hz
S80B0	= 230 V 50/60 Hz
10000	= Without solenoid coil
VOLTAGE (30 MM SOLENOID COIL)	
S40C0	= 12 VDC
S50C0	= 24 VDC
S60C0	= 24 V 50/60 Hz
S70C0	= 110 V 50/60 Hz
S80C0	= 230 V 50/60 Hz
10000	= Without solenoid coil

2/2

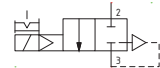


Weight 720,5 g

PG2V201VFT

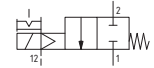
Self feeding - N.C.

Pump 3
Outlet port 2
Exhaust port 1 (closed)

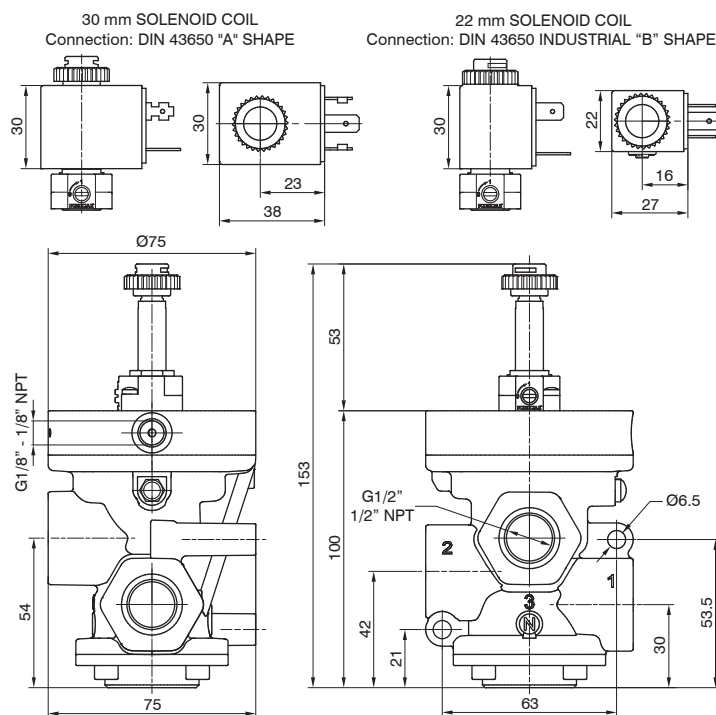


External feeding - N.C.

Pump 1
Outlet port 2
Exhaust port 3 (closed)



3/2

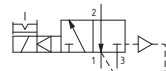


Weight 693,5 g

PG2V301VFT

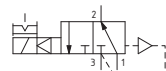
Self feeding - N.O.

Pump 1
Outlet port 2
Exhaust port 3



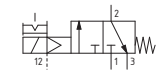
Self feeding - N.C.

Pump 3
Outlet port 2
Exhaust port 1



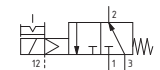
External feeding - N.O.

Pump 3
Outlet port 2
Exhaust port 1



External feeding - N.C.

Pump 1
Outlet port 2
Exhaust port 3





Pneumatic - Spring

Coding: **PC3AN11E**00000

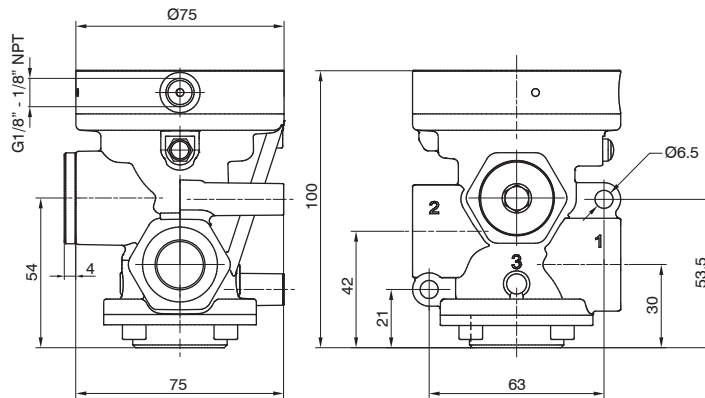
Operational characteristics	
Fluid	Filtered air. No lubrication needed, if applied it shall be continuous
Max. working pressure (bar)	10
Minimum pilot pressure (bar)	2,5
Temperature °C	-5 ... +70
Flow rate at 6 bar with Δp=1 (NI/min)	6100
Orifice size (mm)	20
Working ports size	G3/4" - 3/4" NPT
Pilot ports size	G1/8" - 1/8" NPT

CONNECTIONS	
C	G = Gas thread
	N = NPT thread
WAYS NUMBER	
N	2 = 2 ways, 2 positions
	3 = 3 ways, 2 positions
FUNCTION	
F	A = Normally Open (only for 3 ways)
	C = Normally Closed

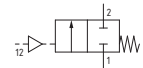
1

2/2

AIR DISTRIBUTION

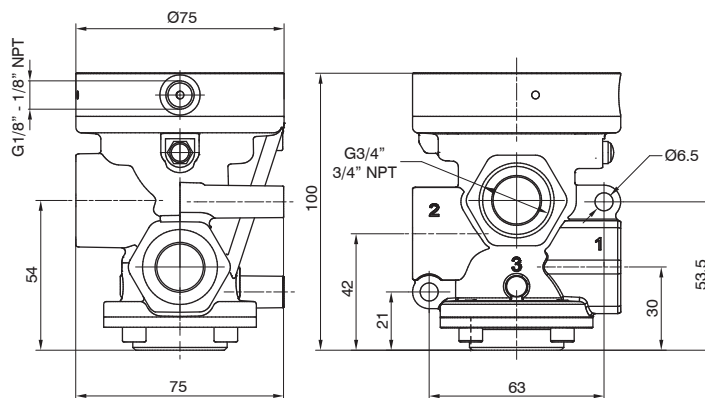


N.C.
 Inlet port 1
 Outlet port 2
 Exhaust port 3 (closed)

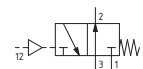


Weight 576,5 g

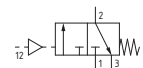
PC3A211E00000



N.O.
 Inlet port 3
 Outlet port 2
 Exhaust port 1



N.C.
 Inlet port 1
 Outlet port 2
 Exhaust port 3



Weight 522,5 g

PC3A311E00000

Solenoid-Spring

Coding: **PG3AN01VFT**

Operational characteristics	
Fluid	Filtered air. No lubrication needed, if applied it shall be continuous
Max. working pressure (bar)	10
Minimum pilot pressure (bar)	2,5
Temperature °C	-5 ... +50
Flow rate at 6 bar with Δp=1 (NI/min)	6100
Orifice size (mm)	20
Working ports size	G3/4" - 3/4" NPT
Pilot ports size	G1/8" - 1/8" NPT
Response time according to ISO 12238, activation time (ms)	22 (self feeding version)
Response time according to ISO 12238, deactivation time (ms)	81 (self feeding version)

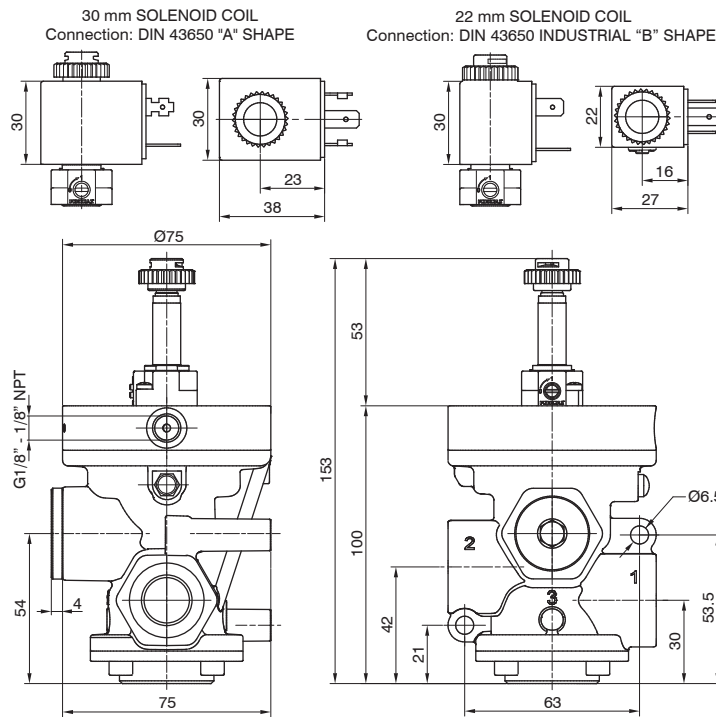
CONNECTIONS	
G	= Gas thread
N	= NPT thread
WAYS NUMBER	
2	= 2 ways, 2 positions
3	= 3 ways, 2 positions
VERSION	
V	= Self feeding
E	= External feeding
FUNCTION	
F	= Normally Open (only for 3 ways)
C	= Normally Closed
VOLTAGE (22 MM SOLENOID COIL)	
S40B0	= 12 VDC
S50B0	= 24 VDC
S60B0	= 24 V 50/60 Hz
S70B0	= 110 V 50/60 Hz
S80B0	= 230 V 50/60 Hz
10000	= Without solenoid coil
VOLTAGE (30 MM SOLENOID COIL)	
S40C0	= 12 VDC
S50C0	= 24 VDC
S60C0	= 24 V 50/60 Hz
S70C0	= 110 V 50/60 Hz
S80C0	= 230 V 50/60 Hz
10000	= Without solenoid coil

2/2



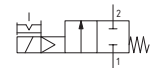
Weight 621,5 g

PG3A201VFT



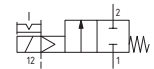
Self feeding - N.C.

Inlet port 1
Outlet port 2
Exhaust port 3 (closed)



External feeding - N.C.

Inlet port 1
Outlet port 2
Exhaust port 3 (closed)

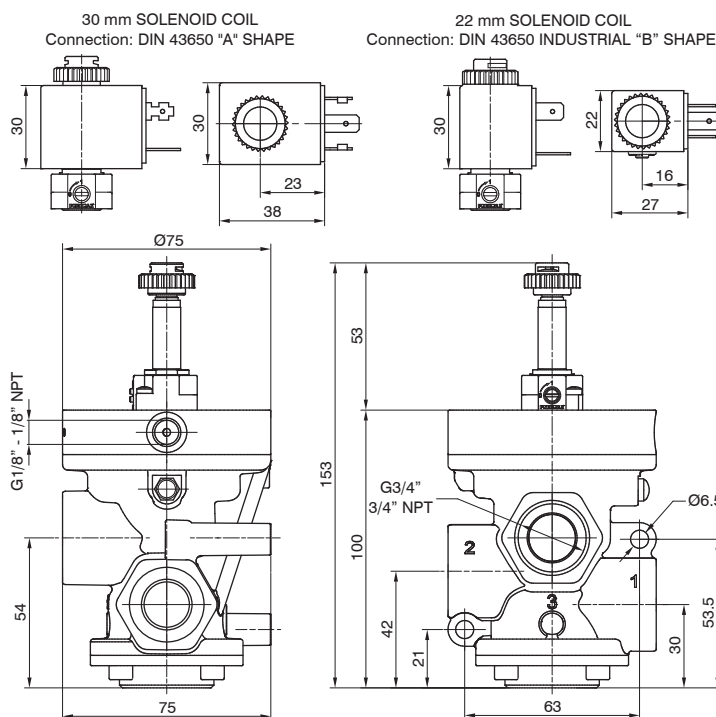


3/2



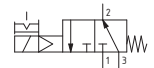
Weight 567,5 g

PG3A301VFT



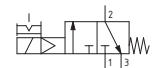
Self feeding - N.O.

Inlet port 3
Outlet port 2
Exhaust port 1



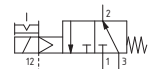
Self feeding - N.C.

Inlet port 1
Outlet port 2
Exhaust port 3



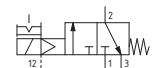
External feeding - N.O.

Inlet port 3
Outlet port 2
Exhaust port 1



External feeding - N.C.

Inlet port 1
Outlet port 2
Exhaust port 3





Valves and solenoid valves poppet system
Series PG - for Vacuum - G3/4" - 3/4" NPT

Pneumatic - Spring

Coding: **PC3VN11E00000**

Operational characteristics

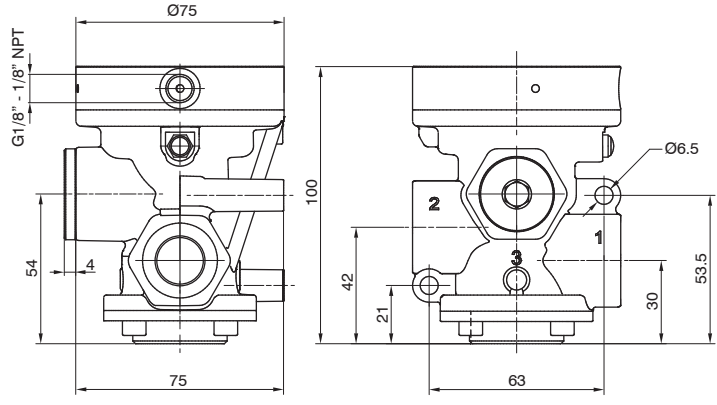
Fluid	Vacuum
Minimum pilot pressure (bar)	2
Temperature °C	-5 ... +70
Orifice size (mm)	20
Working ports size	G3/4" - 3/4" NPT
Pilot ports size	G1/8" - 1/8" NPT
Max. vacuum (mmHg)	758,5

C	CONNECTIONS
	G = Gas thread N = NPT thread
N	WAYS NUMBER
	2 = 2 ways, 2 positions 3 = 3 ways, 2 positions
F	FUNCTION
	A = Normally Open (only for 3 ways)
	C = Normally Closed

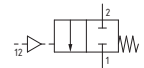
1

AIR DISTRIBUTION

2/2



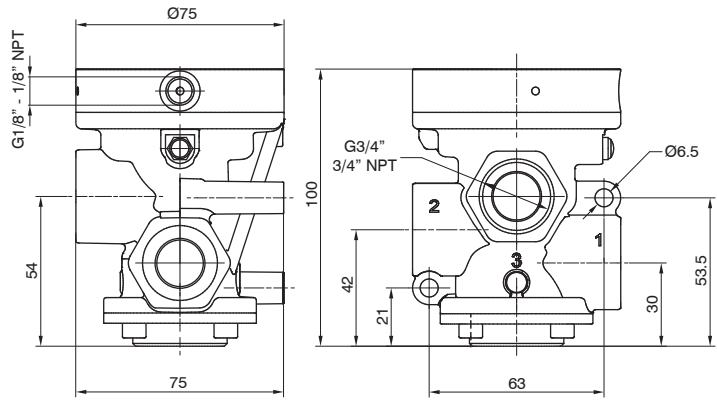
N.C.
 Pump 1
 Outlet port 2
 Exhaust port 3 (closed)



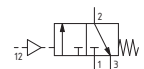
Weight 576,5 g

PC3V211E00000

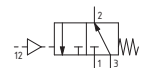
3/2



N.O.
 Pump 3
 Outlet port 2
 Exhaust port 1



N.C.
 Pump 1
 Outlet port 2
 Exhaust port 3



Weight 522,5 g

PC3V311E00000

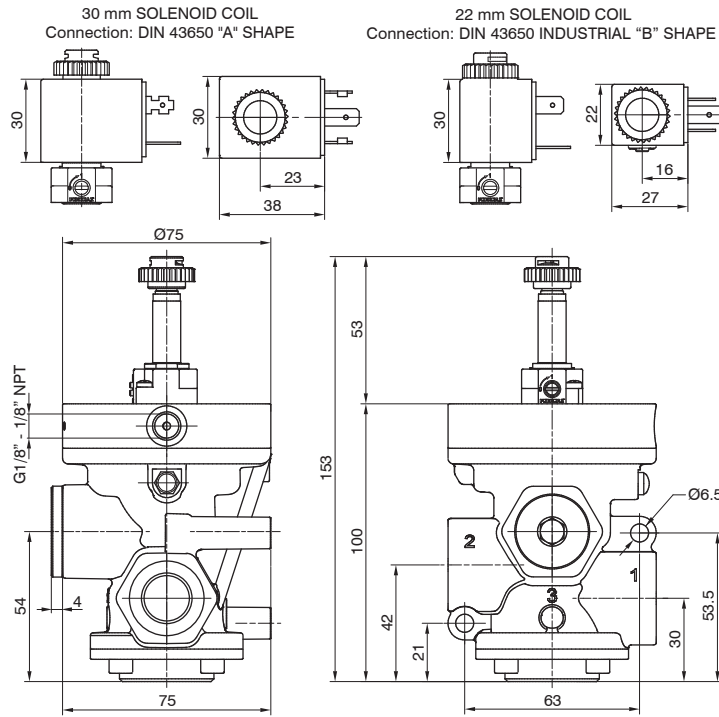
Solenoid-Spring

Coding: P03VN01VFT

Operational characteristics	
Fluid	Vacuum
Minimum pilot pressure (bar)	2 (external feeding version)
Temperature °C	-5 ... +50
Orifice size (mm)	20
Working ports size	G3/4" - 3/4" NPT
Pilot ports size	G1/8" - 1/8" NPT
Max. vacuum (mmHg)	758,5
Minimum operating vacuum (mmHg)	250 (self feeding version)

CONNECTIONS	
G	= Gas thread
N	= NPT thread
WAYS NUMBER	
N	2 = 2 ways, 2 positions
3	= 3 ways, 2 positions
VERSION	
V	A = Self feeding
E	= External feeding
FUNCTION	
F	A = Normally Open (only for 3 ways)
C	= Normally Closed
VOLTAGE (22 MM SOLENOID COIL)	
S40B0	= 12 VDC
S50B0	= 24 VDC
S60B0	= 24 V 50/60 Hz
S70B0	= 110 V 50/60 Hz
S80B0	= 230 V 50/60 Hz
10000	= Without solenoid coil
VOLTAGE (30 MM SOLENOID COIL)	
S40C0	= 12 VDC
S50C0	= 24 VDC
S60C0	= 24 V 50/60 Hz
S70C0	= 110 V 50/60 Hz
S80C0	= 230 V 50/60 Hz
10000	= Without solenoid coil

2/2

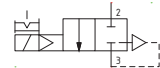


Weight 621,5 g

P03V201VFT

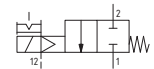
Self feeding - N.C.

Pump 3
Outlet port 2
Exhaust port 1 (closed)

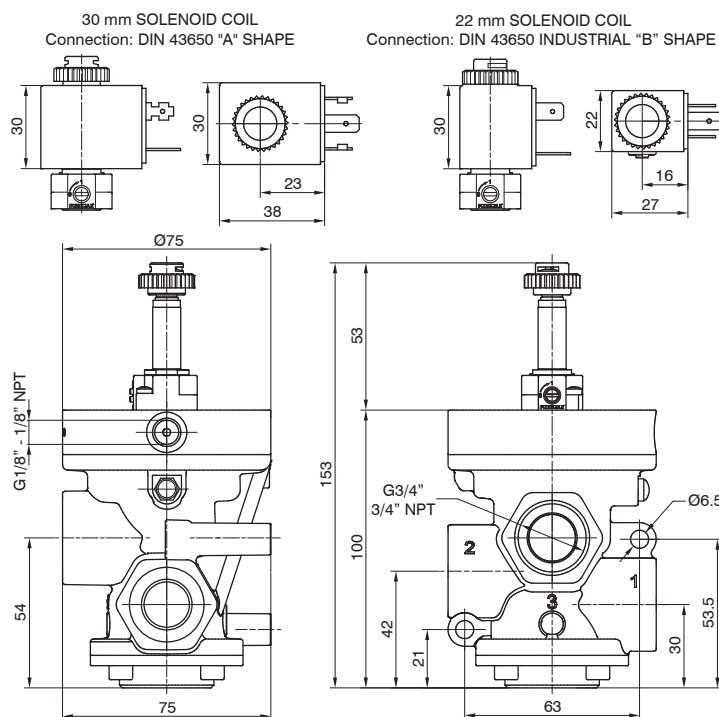


External feeding - N.C.

Pump 1
Outlet port 2
Exhaust port 3 (closed)



3/2

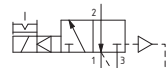


Weight 567,5 g

P03V301VFT

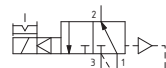
Self feeding - N.O.

Pump 1
Outlet port 2
Exhaust port 3



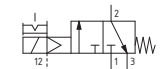
Self feeding - N.C.

Pump 3
Outlet port 2
Exhaust port 1



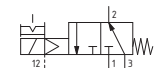
External feeding - N.O.

Pump 3
Outlet port 2
Exhaust port 1



External feeding - N.C.

Pump 1
Outlet port 2
Exhaust port 3





Pneumatic - Spring

Coding: **PC1AN11E**00000

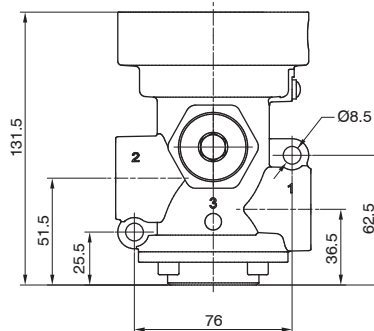
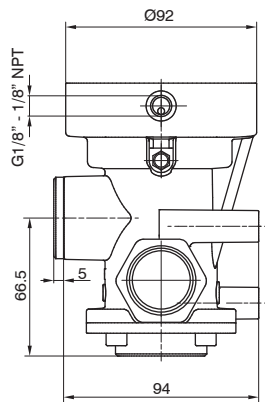
Operational characteristics	
Fluid	Filtered air. No lubrication needed, if applied it shall be continuous
Max. working pressure (bar)	10
Minimum pilot pressure (bar)	2,5
Temperature °C	-5 ... +70
Flow rate at 6 bar with Δp=1 (NI/min)	12500
Orifice size (mm)	25
Working ports size	G1" - 1" NPT
Pilot ports size	G1/8" - 1/8" NPT

CONNECTIONS	
C	G = Gas thread N = NPT thread
WAYS NUMBER	
N	2 = 2 ways, 2 positions 3 = 3 ways, 2 positions
FUNCTION	
F	A = Normally Open (only for 3 ways) C = Normally Closed

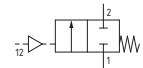
1

2/2

AIR DISTRIBUTION



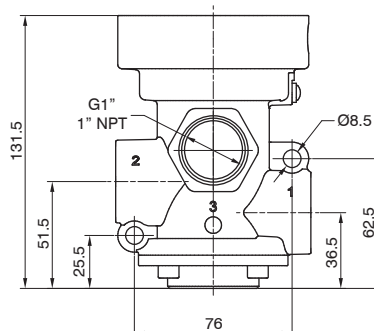
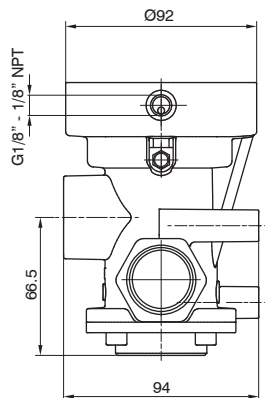
N.C.
 Inlet port 1
 Outlet port 2
 Exhaust port 3 (closed)



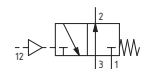
Weight 1231,5 g

PC1A211E00000

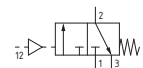
3/2



N.O.
 Inlet port 3
 Outlet port 2
 Exhaust port 1



N.C.
 Inlet port 1
 Outlet port 2
 Exhaust port 3



Weight 1139,5 g

PC1A311E00000

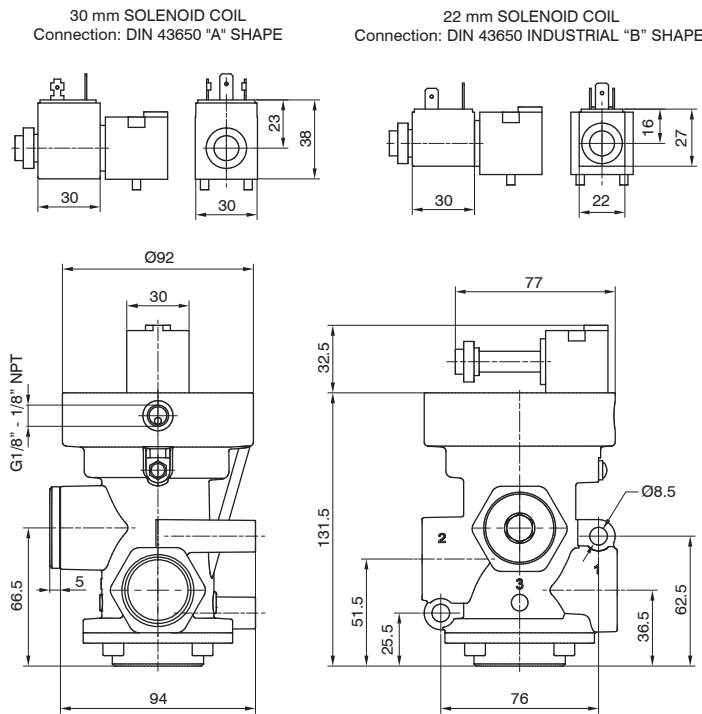
Solenoid-Spring

Coding: **PG1AN01VFT**

Operational characteristics	
Fluid	Filtered air. No lubrication needed, if applied it shall be continuous
Max. working pressure (bar)	10
Minimum pilot pressure (bar)	2,5
Temperature °C	-5 ... +50
Flow rate at 6 bar with Δp = 1 (NI/min)	12500
Orifice size (mm)	25
Working ports size	G1" - 1" NPT
Pilot ports size	G1/8" - 1/8" NPT
Response time according to ISO 12238, activation time (ms)	27 (self feeding version)
Response time according to ISO 12238, deactivation time (ms)	88 (self feeding version)

CONNECTIONS	
G	= Gas thread
N	= NPT thread
WAYS NUMBER	
2	= 2 ways, 2 positions
3	= 3 ways, 2 positions
VERSION	
V	= Self feeding
E	= External feeding
FUNCTION	
F	= Normally Open (only for 3 ways)
C	= Normally Closed
VOLTAGE (22 MM SOLENOID COIL)	
S40B0	= 12 VDC
S50B0	= 24 VDC
S60B0	= 24 V 50/60 Hz
S70B0	= 110 V 50/60 Hz
S80B0	= 230 V 50/60 Hz
10000	= Without solenoid coil
VOLTAGE (30 MM SOLENOID COIL)	
S40C0	= 12 VDC
S50C0	= 24 VDC
S60C0	= 24 V 50/60 Hz
S70C0	= 110 V 50/60 Hz
S80C0	= 230 V 50/60 Hz
10000	= Without solenoid coil

2/2



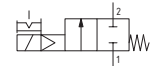
Weight 1290 g

PG1A201VFT

3/2

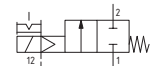
Self feeding - N.C.

Inlet port 1
Outlet port 2
Exhaust port 3 (closed)



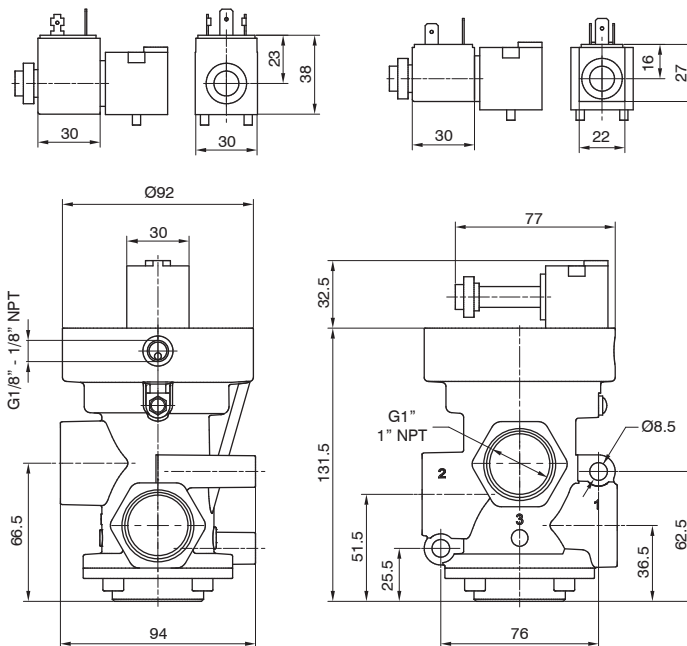
External feeding - N.C.

Inlet port 1
Outlet port 2
Exhaust port 3 (closed)



30 mm SOLENOID COIL
Connection: DIN 43650 "A" SHAPE

22 mm SOLENOID COIL
Connection: DIN 43650 INDUSTRIAL "B" SHAPE

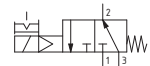


Weight 1198 g

PG1A301VFT

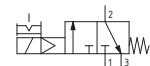
Self feeding - N.O.

Inlet port 3
Outlet port 2
Exhaust port 1



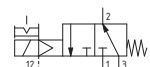
Self feeding - N.C.

Inlet port 1
Outlet port 2
Exhaust port 3



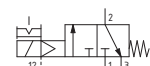
External feeding - N.O.

Inlet port 3
Outlet port 2
Exhaust port 1



External feeding - N.C.

Inlet port 1
Outlet port 2
Exhaust port 3





Pneumatic - Spring

Coding: **PC1VN11E**00000

Operational characteristics

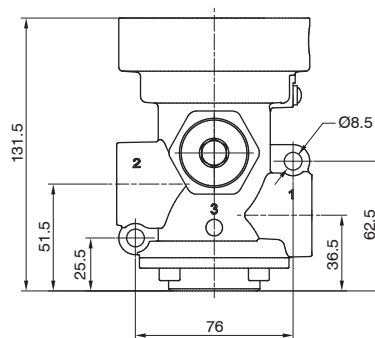
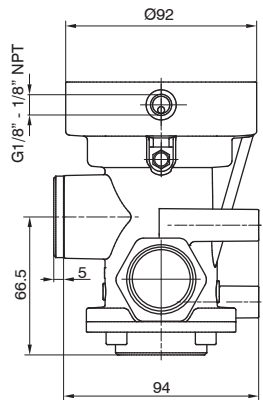
Fluid	Vacuum
Minimum pilot pressure (bar)	2
Temperature °C	-5 ... +70
Orifice size (mm)	25
Working ports size	G1" - 1" NPT
Pilot ports size	G1/8" - 1/8" NPT
Max. vacuum (mmHg)	758,5

CONNECTIONS	
C	G = Gas thread
	N = NPT thread
WAYS NUMBER	
N	2 = 2 ways, 2 positions
	3 = 3 ways, 2 positions
FUNCTION	
F	A = Normally Open (only for 3 ways)
	C = Normally Closed

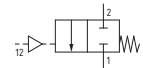
1

AIR DISTRIBUTION

2/2



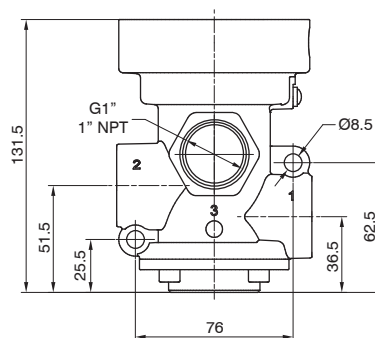
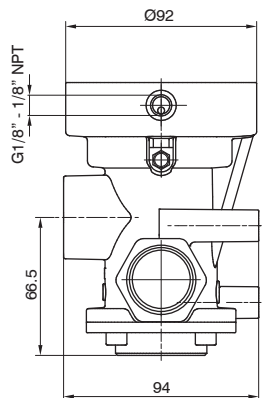
N.C.
Pump 1
Outlet port 2
Exhaust port 3 (closed)



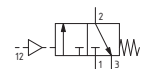
Weight 1231,5 g

PC1V211E00000

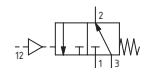
3/2



N.O.
Pump 3
Outlet port 2
Exhaust port 1



N.C.
Pump 1
Outlet port 2
Exhaust port 3



Weight 1139,5 g

PC1V311E00000

Solenoid-Spring

Coding: **PG1VN01VFT**

Operational characteristics	
Fluid	Vacuum
Minimum pilot pressure (bar)	2 (external feeding version)
Temperature °C	-5 ... +50
Orifice size (mm)	25
Working ports size	G1" - 1" NPT
Pilot ports size	G1/8" - 1/8" NPT
Max. vacuum (mmHg)	758,5
Minimum operating vacuum (mmHg)	250 (self feeding version)

CONNECTIONS	
G	= Gas thread
N	= NPT thread
WAYS NUMBER	
2	= 2 ways, 2 positions
3	= 3 ways, 2 positions
VERSION	
A	= Self feeding
E	= External feeding
FUNCTION	
F	= Normally Open (only for 3 ways)
C	= Normally Closed
VOLTAGE (22 MM SOLENOID COIL)	
S40B0	= 12 VDC
S50B0	= 24 VDC
S60B0	= 24 V 50/60 Hz
S70B0	= 110 V 50/60 Hz
S80B0	= 230 V 50/60 Hz
10000	= Without solenoid coil
VOLTAGE (30 MM SOLENOID COIL)	
S40C0	= 12 VDC
S50C0	= 24 VDC
S60C0	= 24 V 50/60 Hz
S70C0	= 110 V 50/60 Hz
S80C0	= 230 V 50/60 Hz
10000	= Without solenoid coil

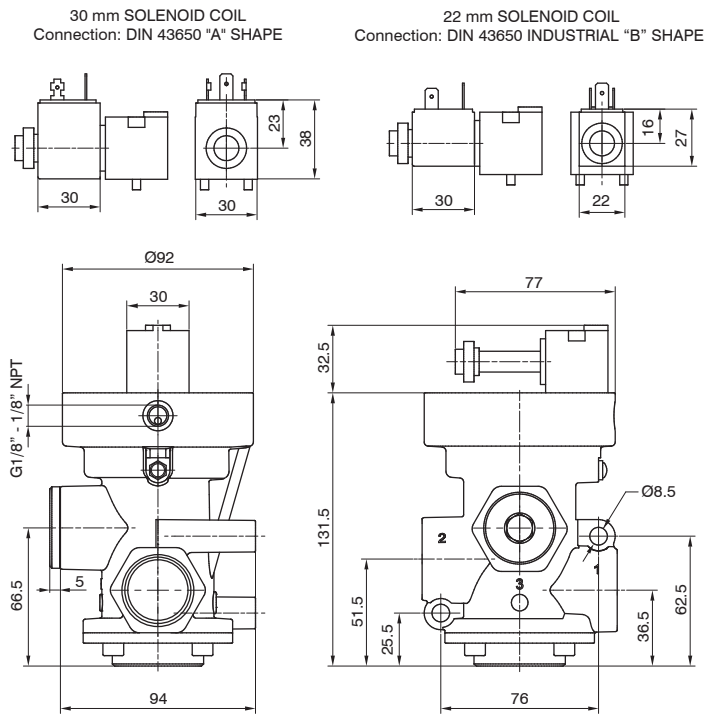
2/2

1
AIR DISTRIBUTION



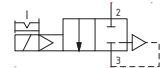
Weight 1290 g

PG1V201VFT



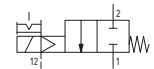
Self feeding - N.C.

Pump 3
Outlet port 2
Exhaust port 1 (closed)



External feeding - N.C.

Pump 1
Outlet port 2
Exhaust port 3 (closed)

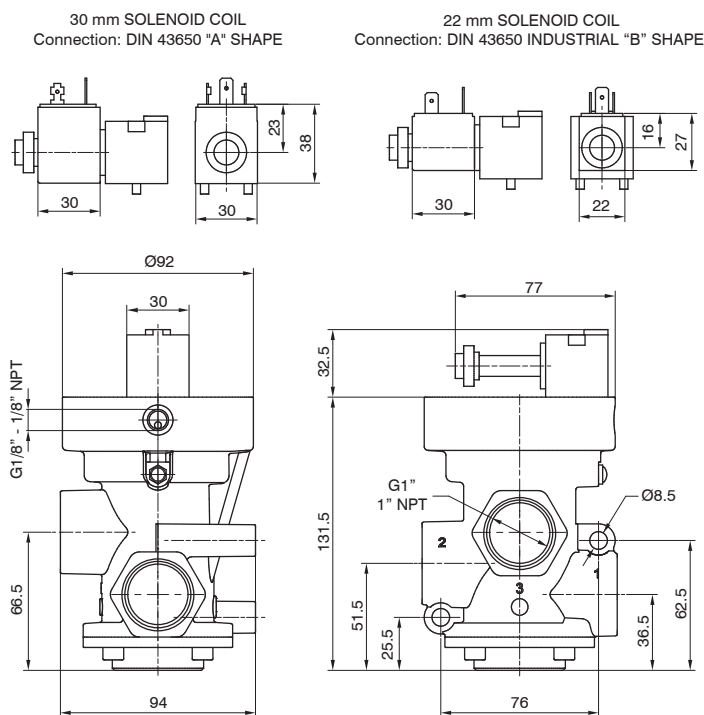


3/2



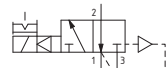
Weight 1198 g

PG1V301VFT



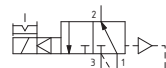
Self feeding - N.O.

Pump 1
Outlet port 2
Exhaust port 3



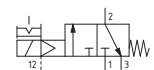
Self feeding - N.C.

Pump 3
Outlet port 2
Exhaust port 1



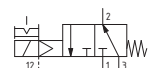
External feeding - N.O.

Pump 3
Outlet port 2
Exhaust port 1



External feeding - N.C.

Pump 1
Outlet port 2
Exhaust port 3





Valves and solenoid valves poppet system
Series PG - for compressed air - G1 1/2" - 1 1/2" NPT

Pneumatic - Spring

Coding: **PC6AN11E00000**

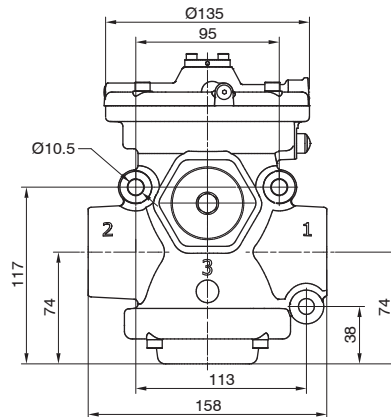
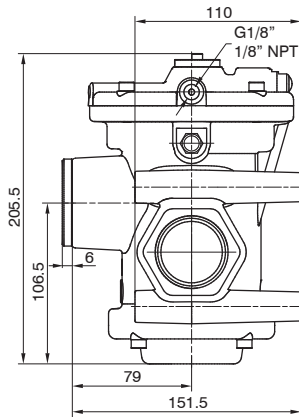
Operational characteristics

Fluid	Filtered air. No lubrication needed, if applied it shall be continuous
Max. working pressure (bar)	10
Minimum pilot pressure (bar)	3
Temperature °C	-5 ... +70
Flow rate at 6 bar with Δp=1 (NI/min)	33500
Orifice size (mm)	38
Working ports size	G1 1/2" - 1 1/2" NPT
Pilot ports size	G1/8" - 1/8" NPT

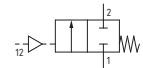
CONNECTIONS	
C	G = Gas thread
	N = NPT thread
WAYS NUMBER	
N	2 = 2 ways, 2 positions
	3 = 3 ways, 2 positions
FUNCTION	
F	A = Normally Open (only for 3 ways)
	C = Normally Closed

1
AIR DISTRIBUTION

2/2



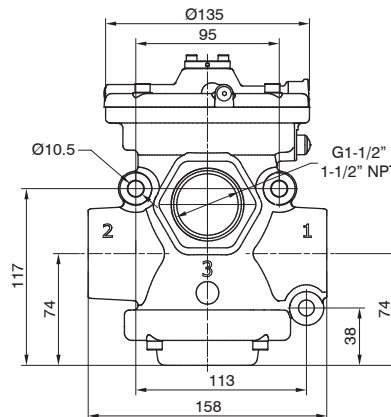
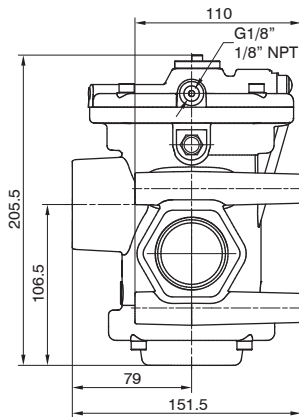
N.C.
 Inlet port 1
 Outlet port 2
 Exhaust port 3 (closed)



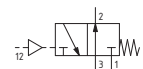
Weight 3417 g

PC6A211E00000

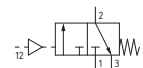
3/2



N.O.
 Inlet port 3
 Outlet port 2
 Exhaust port 1



N.C.
 Inlet port 1
 Outlet port 2
 Exhaust port 3



Weight 3168 g

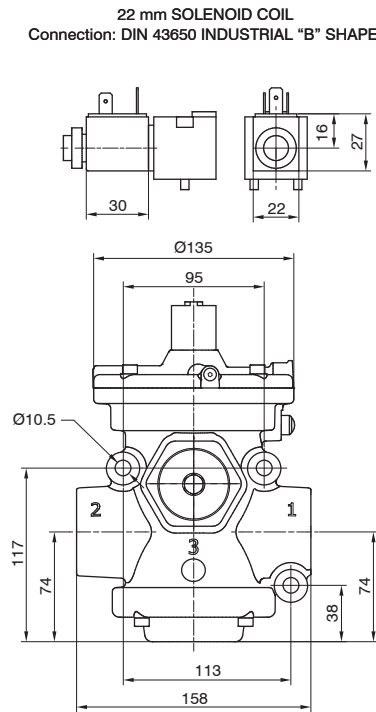
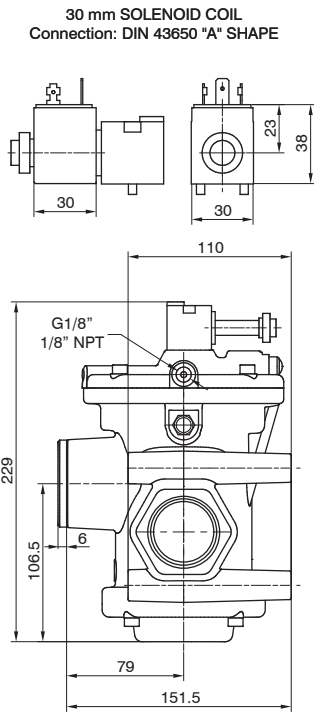
PC6A311E00000

Solenoid-Spring

Coding: P06AN01VFT

Operational characteristics	
Fluid	Filtered air. No lubrication needed, if applied it shall be continuous
Max. working pressure (bar)	10
Minimum pilot pressure (bar)	3
Temperature °C	-5 ... +50
Flow rate at 6 bar with Δp=1 (NI/min)	33500
Orifice size (mm)	38
Working ports size	G1 1/2" - 1 1/2" NPT
Pilot ports size	G1/8" - 1/8" NPT
Response time according to ISO 12238, activation time (ms)	182 (self feeding version)
Response time according to ISO 12238, deactivation time (ms)	78 (self feeding version)

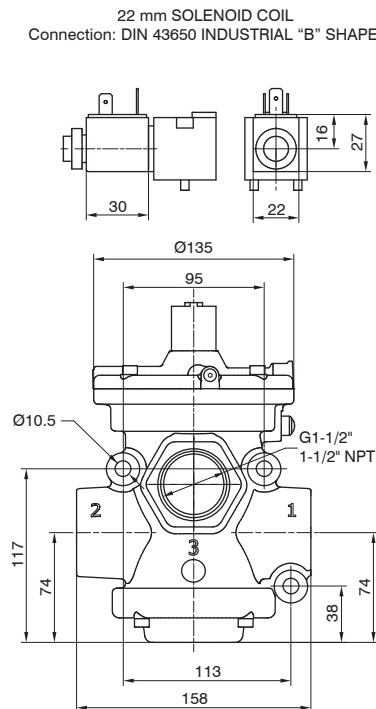
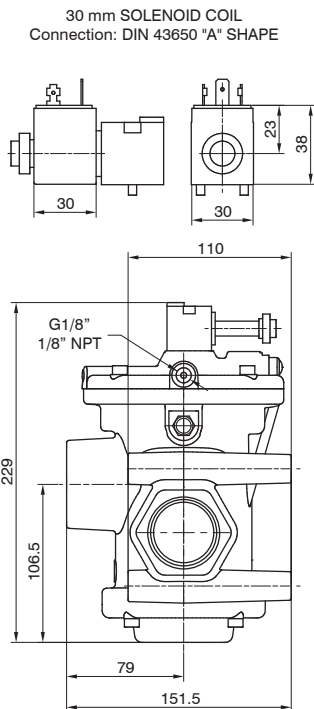
2/2



Weight 3491,5 g

P06A201VFT

3/2



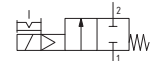
Weight 3242,5 g

P06A301VFT

CONNECTIONS	
G	Gas thread
N	NPT thread
WAYS NUMBER	
N	2 = 2 ways, 2 positions
3	3 = 3 ways, 2 positions
VERSION	
V	A = Self feeding
E	External feeding
FUNCTION	
F	A = Normally Open (only for 3 ways)
C	Normally Closed
VOLTAGE (22 MM SOLENOID COIL)	
S40B0	= 12 VDC
S50B0	= 24 VDC
S60B0	= 24 V 50/60 Hz
S70B0	= 110 V 50/60 Hz
S80B0	= 230 V 50/60 Hz
10000	= Without solenoid coil
VOLTAGE (30 MM SOLENOID COIL)	
S40C0	= 12 VDC
S50C0	= 24 VDC
S60C0	= 24 V 50/60 Hz
S70C0	= 110 V 50/60 Hz
S80C0	= 230 V 50/60 Hz
10000	= Without solenoid coil

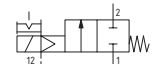
Self feeding - N.C.

Inlet port 1
Outlet port 2
Exhaust port 3 (closed)



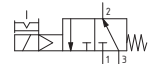
External feeding - N.C.

Inlet port 1
Outlet port 2
Exhaust port 3 (closed)



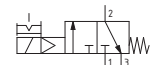
Self feeding - N.O.

Inlet port 3
Outlet port 2
Exhaust port 1



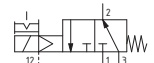
Self feeding - N.C.

Inlet port 1
Outlet port 2
Exhaust port 3



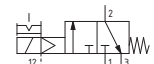
External feeding - N.O.

Inlet port 3
Outlet port 2
Exhaust port 1



External feeding - N.C.

Inlet port 1
Outlet port 2
Exhaust port 3





Valves and solenoid valves poppet system
Series PG - for Vacuum - G1 1/2" - 1 1/2" NPT

Pneumatic - Spring

Coding: **PC6VN11E00000**

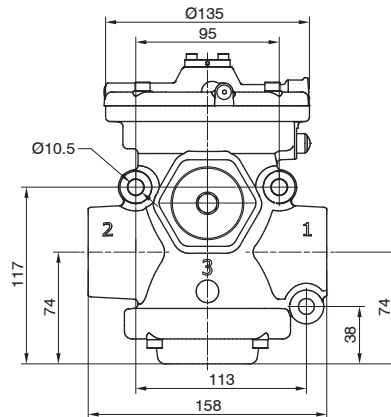
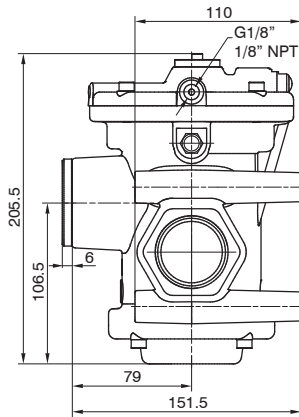
Operational characteristics

Fluid	Vacuum
Minimum pilot pressure (bar)	2
Temperature °C	-5 ... +70
Orifice size (mm)	38
Working ports size	G1 1/2" - 1 1/2" NPT
Pilot ports size	G1/8" - 1/8" NPT
Max. vacuum (mmHg)	758,5

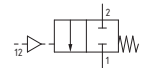
C	CONNECTIONS
	G = Gas thread
	N = NPT thread
N	WAYS NUMBER
	2 = 2 ways, 2 positions
	3 = 3 ways, 2 positions
F	FUNCTION
	A = Normally Open (only for 3 ways)
	C = Normally Closed

1
AIR DISTRIBUTION

2/2



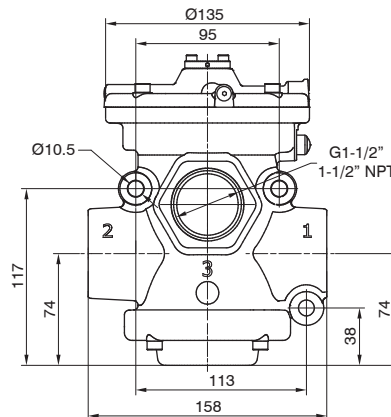
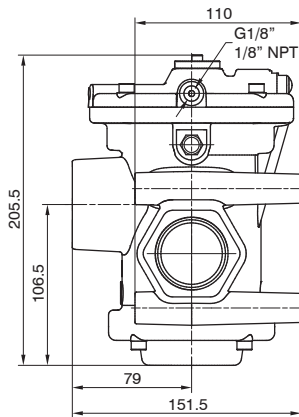
N.C.
 Pump 1
 Outlet port 2
 Exhaust port 3 (closed)



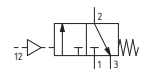
Weight 3417 g

PC6V211E00000

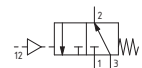
3/2



N.O.
 Pump 3
 Outlet port 2
 Exhaust port 1



N.C.
 Pump 1
 Outlet port 2
 Exhaust port 3



Weight 3168 g

PC6V311E00000

Solenoid-Spring

Coding: P06VN01VET

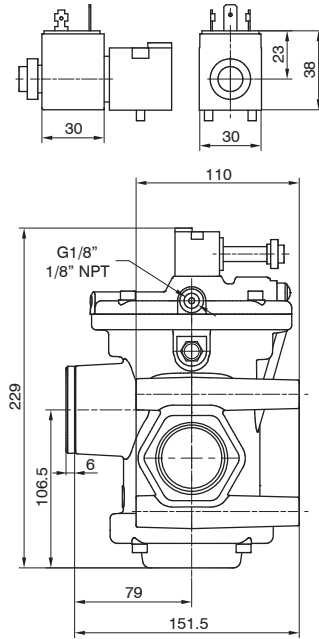
Operational characteristics	
Fluid	Vacuum
Minimum pilot pressure (bar)	2 (external feeding version)
Temperature °C	-5 ... +50
Orifice size (mm)	38
Working ports size	G1 1/2" - 1 1/2" NPT
Pilot ports size	G1/8" - 1/8" NPT
Max. vacuum (mmHg)	758,5
Minimum operating vacuum (mmHg)	250 (self feeding version)

CONNECTIONS	
G	= Gas thread
N	= NPT thread
WAYS NUMBER	
N	2 = 2 ways, 2 positions
3	= 3 ways, 2 positions
VERSION	
V	A = Self feeding
E	= External feeding
FUNCTION	
F	A = Normally Open (only for 3 ways)
C	= Normally Closed
VOLTAGE (22 MM SOLENOID COIL)	
S40B0	= 12 VDC
S50B0	= 24 VDC
S60B0	= 24 V 50/60 Hz
S70B0	= 110 V 50/60 Hz
S80B0	= 230 V 50/60 Hz
10000	= Without solenoid coil
VOLTAGE (30 MM SOLENOID COIL)	
S40C0	= 12 VDC
S50C0	= 24 VDC
S60C0	= 24 V 50/60 Hz
S70C0	= 110 V 50/60 Hz
S80C0	= 230 V 50/60 Hz
10000	= Without solenoid coil

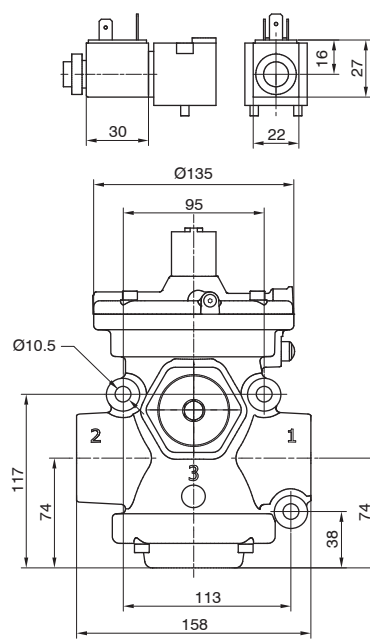
2/2



30 mm SOLENOID COIL
Connection: DIN 43650 "A" SHAPE



22 mm SOLENOID COIL
Connection: DIN 43650 INDUSTRIAL "B" SHAPE

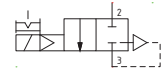


Weight 3491,5 g

P06VN01VET

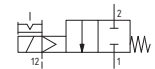
Self feeding - N.C.

Pump 3
Outlet port 2
Exhaust port 1 (closed)



External feeding - N.C.

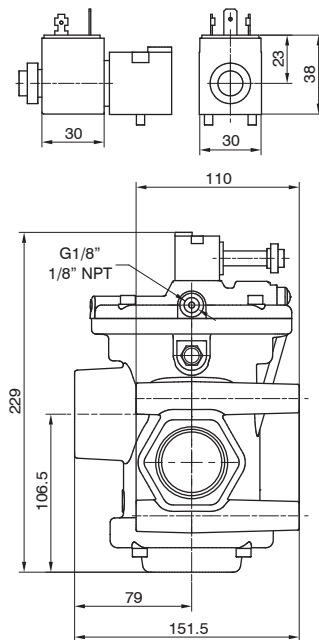
Pump 1
Outlet port 2
Exhaust port 3 (closed)



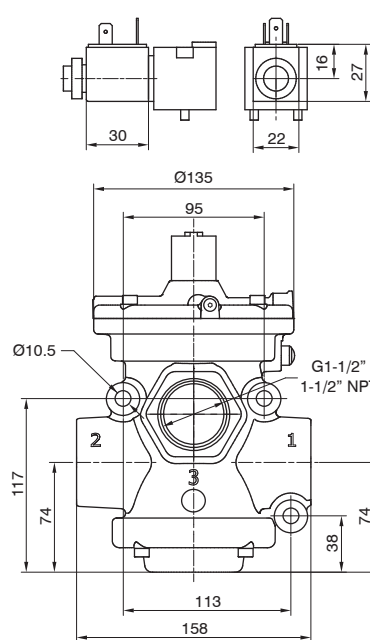
3/2



30 mm SOLENOID COIL
Connection: DIN 43650 "A" SHAPE



22 mm SOLENOID COIL
Connection: DIN 43650 INDUSTRIAL "B" SHAPE

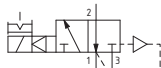


Weight 3242,5 g

P06V301VET

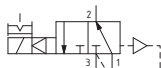
Self feeding - N.O.

Pump 1
Outlet port 2
Exhaust port 3



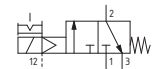
Self feeding - N.C.

Pump 3
Outlet port 2
Exhaust port 1



External feeding - N.O.

Pump 3
Outlet port 2
Exhaust port 1



External feeding - N.C.

Pump 1
Outlet port 2
Exhaust port 3

