



**Series T772-773 - for compressed air and vacuum in technopolymer - G1/2" and G3/4"**

The range of G1/2" and G3/4" pilot and solenoid operated poppet valves are manufactured with high impact resistant thermoplastic. The use of this material results in a versatile, lightweight and economical valve. The traditional piston lip seal has been replaced with a rolling diaphragm, thereby eliminating frictional wear and tear to this seal. The valves (with the exception of certain vacuum models) also features a seal, which separates port 3 from the piston head. The inclusion of this seal has enhanced the valve's performance and allows the valve to be used as normally open (a configuration not possible in the Zama series). Solenoid operated valves (both internal and external pilot versions) are fitted with a quick exhaust unit, which reduces the return stroke operating time by 60%. The bulk of the valves in this series use the MP type operator, the exception being internally piloted vacuum models, which use the MV operator. These operators differ from the M2 type in that they have self-tapping mounting screws for use in plastics. **The ordering code are referring to the solenoid valves with mechanics "MP" or "MV" assembled.** Coils are not included and have to be ordered separately (series 300, Section 1, General Catalogue), with the exception of the bistable versions which already include 24V DC Coils (N331.0A). Coils with CE homologated are also available. (See series 300).

1 AIR DISTRIBUTION

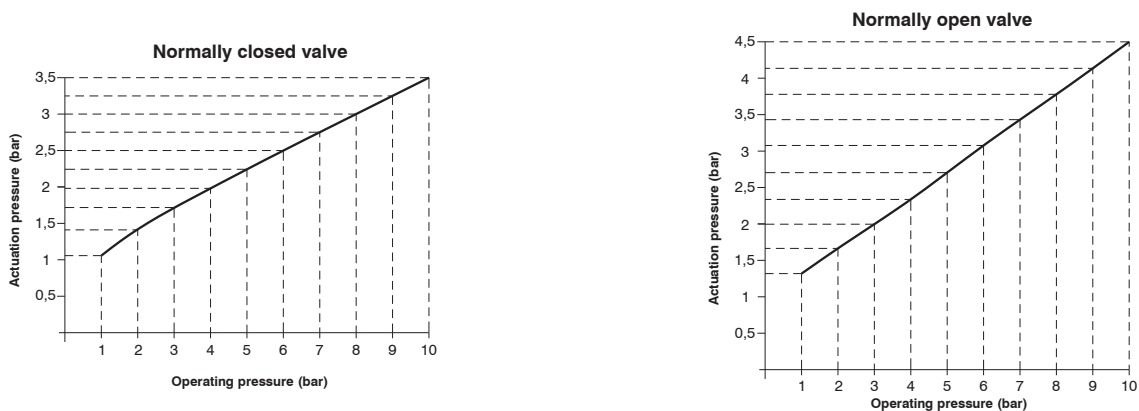
**Construction characteristics**

Body, operator and end cover	High impact resistant thermoplastic
Seals and poppets	NBR
Diaphragm	Oil resistant rubber (NBR)
Springs	AISI 302 stainless steel
Piston and shaft	Acetal resin

**Use and maintenance**

These valves have a mean life of 10 to 15 million cycles under normal operating conditions. Lubrication is not required for good operation but we recommend good filtration to avoid dirty deposit causing malfunction. Please ensure that the valve is being used according with the manufacturers specification, such as air pressure and temperature. The exhaust port of the distributor has to be protected in a dusty and dirty environment. For these products, according to the construction technique and special application, is not required any maintenance with parts replacement. When necessary it is sufficient to clean the internal parts. When it is used the solenoid valves with internal pilot, either for air or vacuum, inlet flow rate must be equal or higher that the required consumption flow rate. Otherwise is better choose the external pilot version.

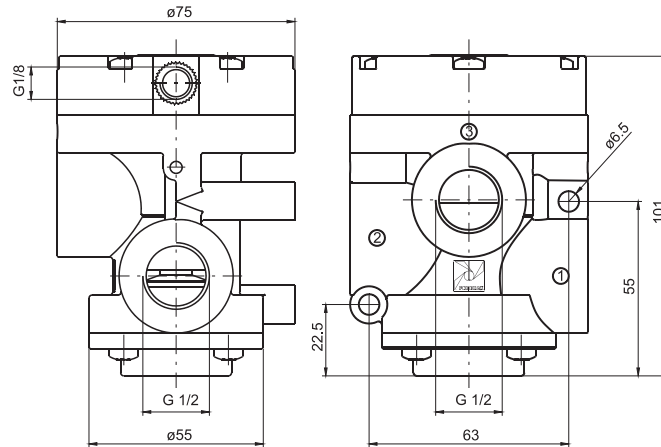
**MINIMUM PILOTING PRESSURE DIAGRAM (Valves for compressed air)  
 PNEUMATIC/SRING AND EXTERNAL SOLENOID PILOT VERSION**



**Pneumatic - Spring**

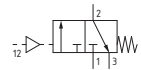
Coding: T772.32.11.1

Operational characteristics	
Fluid	filtered and lubricated air or non
Max. working pressure (bar)	10
Minimum pilot pressure (bar)	See diagram at general page
Temperature °C	-5 ... +50
Flow rate at 6 bar with Δp=1 (NI/min)	4100
Orifice size (mm)	15
Working ports size	G1/2"
Pilot ports size	G1/8"
Compressed air, purity class according to ISO 8573-1:2010	7:4:4

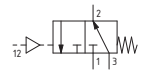


Weight 350 g

**N.C.**  
Inlet port 1  
Outlet port 2  
Exhaust port 3



**N.O.**  
Inlet port 3  
Outlet port 2  
Exhaust port 1



1

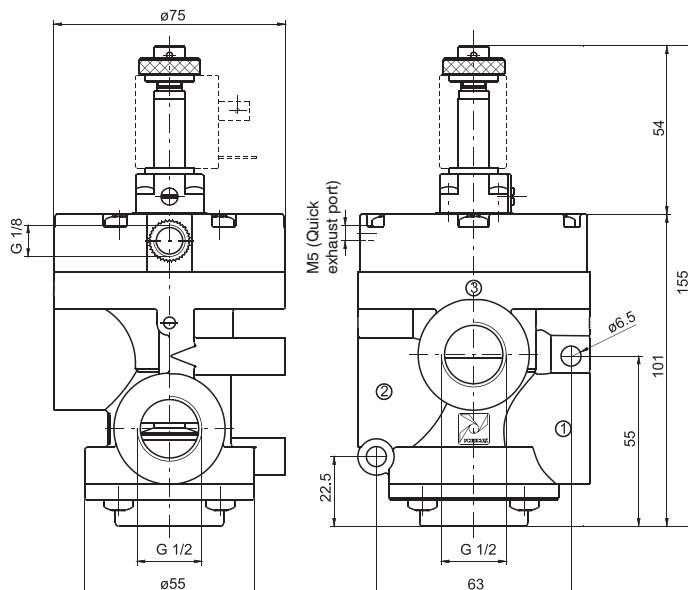
AIR DISTRIBUTION

**Solenoid-Spring-Internal pilot**

Coding: T772.32.0.Ⓜ.MP

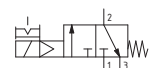
Operational characteristics	
Fluid	filtered and lubricated air or non
Max. working pressure (bar)	10
Minimum pilot pressure (bar)	2,5
Temperature °C	-5 ... +50
Flow rate at 6 bar with Δp=1 (NI/min)	4100
Orifice size (mm)	15
Working ports size	G1/2"
Pilot ports size	G1/8"
Compressed air, purity class according to ISO 8573-1:2010	7:4:4

FUNCTION	
<b>F</b>	1AA = Normally Open
	1AC = Normally Closed

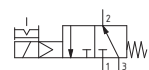


Weight 390 g

**N.C.**  
Inlet port 1  
Outlet port 2  
Exhaust port 3



**N.O.**  
Inlet port 3  
Outlet port 2  
Exhaust port 1





**Solenoid-Spring-External pilot**

Coding: T772.32.0.1.MP

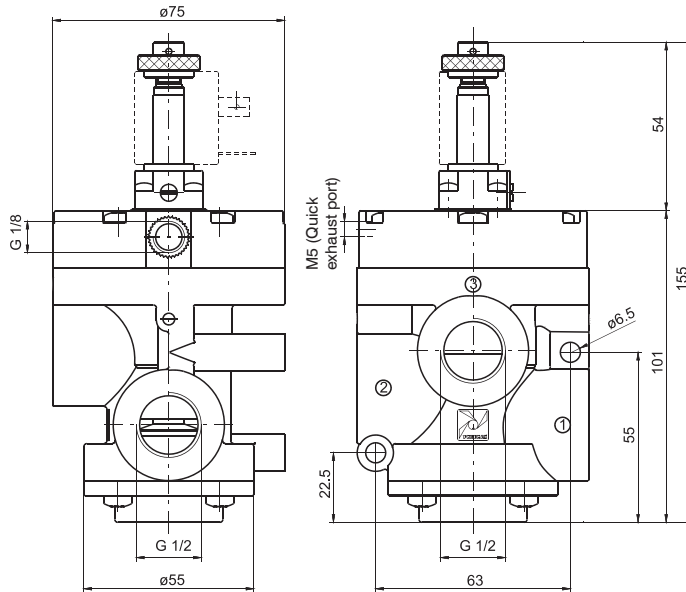
Operational characteristics	
Fluid	filtered and lubricated air or non
Max. working pressure (bar)	10
Minimum pilot pressure (bar)	See diagram at general page
Temperature °C	-5 ... +50
Flow rate at 6 bar with $\Delta p=1$ (NI/min)	4100
Orifice size (mm)	15
Working ports size	G1/2"
Pilot ports size	G1/8"
Compressed air, purity class according to ISO 8573-1:2010	7:4:4

1

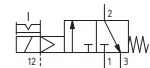
AIR DISTRIBUTION



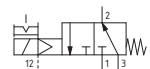
Weight 390 g



**N.C.**  
 Inlet port 1  
 Outlet port 2  
 Exhaust port 3



**N.O.**  
 Inlet port 3  
 Outlet port 2  
 Exhaust port 1



**Solenoid-Spring - Internal pilot with quick exhaust**

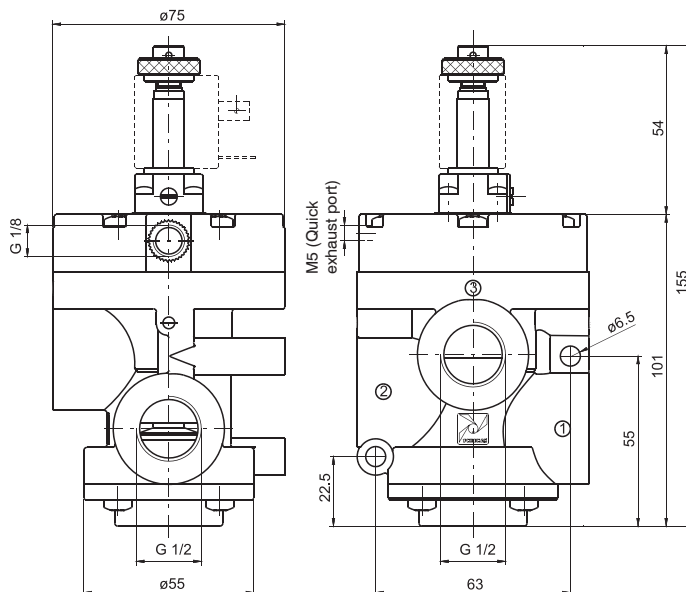
Coding: T772S.32.0.1.MP

Operational characteristics	
Fluid	filtered and lubricated air or non
Max. working pressure (bar)	10
Minimum pilot pressure (bar)	2,5
Temperature °C	-5 ... +50
Flow rate at 6 bar with $\Delta p=1$ (NI/min)	4100
Orifice size (mm)	15
Working ports size	G1/2"
Pilot ports size	G1/8"
Compressed air, purity class according to ISO 8573-1:2010	7:4:4

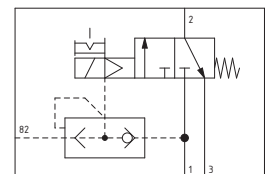
FUNCTION	
<b>F</b>	1AA = Normally Open
	1AC = Normally Closed



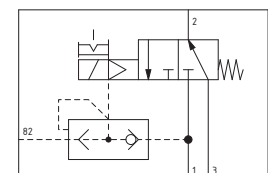
Weight 390 g



**N.C.**  
 Inlet port 1  
 Outlet port 2  
 Exhaust port 3



**N.O.**  
 Inlet port 3  
 Outlet port 2  
 Exhaust port 1



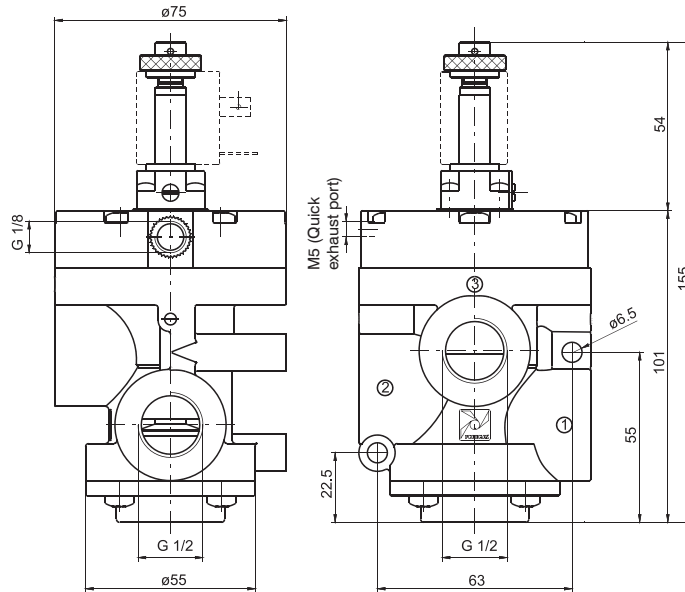
**Solenoid-Spring - External pilot with quick exhaust**

Coding: T772S.32.0.1.MP

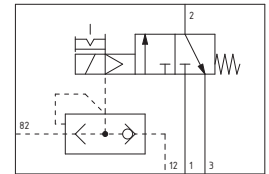
Operational characteristics	
Fluid	filtered and lubricated air or non
Max. working pressure (bar)	10
Minimum pilot pressure (bar)	See diagram at general page
Temperature °C	-5 ... +50
Flow rate at 6 bar with $\Delta p=1$ (NI/min)	4100
Orifice size (mm)	15
Working ports size	G1/2"
Pilot ports size	G1/8"
Compressed air, purity class according to ISO 8573-1:2010	7:4:4



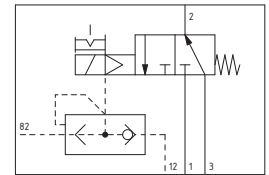
Weight 390 g



**N.C.**  
Inlet port 1  
Outlet port 2  
Exhaust port 3



**N.O.**  
Inlet port 3  
Outlet port 2  
Exhaust port 1



1  
AIR DISTRIBUTION

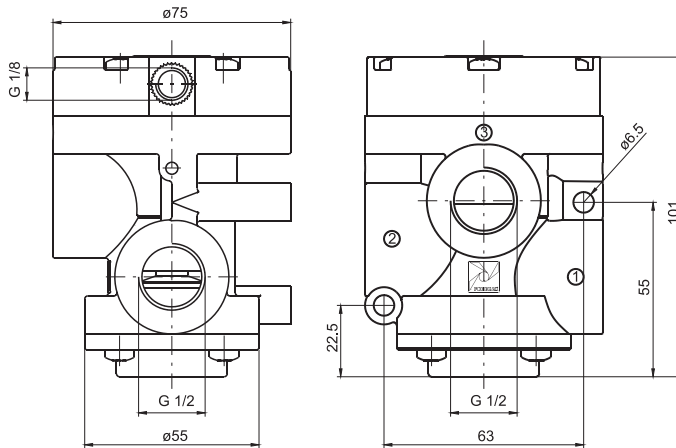


**Pneumatic - Spring**

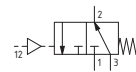
Coding: T772/V.32.11.1

Operational characteristics	
Fluid	Vacuum
Minimum pilot pressure (bar)	2,5
Temperature °C	-5 ... +50
Orifice size (mm)	15
Working ports size	G1/2"
Pilot ports size	G1/8"
Response time according to ISO 12238, activation time (ms)	N.C. = 50 - N.O. = 27
Response time according to ISO 12238, deactivation time (ms)	N.C. = 150 - N.O. = 195

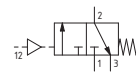
AIR DISTRIBUTION



**N.C.**  
 Exhaust port 3  
 Outlet port 2  
 Pump 1



**N.O.**  
 Exhaust port 1  
 Outlet port 2  
 Pump 3



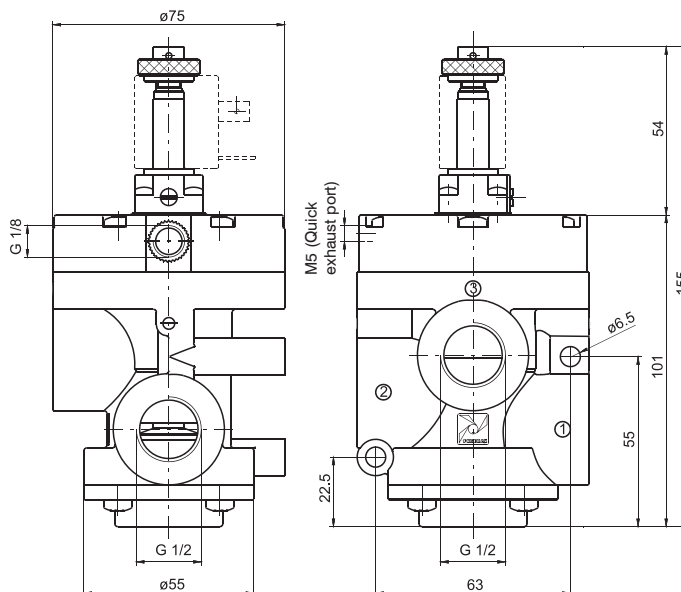
Weight 350 g

**Solenoid-Spring-Internal pilot**

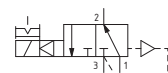
Coding: T772/V.32.0. MV

Operational characteristics	
Fluid	Vacuum
Temperature °C	-5 ... +50
Orifice size (mm)	15
Working ports size	G1/2"
Pilot ports size	G1/8"
Response time according to ISO 12238, activation time (ms)	1AC = 55 - 1AA = 33
Response time according to ISO 12238, deactivation time (ms)	1AC = 30 - 1AA = 38

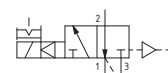
FUNCTION	
<b>F</b>	1AA = Normally Open
	1AC = Normally Closed



**N.C.**  
 Exhaust port 1  
 Outlet port 2  
 Pump 3



**N.O.**  
 Exhaust port 3  
 Outlet port 2  
 Pump 1



Weight 390 g

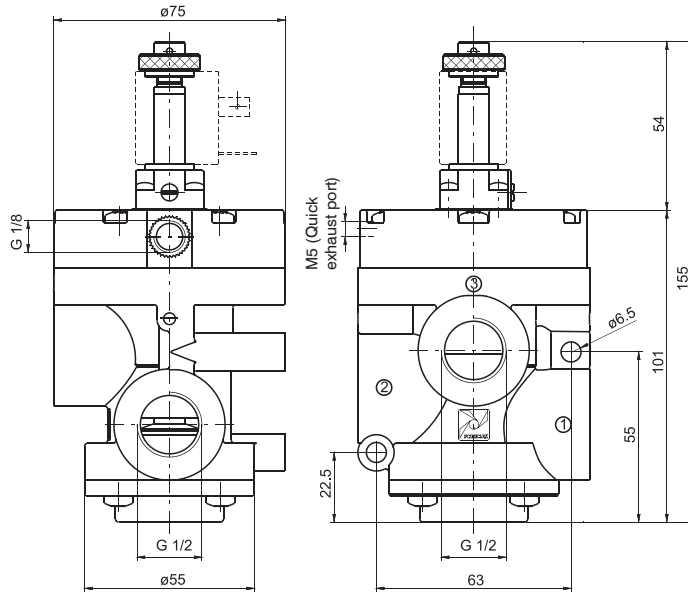
**Solenoid-Spring-External pilot**

Coding: T772/V.32.0.1.MP

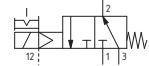
Operational characteristics	
Fluid	Vacuum
Minimum pilot pressure (bar)	2,5
Temperature °C	-5 ... +50
Orifice size (mm)	15
Working ports size	G1/2"
Pilot ports size	G1/8"
Response time according to ISO 12238, activation time (ms)	N.C. = 42 - N.O. = 22
Response time according to ISO 12238, deactivation time (ms)	N.C. = 135 - N.O. = 175



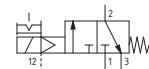
Weight 390 g



**N.C.**  
Exhaust port 3  
Outlet port 2  
Pump 1



**N.O.**  
Exhaust port 1  
Outlet port 2  
Pump 3



1

AIR DISTRIBUTION

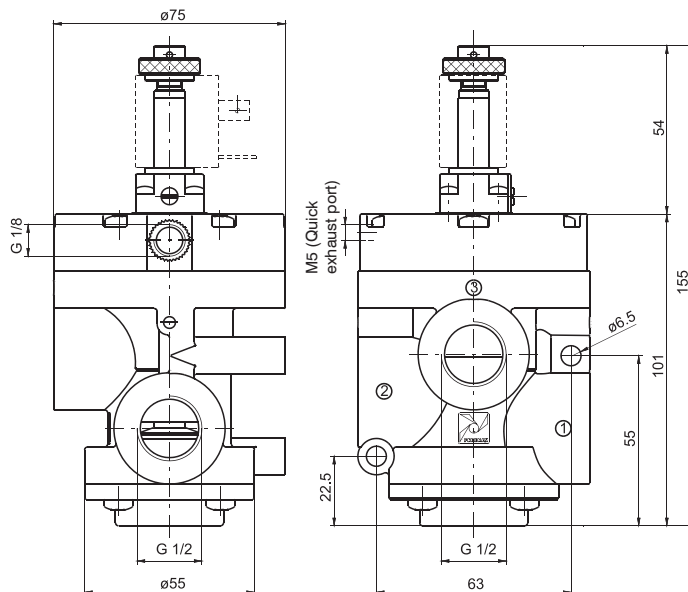
**Solenoid-Spring - External pilot with quick exhaust**

Coding: T772/VS.32.0.1.MP

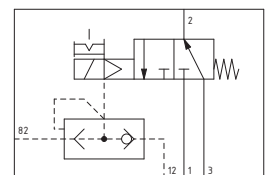
Operational characteristics	
Fluid	Vacuum
Minimum pilot pressure (bar)	2,5
Temperature °C	-5 ... +50
Orifice size (mm)	15
Working ports size	G1/2"
Pilot ports size	G1/8"
Response time according to ISO 12238, activation time (ms)	N.C. = 43 - N.O. = 25
Response time according to ISO 12238, deactivation time (ms)	N.C. = 37 - N.O. = 42



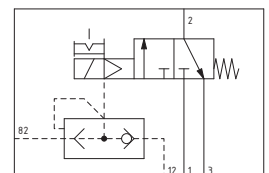
Weight 390 g



**N.C.**  
Exhaust port 3  
Outlet port 2  
Pump 1



**N.O.**  
Exhaust port 1  
Outlet port 2  
Pump 3

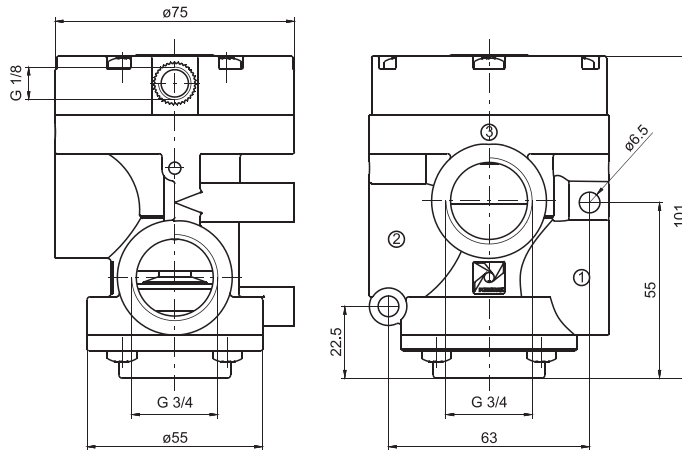


**Pneumatic - Spring**

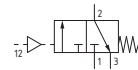
Coding: T773.32.11.1

Operational characteristics	
Fluid	filtered and lubricated air or non
Max. working pressure (bar)	10
Minimum pilot pressure (bar)	See diagram at general page
Temperature °C	-5 ... +50
Flow rate at 6 bar with Δp=1 (NI/min)	7500
Orifice size (mm)	20
Working ports size	G3/4"
Pilot ports size	G1/8"
Compressed air, purity class according to ISO 8573-1:2010	7:4:4

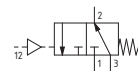
AIR DISTRIBUTION



**N.C.**  
 Inlet port 1  
 Outlet port 2  
 Exhaust port 3



**N.O.**  
 Inlet port 3  
 Outlet port 2  
 Exhaust port 1



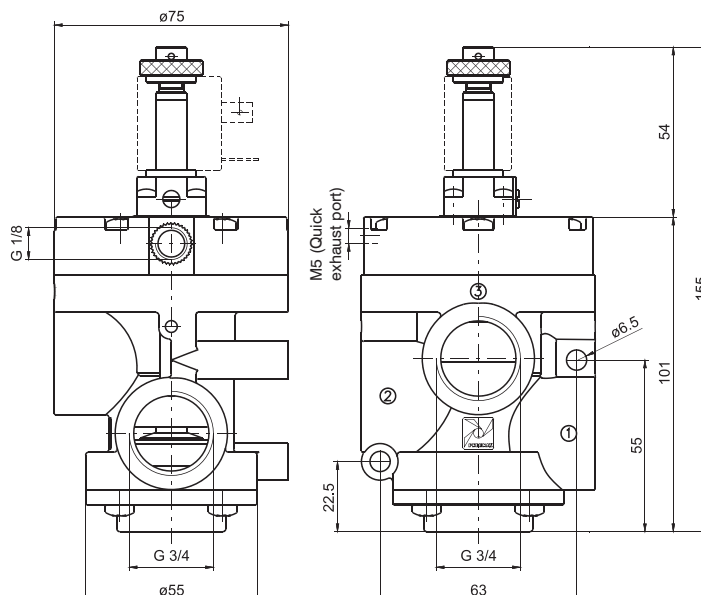
Weight 330 g

**Solenoid-Spring-Internal pilot**

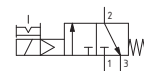
Coding: T773.32.0.1.MP

Operational characteristics	
Fluid	filtered and lubricated air or non
Max. working pressure (bar)	10
Minimum pilot pressure (bar)	2,5
Temperature °C	-5 ... +50
Flow rate at 6 bar with Δp=1 (NI/min)	7500
Orifice size (mm)	20
Working ports size	G3/4"
Pilot ports size	G1/8"
Compressed air, purity class according to ISO 8573-1:2010	7:4:4

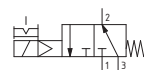
FUNCTION	
<b>F</b>	<b>1AA = Normally Open</b>
	<b>1AC = Normally Closed</b>



**N.C.**  
 Inlet port 1  
 Outlet port 2  
 Exhaust port 3



**N.O.**  
 Inlet port 3  
 Outlet port 2  
 Exhaust port 1



Weight 370 g

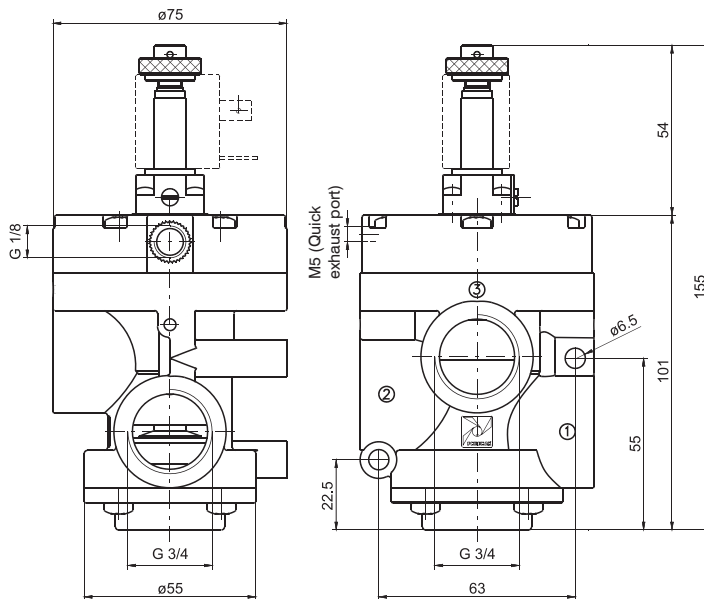
**Solenoid-Spring-External pilot**

Coding: T773.32.0.1.MP

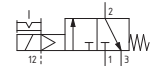
Operational characteristics	
Fluid	filtered and lubricated air or non
Max. working pressure (bar)	10
Minimum pilot pressure (bar)	See diagram at general page
Temperature °C	-5 ... +50
Flow rate at 6 bar with $\Delta p=1$ (NI/min)	7500
Orifice size (mm)	20
Working ports size	G3/4"
Pilot ports size	G1/8"
Compressed air, purity class according to ISO 8573-1:2010	7:4:4



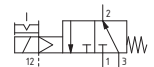
Weight 370 g



**N.C.**  
Inlet port 1  
Outlet port 2  
Exhaust port 3



**N.O.**  
Inlet port 3  
Outlet port 2  
Exhaust port 1



1

AIR DISTRIBUTION

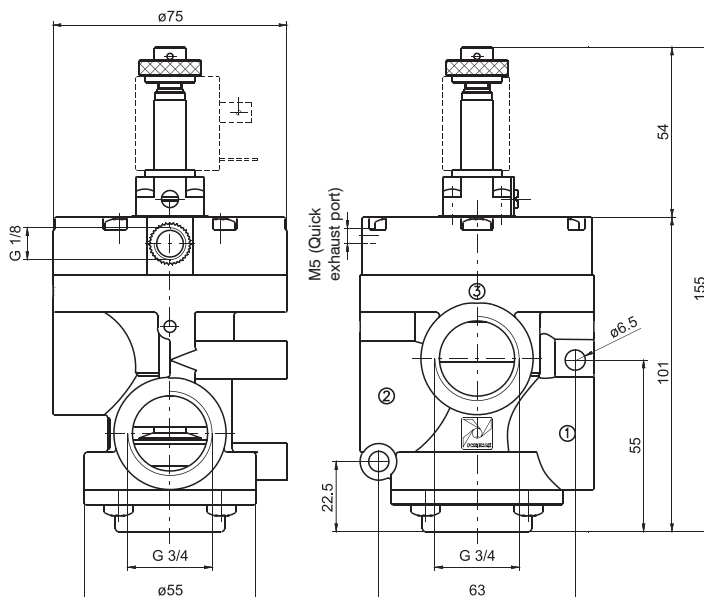
**Solenoid-Spring - Internal pilot with quick exhaust**

Coding: T773S.32.0.1.MP

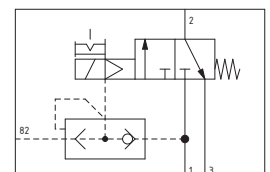
Operational characteristics	
Fluid	filtered and lubricated air or non
Max. working pressure (bar)	10
Minimum pilot pressure (bar)	2,5
Temperature °C	-5 ... +50
Flow rate at 6 bar with $\Delta p=1$ (NI/min)	7500
Orifice size (mm)	20
Working ports size	G3/4"
Pilot ports size	G1/8"
Compressed air, purity class according to ISO 8573-1:2010	7:4:4



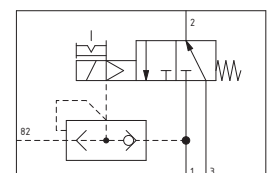
Weight 370 g



**N.C.**  
Inlet port 1  
Outlet port 2  
Exhaust port 3



**N.O.**  
Inlet port 3  
Outlet port 2  
Exhaust port 1





**Solenoid-Spring - External pilot with quick exhaust**

Coding: T773S.32.0.1.MP

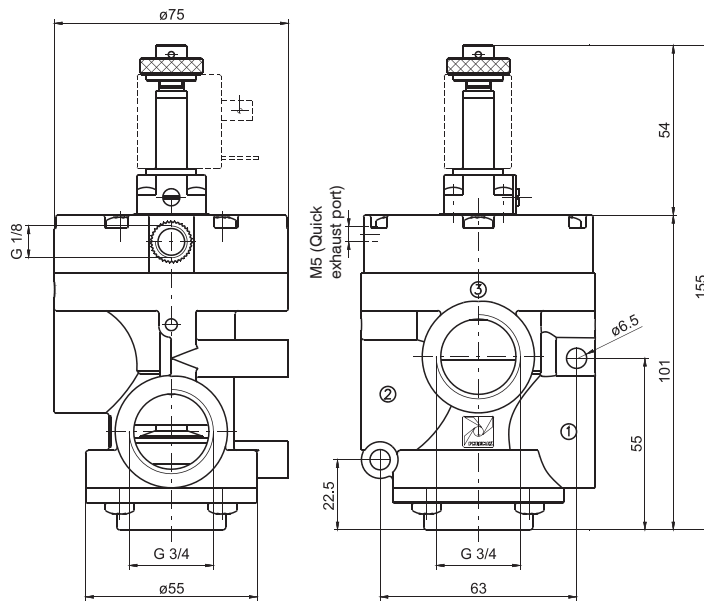
**Operational characteristics**

Fluid	filtered and lubricated air or non
Max. working pressure (bar)	10
Minimum pilot pressure (bar)	See diagram at general page
Temperature °C	-5 ... +50
Flow rate at 6 bar with $\Delta p=1$ (NI/min)	7500
Orifice size (mm)	20
Working ports size	G3/4"
Pilot ports size	G1/8"
Compressed air, purity class according to ISO 8573-1:2010	7:4:4

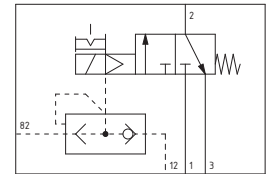
1  
AIR DISTRIBUTION



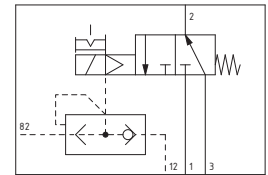
Weight 370 g



**N.C.**  
 Inlet port 1  
 Outlet port 2  
 Exhaust port 3



**N.O.**  
 Inlet port 3  
 Outlet port 2  
 Exhaust port 1



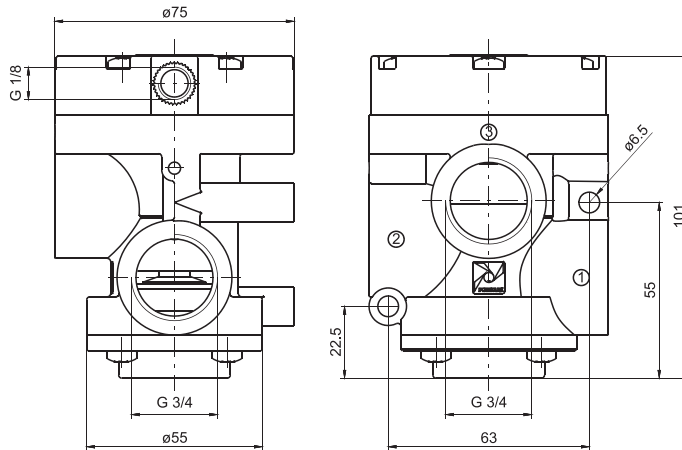
**Pneumatic - Spring**

Coding: T773/V.32.11.1

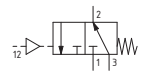
Operational characteristics	
Fluid	Vacuum
Minimum pilot pressure (bar)	2,5
Temperature °C	-5 ... +50
Orifice size (mm)	20
Working ports size	G3/4"
Pilot ports size	G1/8"
Response time according to ISO 12238, activation time (ms)	N.C. = 28 - N.O. = 50
Response time according to ISO 12238, deactivation time (ms)	N.C. = 190 - N.O. = 150



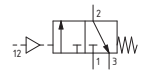
Weight 330 g



**N.C.**  
Exhaust port 3  
Outlet port 2  
Pump 1



**N.O.**  
Exhaust port 1  
Outlet port 2  
Pump 3



1

AIR DISTRIBUTION

**Solenoid-Spring-Internal pilot**

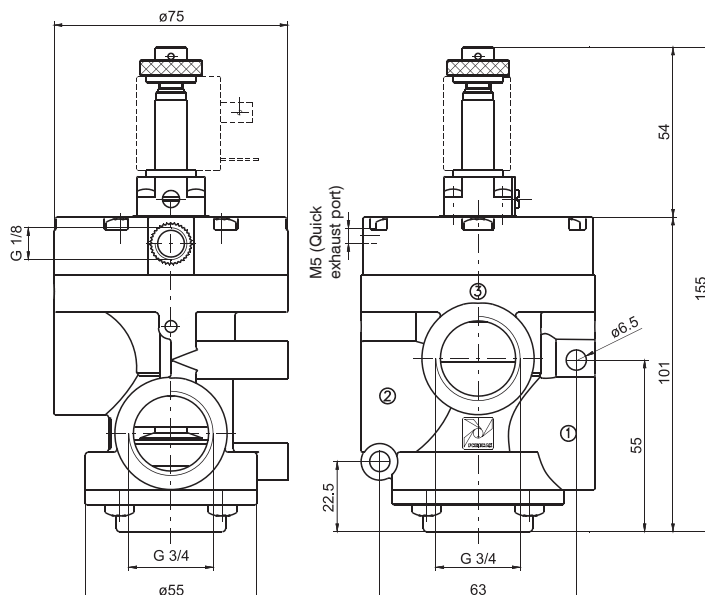
Coding: T773/V.32.0.F.MV

Operational characteristics	
Fluid	Vacuum
Temperature °C	-5 ... +50
Orifice size (mm)	20
Working ports size	G3/4"
Pilot ports size	G1/8"
Response time according to ISO 12238, activation time (ms)	1AC = 35 - 1AA = 32
Response time according to ISO 12238, deactivation time (ms)	1AC = 30 - 1AA = 80

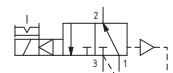
FUNCTION	
<b>F</b>	1AA = Normally Open
	1AC = Normally Closed



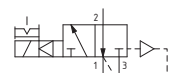
Weight 370 g



**N.C.**  
Exhaust port 1  
Outlet port 2  
Pump 3



**N.O.**  
Exhaust port 3  
Outlet port 2  
Pump 1





**Solenoid-Spring-External pilot**

Coding: T773/V.32.0.1.MP

**Operational characteristics**

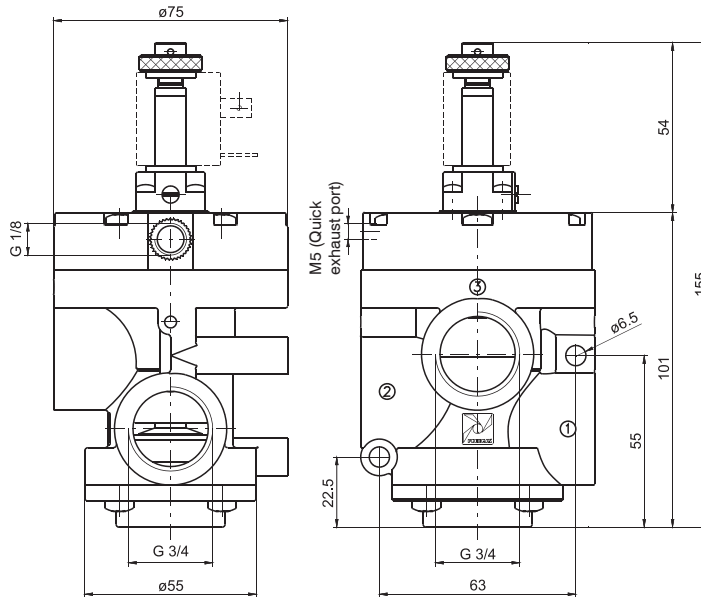
Fluid	Vacuum
Minimum pilot pressure (bar)	2,5
Temperature °C	-5 ... +50
Orifice size (mm)	20
Working ports size	G3/4"
Pilot ports size	G1/8"
Response time according to ISO 12238, activation time (ms)	N.C. = 25 - N.O. = 40
Response time according to ISO 12238, deactivation time (ms)	N.C. = 175 - N.O. = 145

1

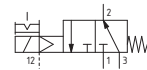
AIR DISTRIBUTION



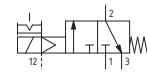
Weight 350 g



**N.C.**  
 Exhaust port 3  
 Outlet port 2  
 Pump 1



**N.O.**  
 Exhaust port 1  
 Outlet port 2  
 Pump 3



**Solenoid-Spring - External pilot with quick exhaust**

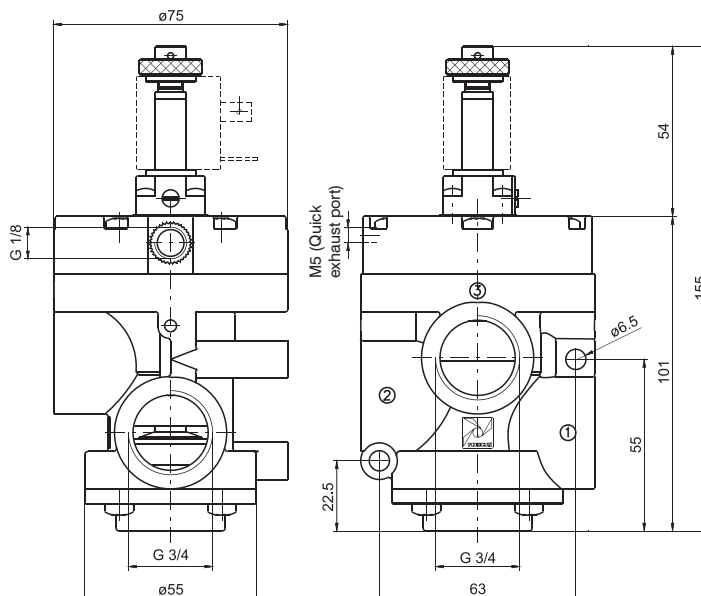
Coding: T773/VS.32.0.1.MP

**Operational characteristics**

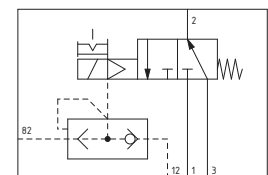
Fluid	Vacuum
Minimum pilot pressure (bar)	2,5
Temperature °C	-5 ... +50
Orifice size (mm)	20
Working ports size	G3/4"
Pilot ports size	G1/8"
Response time according to ISO 12238, activation time (ms)	N.C. = 25 - N.O. = 42
Response time according to ISO 12238, deactivation time (ms)	N.C. = 40 - N.O. = 38



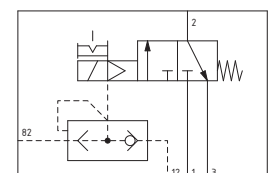
Weight 350 g



**N.C.**  
 Exhaust port 3  
 Outlet port 2  
 Pump 1



**N.O.**  
 Exhaust port 1  
 Outlet port 2  
 Pump 3



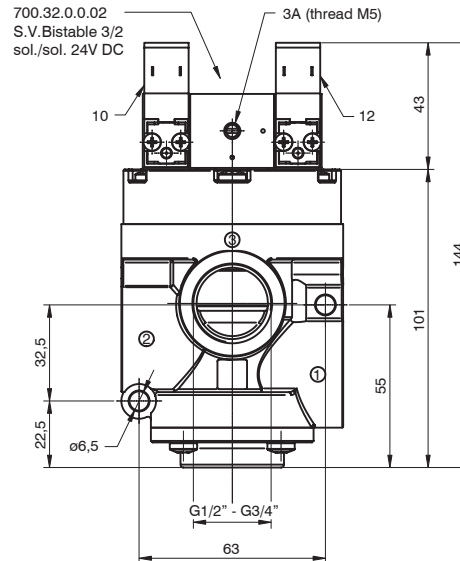
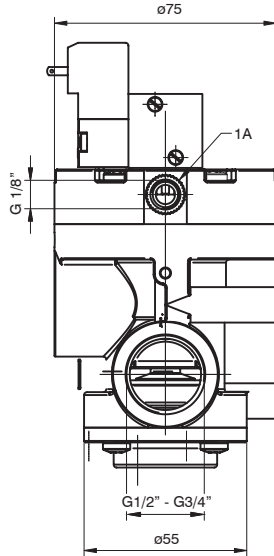
**Bistable for compressed air - G1/2"**

Coding: T772.32.0.1.BP

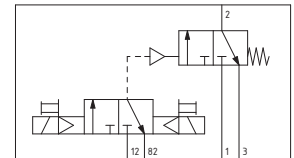
Operational characteristics	
Fluid	filtered and lubricated air or non
Max. working pressure (bar)	10
Minimum pilot pressure (bar)	2
Temperature °C	-5 ... +50
Flow rate at 6 bar with $\Delta p=1$ (NI/min)	4100
Orifice size (mm)	15
Working ports size	G1/2"
Pilot ports size	G1/8"
Compressed air, purity class according to ISO 8573-1:2010	7:4:4



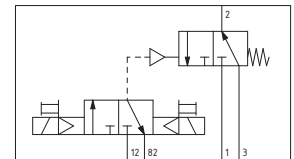
Weight 550 g



**N.C.**  
Inlet port 1  
Outlet port 2  
Exhaust port 3



**N.O.**  
Inlet port 3  
Outlet port 2  
Exhaust port 1



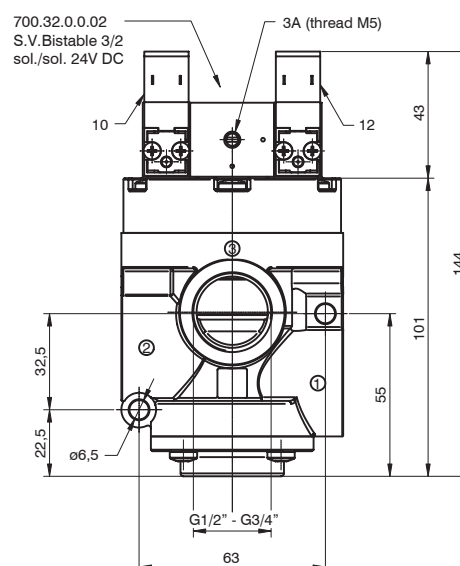
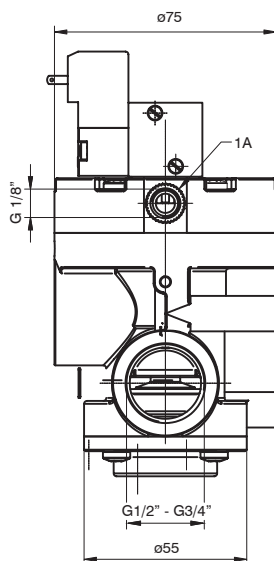
**Bistable for compressed air - G3/4"**

Coding: T773.32.0.1.BP

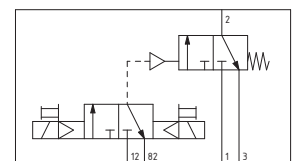
Operational characteristics	
Fluid	filtered and lubricated air or non
Max. working pressure (bar)	10
Minimum pilot pressure (bar)	2
Temperature °C	-5 ... +50
Flow rate at 6 bar with $\Delta p=1$ (NI/min)	7500
Orifice size (mm)	15
Working ports size	G3/4"
Pilot ports size	G1/8"
Compressed air, purity class according to ISO 8573-1:2010	7:4:4



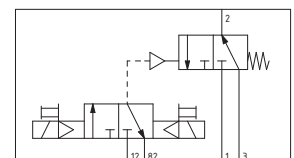
Weight 550 g



**N.C.**  
Inlet port 1  
Outlet port 2  
Exhaust port 3



**N.O.**  
Inlet port 3  
Outlet port 2  
Exhaust port 1





**Valves and solenoid valves poppet system**  
**Series T772-773 - bistable for compressed air in technopolymer - G1/2" and G3/4"**

**Bistable for compressed air with quick exhaust - G1/2"**

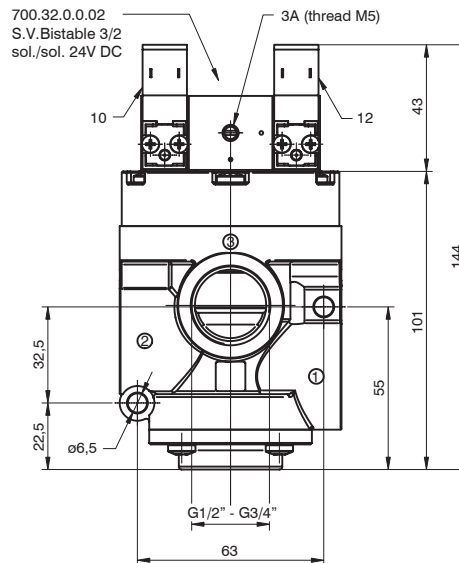
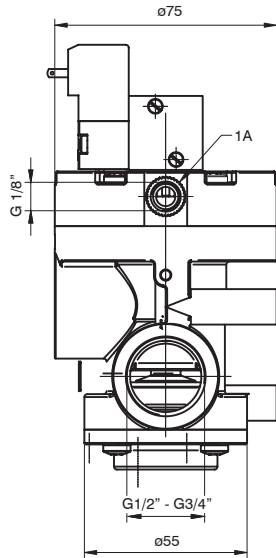
Coding: T772S.32.0.1.BP

Operational characteristics	
Fluid	filtered and lubricated air or non
Max. working pressure (bar)	10
Minimum pilot pressure (bar)	2
Temperature °C	-5 ... +50
Flow rate at 6 bar with $\Delta p=1$ (NI/min)	4100
Orifice size (mm)	15
Working ports size	G1/2"
Pilot ports size	G1/8"
Compressed air, purity class according to ISO 8573-1:2010	7:4:4

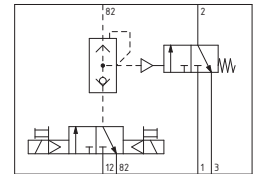
AIR DISTRIBUTION



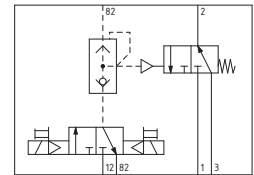
Weight 550 g



**N.C.**  
 Inlet port 1  
 Outlet port 2  
 Exhaust port 3



**N.O.**  
 Inlet port 3  
 Outlet port 2  
 Exhaust port 1



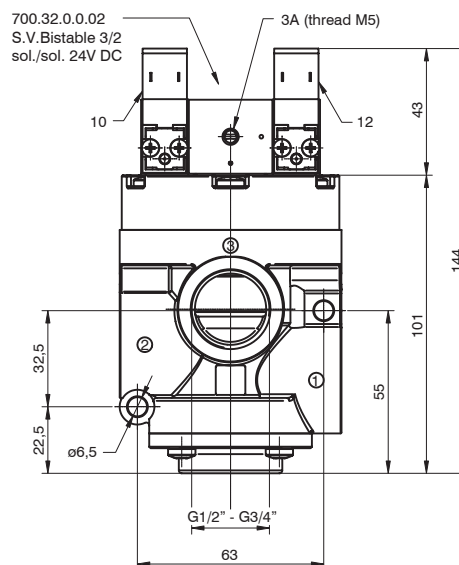
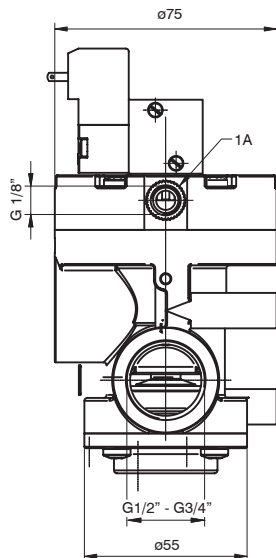
**Bistable for compressed air with quick exhaust G3/4"**

Coding: T773S.32.0.1.BP

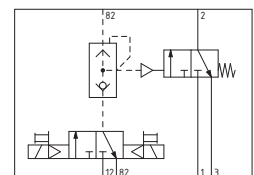
Operational characteristics	
Fluid	filtered and lubricated air or non
Max. working pressure (bar)	10
Minimum pilot pressure (bar)	2
Temperature °C	-5 ... +50
Flow rate at 6 bar with $\Delta p=1$ (NI/min)	7500
Orifice size (mm)	15
Working ports size	G3/4"
Pilot ports size	G1/8"
Compressed air, purity class according to ISO 8573-1:2010	7:4:4



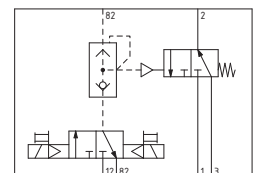
Weight 550 g



**N.C.**  
 Inlet port 1  
 Outlet port 2  
 Exhaust port 3



**N.O.**  
 Inlet port 3  
 Outlet port 2  
 Exhaust port 1



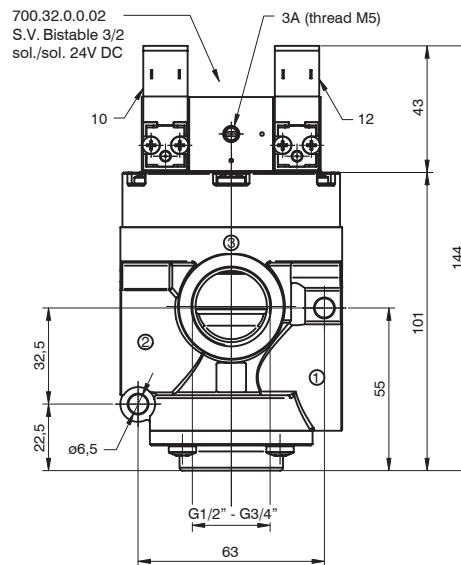
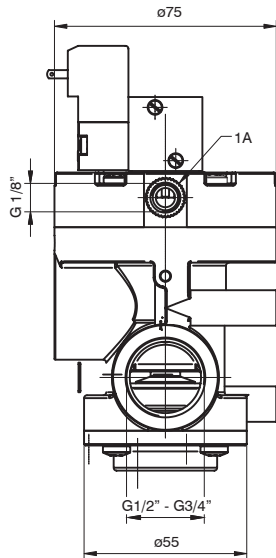
**Bistable for vacuum - G1/2"**

Coding: T772/V.32.0.1.BP

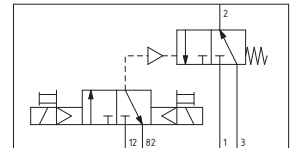
Operational characteristics	
Fluid	Vacuum
Minimum pilot pressure (bar)	2,5
Temperature °C	-5 ... +50
Orifice size (mm)	15
Working ports size	G1/2"
Pilot ports size	G1/8"



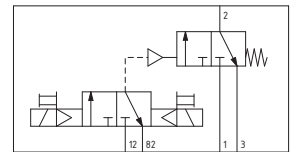
Weight 550 g



**N.C.**  
Pump 1  
Outlet port 2  
Exhaust port 3



**N.O.**  
Pump 3  
Outlet port 2  
Exhaust port 1



1  
AIR DISTRIBUTION

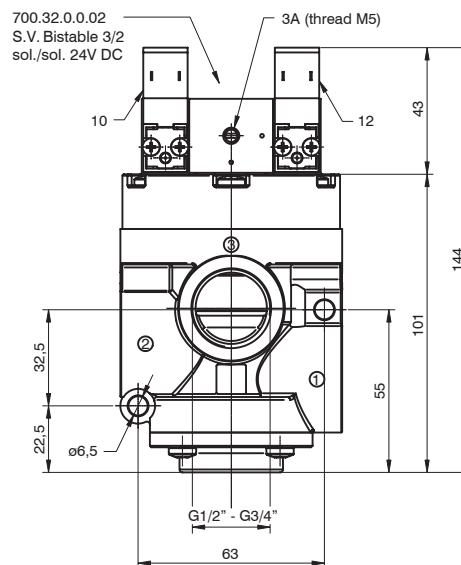
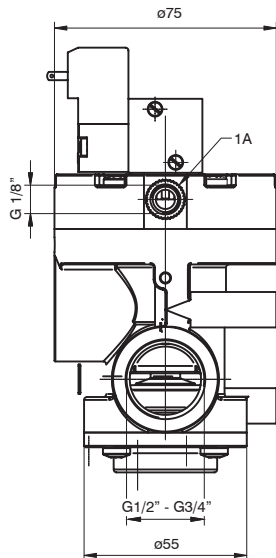
**Bistable for vacuum - G3/4"**

Coding: T773/V.32.0.1.BP

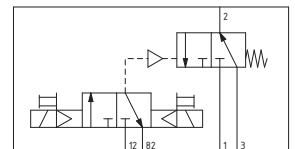
Operational characteristics	
Fluid	Vacuum
Minimum pilot pressure (bar)	2,5
Temperature °C	-5 ... +50
Orifice size (mm)	15
Working ports size	G3/4"
Pilot ports size	G1/8"



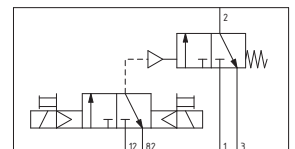
Weight 550 g



**N.C.**  
Pump 1  
Outlet port 2  
Exhaust port 3



**N.O.**  
Pump 3  
Outlet port 2  
Exhaust port 1





**Bistable for vacuum with quick exhaust - G1/2"**

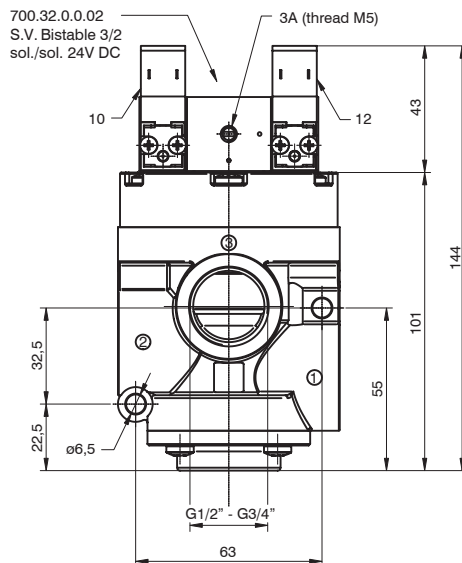
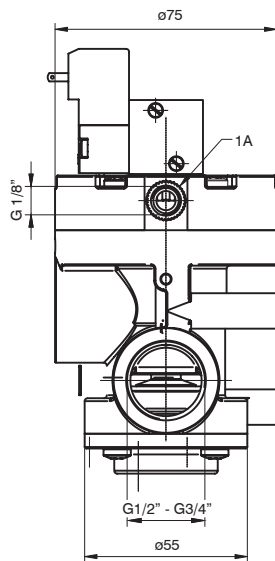
Coding: T772/VS.32.0.1.BP

Operational characteristics	
Fluid	Vacuum
Minimum pilot pressure (bar)	2,5
Temperature °C	-5 ... +50
Orifice size (mm)	15
Working ports size	G1/2"
Pilot ports size	G1/8"

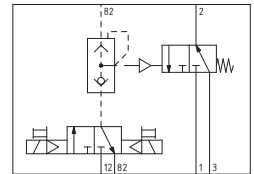
1  
AIR DISTRIBUTION



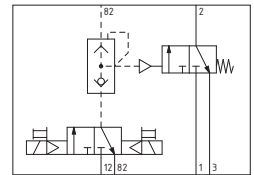
Weight 550 g



**N.C.**  
 Pump 1  
 Outlet port 2  
 Exhaust port 3



**N.O.**  
 Pump 3  
 Outlet port 2  
 Exhaust port 1



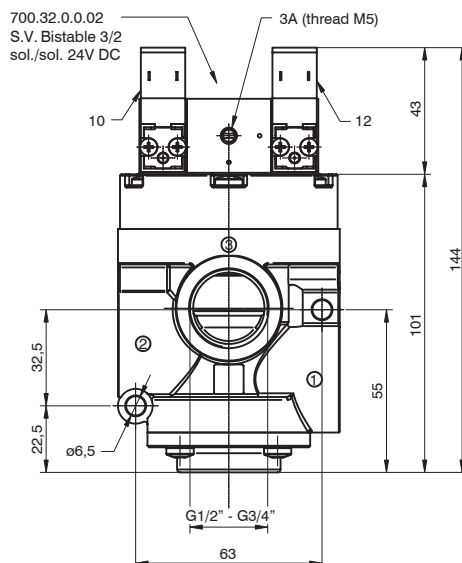
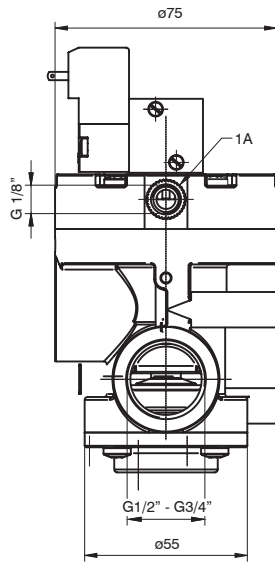
**Bistable for vacuum with quick exhaust - G3/4"**

Coding: T773/VS.32.0.1.BP

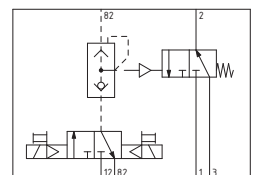
Operational characteristics	
Fluid	Vacuum
Minimum pilot pressure (bar)	2,5
Temperature °C	-5 ... +50
Orifice size (mm)	15
Working ports size	G3/4"
Pilot ports size	G1/8"



Weight 550 g



**N.C.**  
 Pump 1  
 Outlet port 2  
 Exhaust port 3



**N.O.**  
 Pump 3  
 Outlet port 2  
 Exhaust port 1

