



Series 2100

This solenoid valves series has been developed to meet requirements for electronically controlled pneumatic systems and / or serial control systems already used in all manufacturing sectors.

They have been designed to be easily assembled into groups or manifolds and include integral electrical connection to facilitate simple and speedy integration into a control system.

The 2100 series comprises a range of products classified according to the body size of 10 mm divided into 3 types "LINE", "FLAT" and "BASE". The 10mm. and 18 mm. 24 VDC range of valves includes a range of accessories for the production of manifolded valve assemblies with integral electrical connections.

Modules are available in two or four station variants for flexibility and are supplied to IP40 or alternatively IP65 environmental protection.

AIR DISTRIBUTION 1

Construction characteristics

Central body	Extruded aluminium bar with chemical nickel treatment and PTFE (polytetrafluorethylene)
Connection plates	Technopolymer
Spool seals	Oil resistant nitrile rubber-HNBR
Springs	AISI 302 stainless steel
Operators	Technopolymer
Pistons	Aluminium 2011
Spools	Aluminium 2011

Ordering codes for miniature solenoid valves

The 10 mm. miniature solenoid valve with 0,7 mm. orifice has been selected for piloting this series of valves (see Series 300). This results in low response times and reduced power consumption.

The valve can be supplied with the coil upward or downward depending on the application.

Codes are as follows:

Coil upward code

- 01 = miniature sol. + 12 V DC 90°conn. with LED
- 21 = miniature sol. + 12 V DC line conn. with LED
- 02 = miniature sol. + 24 V DC 90°conn. with LED
- 22 = miniature sol. + 24 V DC line conn. with LED

Coil downward code

- 11 = miniature sol. + 12 V DC 90°conn. with LED
- 31 = miniature sol. + 12 V DC line conn. with LED
- 12 = miniature sol. + 24 V DC 90°conn. with LED
- 32 = miniature sol. + 24 V DC line conn. with LED
- 91 = miniature sol. + 12 V DC for integral electrical connections
- 92 = miniature sol. + 24 V DC for integral electrical connections

Miniature solenoid c  US homologated are available (see Series 300).

Use and maintenance

The average life of the solenoid valve exceeds 50.000.000 cycles when used under optimum conditions.

Adequate lubrication reduces seals wear, just as proper filtering of supply air prevents the build-up of dirt that can cause malfunction.

Ensure the valve is used within our recommended criteria for pressure and temperature.

In dirty or dusty environments, the exhaust ports should be protected.

Seals kits are available for repairs.

Repairs must be made exclusively by specialized personnel.

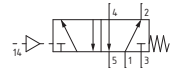
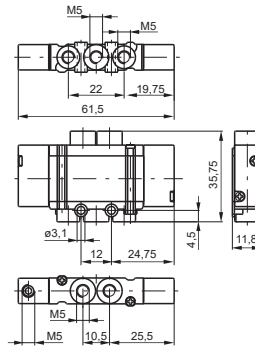
Pneumatic - Spring

Coding: 2115.52.00.19

Operational characteristics	
Fluid	Filtered air. No lubrication needed, if applied it shall be continuous
Max. working pressure (bar)	7
Temperature °C	-5 ... +50
Flow rate at 6 bar with $\Delta p=1$ (NI/min)	150
Orifice size (mm)	2.5
Working ports size	M5



Weight 30 g
Minimum pilot pressure 2 bar



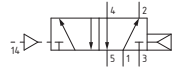
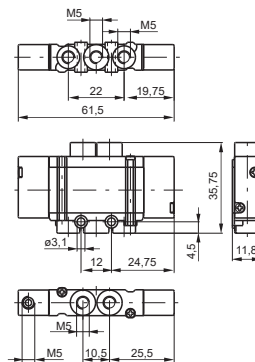
Pneumatic-Differential

Coding: 2115.52.00.16

Operational characteristics	
Fluid	Filtered air. No lubrication needed, if applied it shall be continuous
Max. working pressure (bar)	7
Temperature °C	-5 ... +50
Flow rate at 6 bar with $\Delta p=1$ (NI/min)	150
Orifice size (mm)	2.5
Working ports size	M5



Weight 28 g
Minimum pilot pressure 2 bar



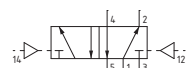
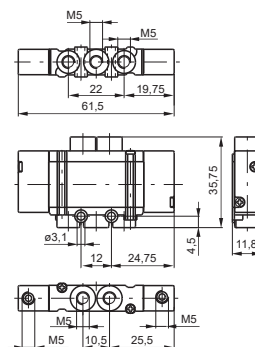
Pneumatic - Pneumatic

Coding: 2115.52.00.18

Operational characteristics	
Fluid	Filtered air. No lubrication needed, if applied it shall be continuous
Max. working pressure (bar)	7
Temperature °C	-5 ... +50
Flow rate at 6 bar with $\Delta p=1$ (NI/min)	150
Orifice size (mm)	2.5
Working ports size	M5



Weight 30 g
Minimum pilot pressure 2 bar



1
AIR DISTRIBUTION

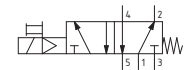
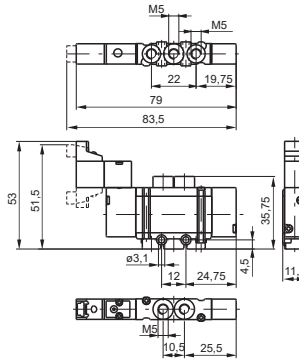


Solenoid - Spring

Coding: 2115.52.00.39. **T**

Operational characteristics	
Fluid	Filtered air. No lubrication needed, if applied it shall be continuous
Max. working pressure (bar)	7
Temperature °C	-5 ... +50
Flow rate at 6 bar with $\Delta p=1$ (NI/min)	150
Orifice size (mm)	2.5
Working ports size	M5

VOLTAGE
01 = + 12 V DC 90° conn. with LED
21 = + 12 V DC line conn. with LED
02 = + 24 V DC 90° conn. with LED
22 = + 24 V DC line conn. with LED
11 = + 12 V DC 90° conn. with LED downward
31 = + 12 V DC line conn. with LED downward
12 = + 24 V DC 90° conn. with LED downward
32 = + 24 V DC line conn. with LED downward



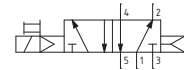
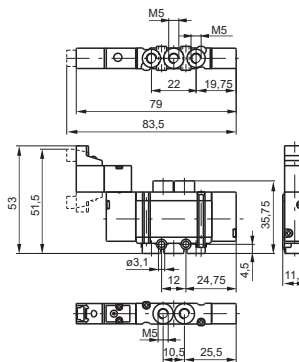
Weight 42 g
Minimum pilot pressure 2 bar

Solenoid - Differential

Coding: 2115.52.00.36. **T**

Operational characteristics	
Fluid	Filtered air. No lubrication needed, if applied it shall be continuous
Max. working pressure (bar)	7
Temperature °C	-5 ... +50
Flow rate at 6 bar with $\Delta p=1$ (NI/min)	150
Orifice size (mm)	2.5
Working ports size	M5

VOLTAGE
01 = + 12 V DC 90° conn. with LED
21 = + 12 V DC line conn. with LED
02 = + 24 V DC 90° conn. with LED
22 = + 24 V DC line conn. with LED
11 = + 12 V DC 90° conn. with LED downward
31 = + 12 V DC line conn. with LED downward
12 = + 24 V DC 90° conn. with LED downward
32 = + 24 V DC line conn. with LED downward



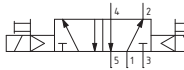
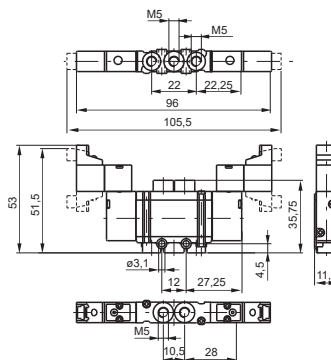
Weight 42 g
Minimum pilot pressure 2 bar

Solenoid - Solenoid

Coding: 2115.52.00.35. **T**

Operational characteristics	
Fluid	Filtered air. No lubrication needed, if applied it shall be continuous
Max. working pressure (bar)	7
Temperature °C	-5 ... +50
Flow rate at 6 bar with $\Delta p=1$ (NI/min)	150
Orifice size (mm)	2.5
Working ports size	M5

VOLTAGE
01 = + 12 V DC 90° conn. with LED
21 = + 12 V DC line conn. with LED
02 = + 24 V DC 90° conn. with LED
22 = + 24 V DC line conn. with LED
11 = + 12 V DC 90° conn. with LED downward
31 = + 12 V DC line conn. with LED downward
12 = + 24 V DC 90° conn. with LED downward
32 = + 24 V DC line conn. with LED downward



Weight 52 g
Minimum pilot pressure 2 bar

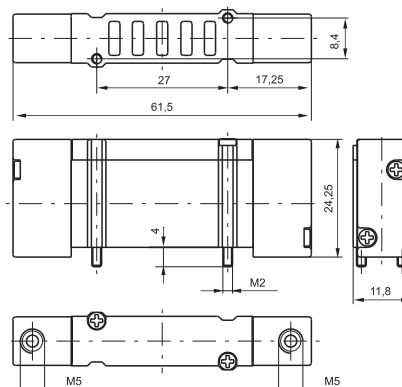
AIR DISTRIBUTION

Pneumatic - Pneumatic 5/3

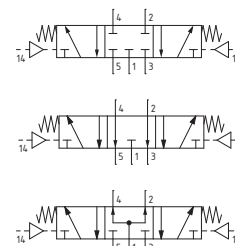
Coding: 2115.53. **F**.18

Operational characteristics	
Fluid	Filtered air. No lubrication needed, if applied it shall be continuous
Max. working pressure (bar)	7
Temperature °C	-5 ... +50
Flow rate at 6 bar with $\Delta p=1$ (Nl/min)	180 (Pressured centres) 130 (Closed centres) 140 (Open centres)
Orifice size (mm)	2.5
Working ports size	M5

FUNCTION	
F	31 = Closed centres
	32 = Open centres
	33 = Pressured centres



Weight 32 g
Minimum pilot pressure 2,5 bar



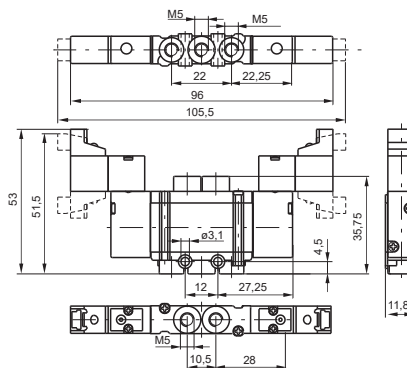
1
AIR DISTRIBUTION

Solenoid - Solenoid 5/3

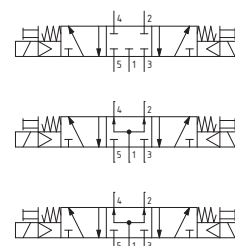
Coding: 2115.53. **F**.35. **T**

Operational characteristics	
Fluid	Filtered air. No lubrication needed, if applied it shall be continuous
Max. working pressure (bar)	7
Temperature °C	-5 ... +50
Flow rate at 6 bar with $\Delta p=1$ (Nl/min)	180 (Pressured centres) 130 (Closed centres) 140 (Open centres)
Orifice size (mm)	2.5
Working ports size	M5

FUNCTION	
F	31 = Closed centres
	32 = Open centres
	33 = Pressured centres
VOLTAGE	
	01 = + 12 V DC 90° conn. with LED
	21 = + 12 V DC line conn. with LED
	02 = + 24 V DC 90° conn. with LED
	22 = + 24 V DC line conn. with LED
	11 = + 12 V DC 90° conn. with LED downward
T	31 = + 12 V DC line conn. with LED downward
	12 = + 24 V DC 90° conn. with LED downward
	32 = + 24 V DC line conn. with LED downward



Weight 54 g
Minimum pilot pressure 2,5 bar



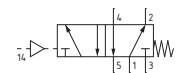
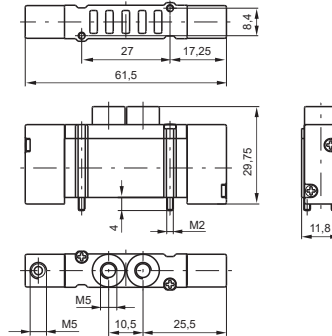


Pneumatic - Spring

Coding: 2135.52.00.19

Operational characteristics

Fluid	Filtered air. No lubrication needed, if applied it shall be continuous
Max. working pressure (bar)	7
Temperature °C	-5 ... +50
Flow rate at 6 bar with $\Delta p=1$ (NI/min)	150
Orifice size (mm)	2.5
Working ports size	M5



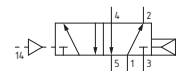
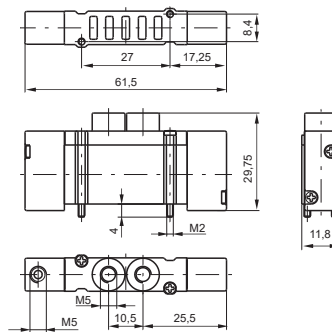
Weight 32 g
Minimum pilot pressure 2 bar

Pneumatic-Differential

Coding: 2135.52.00.16

Operational characteristics

Fluid	Filtered air. No lubrication needed, if applied it shall be continuous
Max. working pressure (bar)	7
Temperature °C	-5 ... +50
Flow rate at 6 bar with $\Delta p=1$ (NI/min)	150
Orifice size (mm)	2.5
Working ports size	M5



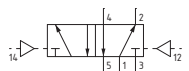
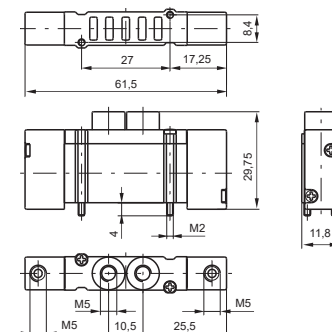
Weight 30 g
Minimum pilot pressure 2 bar

Pneumatic - Pneumatic

Coding: 2135.52.00.18

Operational characteristics

Fluid	Filtered air. No lubrication needed, if applied it shall be continuous
Max. working pressure (bar)	7
Temperature °C	-5 ... +50
Flow rate at 6 bar with $\Delta p=1$ (NI/min)	150
Orifice size (mm)	2.5
Working ports size	M5



Weight 32 g
Minimum pilot pressure 2 bar

1
AIR DISTRIBUTION

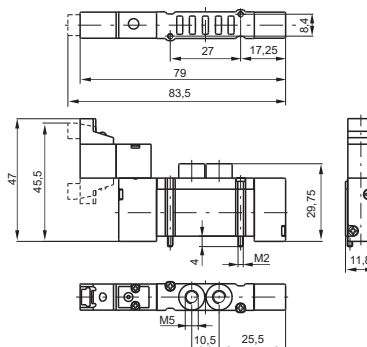
Solenoid - Spring

Coding: 2135.52.00.39. **1**

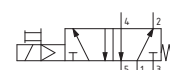
Operational characteristics	
Fluid	Filtered air. No lubrication needed, if applied it shall be continuous
Max. working pressure (bar)	7
Temperature °C	-5 ... +50
Flow rate at 6 bar with $\Delta p=1$ (NI/min)	150
Orifice size (mm)	2.5
Working ports size	M5



Weight 38 g
Minimum pilot pressure 2 bar



VOLTAGE	
01	= + 12 V DC 90° conn. with LED
21	= + 12 V DC line conn. with LED
02	= + 24 V DC 90° conn. with LED
22	= + 24 V DC line conn. with LED
11	= + 12 V DC 90° conn. with LED downward
31	= + 12 V DC line conn. with LED downward
12	= + 24 V DC 90° conn. with LED downward
32	= + 24 V DC line conn. with LED downward
91	= + 12 V DC for integral electrical connections downward
92	= + 24 V DC for integral electrical connections downward



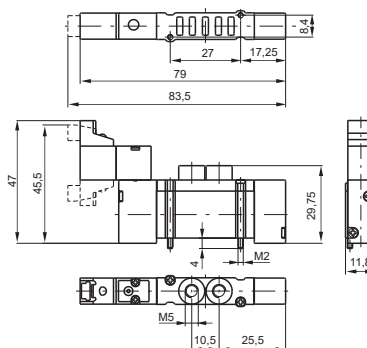
Solenoid - Differential

Coding: 2135.52.00.36. **1**

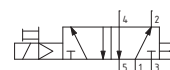
Operational characteristics	
Fluid	Filtered air. No lubrication needed, if applied it shall be continuous
Max. working pressure (bar)	7
Temperature °C	-5 ... +50
Flow rate at 6 bar with $\Delta p=1$ (NI/min)	150
Orifice size (mm)	2.5
Working ports size	M5



Weight 38 g
Minimum pilot pressure 2 bar



VOLTAGE	
01	= + 12 V DC 90° conn. with LED
21	= + 12 V DC line conn. with LED
02	= + 24 V DC 90° conn. with LED
22	= + 24 V DC line conn. with LED
11	= + 12 V DC 90° conn. with LED downward
31	= + 12 V DC line conn. with LED downward
12	= + 24 V DC 90° conn. with LED downward
32	= + 24 V DC line conn. with LED downward
91	= + 12 V DC for integral electrical connections downward
92	= + 24 V DC for integral electrical connections downward



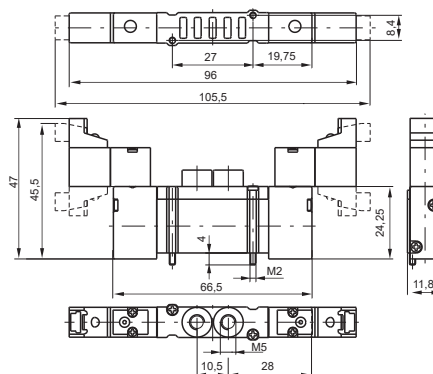
Solenoid - Solenoid

Coding: 2135.52.00.35. **1**

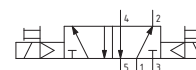
Operational characteristics	
Fluid	Filtered air. No lubrication needed, if applied it shall be continuous
Max. working pressure (bar)	7
Temperature °C	-5 ... +50
Flow rate at 6 bar with $\Delta p=1$ (NI/min)	150
Orifice size (mm)	2.5
Working ports size	M5



Weight 50 g
Minimum pilot pressure 1,5 bar



VOLTAGE	
01	= + 12 V DC 90° conn. with LED
21	= + 12 V DC line conn. with LED
02	= + 24 V DC 90° conn. with LED
22	= + 24 V DC line conn. with LED
11	= + 12 V DC 90° conn. with LED downward
31	= + 12 V DC line conn. with LED downward
12	= + 24 V DC 90° conn. with LED downward
32	= + 24 V DC line conn. with LED downward
91	= + 12 V DC for integral electrical connections downward
92	= + 24 V DC for integral electrical connections downward





Spool type valves and solenoid valves

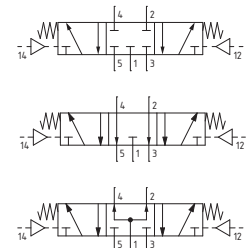
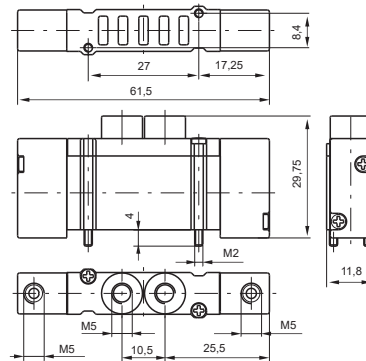
Series 2100 - Size 10mm FLAT

Pneumatic - Pneumatic 5/3

Coding: 2135.53. **F**.18

Operational characteristics	
Fluid	Filtered air. No lubrication needed, if applied it shall be continuous
Max. working pressure (bar)	7
Temperature °C	-5 ... +50
Flow rate at 6 bar with $\Delta p=1$ (Nl/min)	180 (Pressured centres) 130 (Closed centres) 140 (Open centres)
Orifice size (mm)	2.5
Working ports size	M5

FUNCTION	
F	31 = Closed centres
	32 = Open centres
	33 = Pressured centres



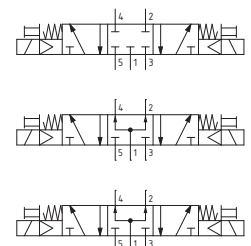
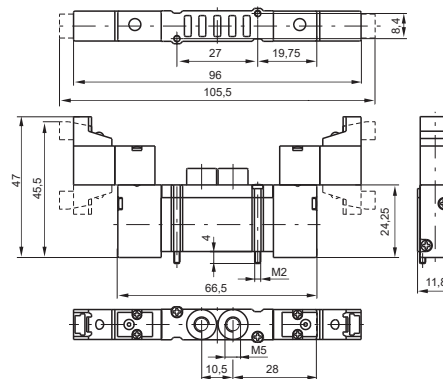
Weight 28 g
Minimum pilot pressure 2 bar

Solenoid - Solenoid 5/3

Coding: 2135.53. **F**.35. **T**

Operational characteristics	
Fluid	Filtered air. No lubrication needed, if applied it shall be continuous
Max. working pressure (bar)	7
Temperature °C	-5 ... +50
Flow rate at 6 bar with $\Delta p=1$ (Nl/min)	180 (Pressured centres) 130 (Closed centres) 140 (Open centres)
Orifice size (mm)	2.5
Working ports size	M5

FUNCTION	
F	31 = Closed centres
	32 = Open centres
	33 = Pressured centres
VOLTAGE	
T	01 = + 12 V DC 90° conn. with LED
	21 = + 12 V DC line conn. with LED
	02 = + 24 V DC 90° conn. with LED
	22 = + 24 V DC line conn. with LED
	11 = + 12 V DC 90° conn. with LED downward
	31 = + 12 V DC line conn. with LED downward
	12 = + 24 V DC 90° conn. with LED downward
	32 = + 24 V DC line conn. with LED downward
	91 = + 12 V DC for integral electrical connections downward
	92 = + 24 V DC for integral electrical connections downward



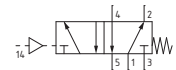
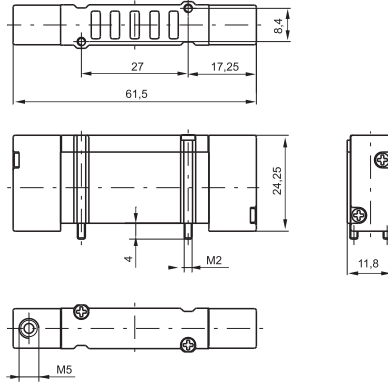
Weight 52 g
Minimum pilot pressure 2,5 bar

1
AIR DISTRIBUTION

Pneumatic - Spring

Coding: 2141.52.00.19

Operational characteristics	
Fluid	Filtered air. No lubrication needed, if applied it shall be continuous
Max. working pressure (bar)	7
Temperature °C	-5 ... +50
Flow rate at 6 bar with $\Delta p=1$ (NI/min)	150
Orifice size (mm)	2.5
Working ports size	M5

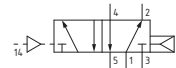
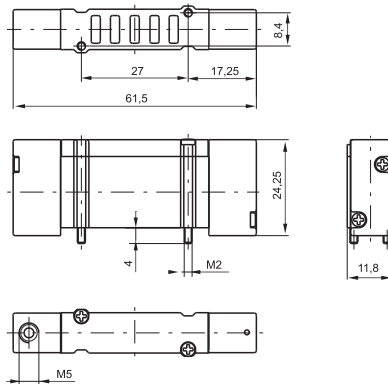


Weight 24 g
Minimum pilot pressure 2 bar

Pneumatic-Differential

Coding: 2141.52.00.16

Operational characteristics	
Fluid	Filtered air. No lubrication needed, if applied it shall be continuous
Max. working pressure (bar)	7
Temperature °C	-5 ... +50
Flow rate at 6 bar with $\Delta p=1$ (NI/min)	150
Orifice size (mm)	2.5
Working ports size	M5

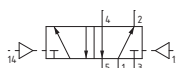
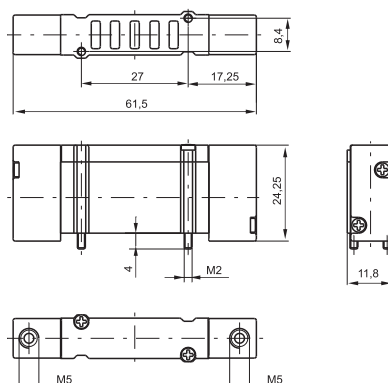


Weight 22 g
Minimum pilot pressure 2 bar

Pneumatic - Pneumatic

Coding: 2141.52.00.18

Operational characteristics	
Fluid	Filtered air. No lubrication needed, if applied it shall be continuous
Max. working pressure (bar)	7
Temperature °C	-5 ... +50
Flow rate at 6 bar with $\Delta p=1$ (NI/min)	150
Orifice size (mm)	2.5
Working ports size	M5



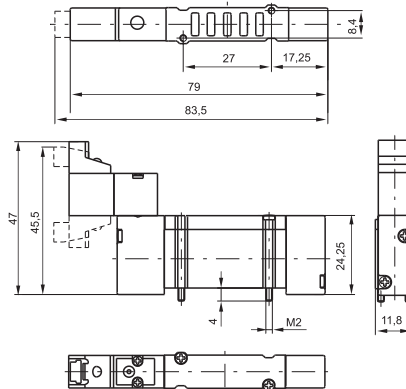
Weight 26 g
Minimum pilot pressure 1,5 bar

Solenoid - Spring

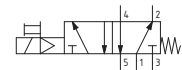
Coding: 2141.52.00.39. **T**

Operational characteristics	
Fluid	Filtered air. No lubrication needed, if applied it shall be continuous
Max. working pressure (bar)	7
Temperature °C	-5 ... +50
Flow rate at 6 bar with $\Delta p=1$ (NI/min)	150
Orifice size (mm)	2.5
Working ports size	M5

VOLTAGE
01 = + 12 V DC 90° conn. with LED
21 = + 12 V DC line conn. with LED
02 = + 24 V DC 90° conn. with LED
22 = + 24 V DC line conn. with LED
11 = + 12 V DC 90° conn. with LED downward
31 = + 12 V DC line conn. with LED downward
12 = + 24 V DC 90° conn. with LED downward
32 = + 24 V DC line conn. with LED downward
91 = + 12 V DC for integral electrical connections downward
92 = + 24 V DC for integral electrical connections downward



Weight 38 g
Minimum pilot pressure 2 bar

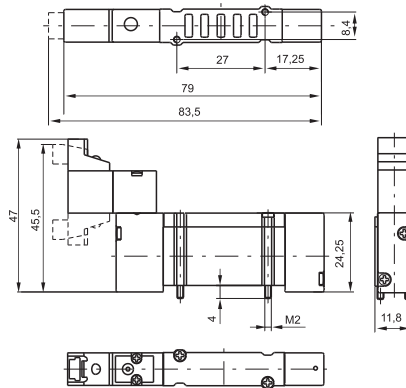


Solenoid - Differential

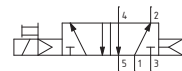
Coding: 2141.52.00.36. **T**

Operational characteristics	
Fluid	Filtered air. No lubrication needed, if applied it shall be continuous
Max. working pressure (bar)	7
Temperature °C	-5 ... +50
Flow rate at 6 bar with $\Delta p=1$ (NI/min)	150
Orifice size (mm)	2.5
Working ports size	M5

VOLTAGE
01 = + 12 V DC 90° conn. with LED
21 = + 12 V DC line conn. with LED
02 = + 24 V DC 90° conn. with LED
22 = + 24 V DC line conn. with LED
11 = + 12 V DC 90° conn. with LED downward
31 = + 12 V DC line conn. with LED downward
12 = + 24 V DC 90° conn. with LED downward
32 = + 24 V DC line conn. with LED downward
91 = + 12 V DC for integral electrical connections downward
92 = + 24 V DC for integral electrical connections downward



Weight 38 g
Minimum pilot pressure 2 bar

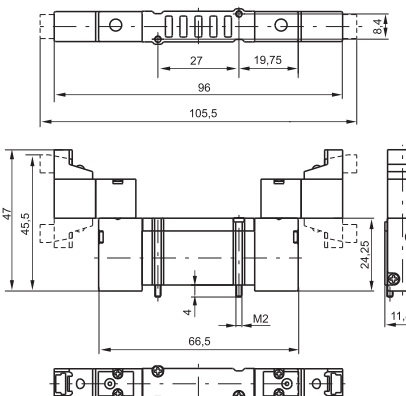


Solenoid - Solenoid

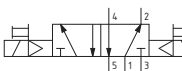
Coding: 2141.52.00.35. **T**

Operational characteristics	
Fluid	Filtered air. No lubrication needed, if applied it shall be continuous
Max. working pressure (bar)	7
Temperature °C	-5 ... +50
Flow rate at 6 bar with $\Delta p=1$ (NI/min)	150
Orifice size (mm)	2.5
Working ports size	M5

VOLTAGE
01 = + 12 V DC 90° conn. with LED
21 = + 12 V DC line conn. with LED
02 = + 24 V DC 90° conn. with LED
22 = + 24 V DC line conn. with LED
11 = + 12 V DC 90° conn. with LED downward
31 = + 12 V DC line conn. with LED downward
12 = + 24 V DC 90° conn. with LED downward
32 = + 24 V DC line conn. with LED downward
91 = + 12 V DC for integral electrical connections downward
92 = + 24 V DC for integral electrical connections downward



Weight 48 g
Minimum pilot pressure 1,5 bar



AIR DISTRIBUTION

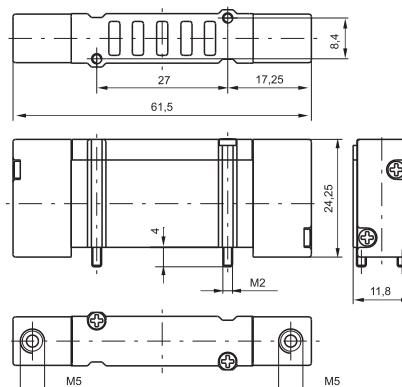
1

Pneumatic - Pneumatic 5/3

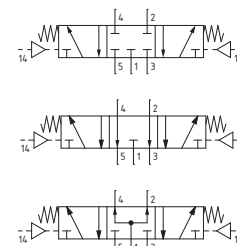
Coding: 2141.53. **F**.18

Operational characteristics	
Fluid	Filtered air. No lubrication needed, if applied it shall be continuous
Max. working pressure (bar)	7
Temperature °C	-5 ... +50
Flow rate at 6 bar with $\Delta p=1$ (Nl/min)	180 (Pressured centres) 130 (Closed centres) 140 (Open centres)
Orifice size (mm)	2.5
Working ports size	M5

FUNCTION	
F	31 = Closed centres
	32 = Open centres
	33 = Pressured centres



Weight 28 g
Minimum pilot pressure 2,5 bar



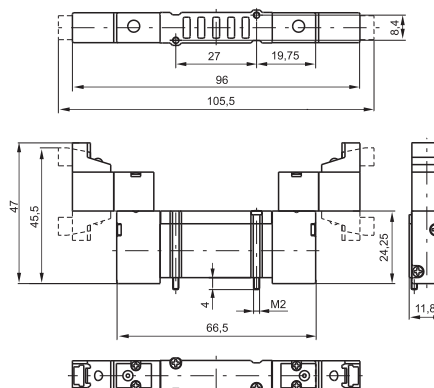
1
AIR DISTRIBUTION

Solenoid - Solenoid 5/3

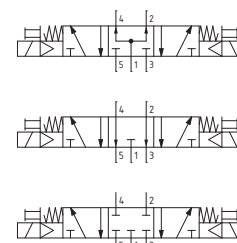
Coding: 2141.53. **F**.35. **T**

Operational characteristics	
Fluid	Filtered air. No lubrication needed, if applied it shall be continuous
Max. working pressure (bar)	7
Temperature °C	-5 ... +50
Flow rate at 6 bar with $\Delta p=1$ (Nl/min)	180 (Pressured centres) 130 (Closed centres) 140 (Open centres)
Orifice size (mm)	2.5
Working ports size	M5

FUNCTION	
F	31 = Closed centres
	32 = Open centres
	33 = Pressured centres
VOLTAGE	
01	+ 12 V DC 90° conn. with LED
21	+ 12 V DC line conn. with LED
02	+ 24 V DC 90° conn. with LED
22	+ 24 V DC line conn. with LED
11	+ 12 V DC 90° conn. with LED downward
31	+ 12 V DC line conn. with LED downward
T	12 = + 24 V DC 90° conn. with LED downward
	32 = + 24 V DC line conn. with LED downward
	91 = + 12 V DC for integral electrical connections downward
	92 = + 24 V DC for integral electrical connections downward

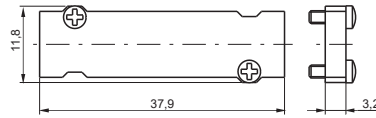


Weight 52 g
Minimum pilot pressure 2,5 bar



► Closing plate

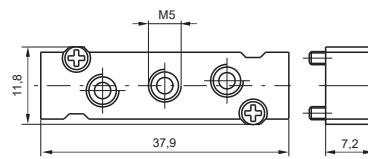
Coding: 2130.00



Weight 7 g

► Intermediate air intake

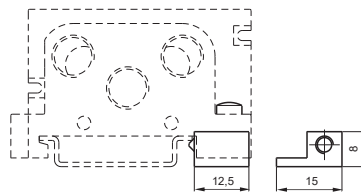
Coding: 2130.10



Weight 12 g
to be assembled instead of a valve

► DIN rail adapter

Coding: 2130.16



Weight 6 g

► Modular base cartridge

Coding: 2100.▼



VERSION
031M = Ø4 tube cartridge
▼ 033M = M5 cartridges
034M = M7x1 cartridges
035M = lock cartridge
036M = Ø4 tube cartridge

Weight 5 g

► Diaphragm plug

Coding: 2130.17

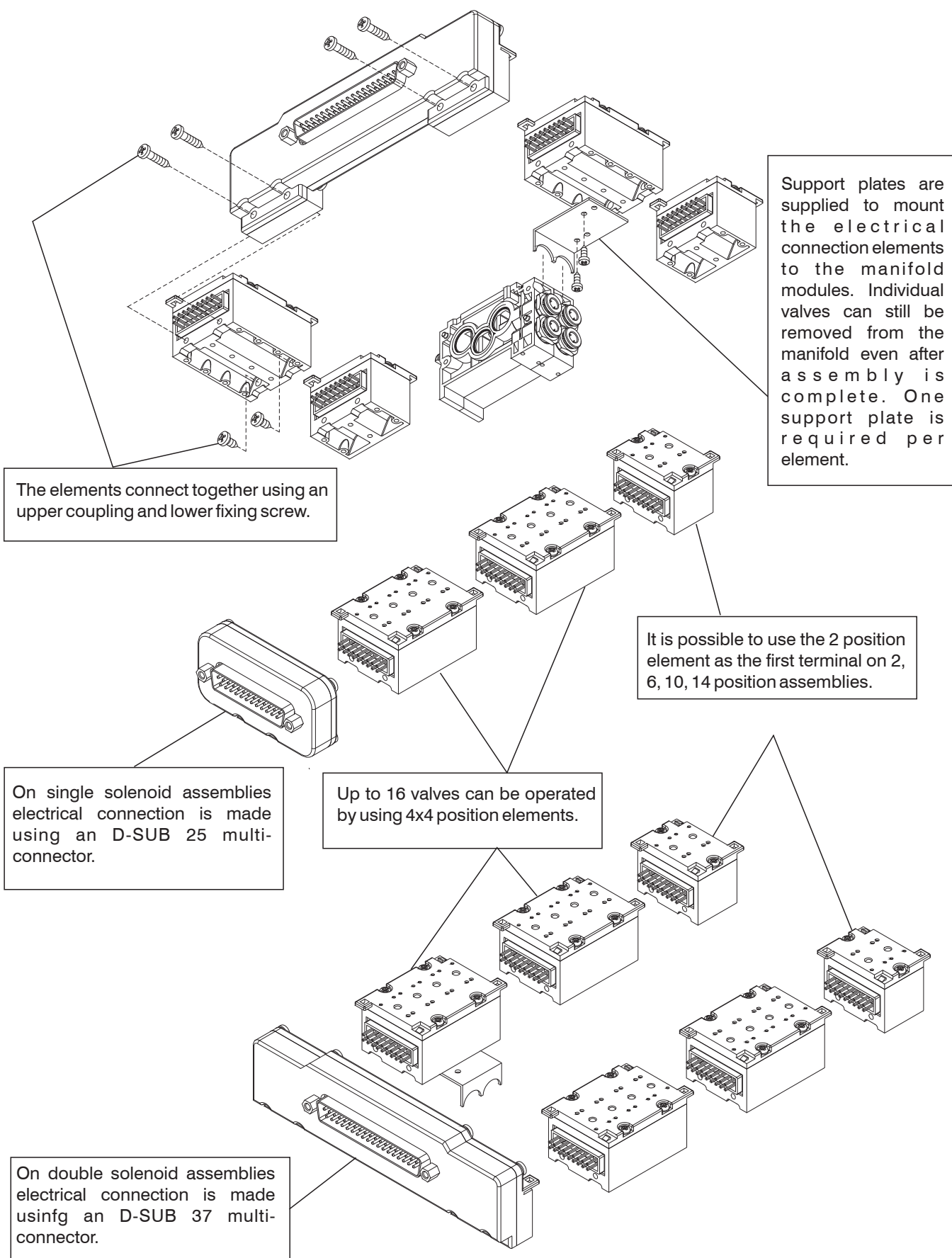


Weight 6 g

The integral electrical design for the series 2100 valve is extremely flexible, allowing the production of pre-wired solenoid valve manifolds, the configuration of which can be determined at the point of assembly. The 24 VDC, 12 VDC (equivalent PNP) modules are available with 2 or 4 positions. The system assembled is designed for an IP40 - IP65 protection.

Coil type 91 or 92 is required for the multipin electrical connection (see valve ordering codes).

1
AIR DISTRIBUTION



Support plates are supplied to mount the electrical connection elements to the manifold modules. Individual valves can still be removed from the manifold even after assembly is complete. One support plate is required per element.

The elements connect together using an upper coupling and lower fixing screw.

It is possible to use the 2 position element as the first terminal on 2, 6, 10, 14 position assemblies.

On single solenoid assemblies electrical connection is made using an D-SUB 25 multi-connector.

Up to 16 valves can be operated by using 4x4 position elements.

On double solenoid assemblies electrical connection is made using an D-SUB 37 multi-connector.

▶ **Module for connections, 2 positions**



Coding: 2100.02.Ⓥ

VERSION
00 = Left IP40-PNP
02 = Left IP40-PNP with protection diode
10 = Left IP65-PNP
12 = Left IP65-PNP with protection diode
Ⓥ 01 = Right IP40-PNP
03 = Right IP40-PNP with protection diode
11 = Right IP65-PNP
13 = Right IP65-PNP with protection diode

Weight 35 g

Note: with protection diode only direct current (V DC) is available

▶ **Module for connections, 4 positions**



Coding: 2100.04.Ⓥ

VERSION
00 = Left IP40-PNP
02 = Left IP40-PNP with protection diode
10 = Left IP65-PNP
12 = Left IP65-PNP with protection diode
Ⓥ 01 = Right IP40-PNP
03 = Right IP40-PNP with protection diode
11 = Right IP65-PNP
13 = Right IP65-PNP with protection diode

Weight 35 g

Note: with protection diode only direct current (V DC) is available

▶ **Connectors 25 poles**



Coding: 2100.25.10

Weight 40 g

The IP65 protection is obtained by IP65 Pneumax cable

▶ **Connectors 37 poles**



Coding: 2100.37.10

Weight 120 g

The IP65 protection is obtained by IP65 Pneumax cable

▶ **Plug**



Coding: 2100.00

Weight 4 g

▶ **FLAT support plate**



Coding: 2130.50

Weight 5 g

▶ **In line cable complete with connector, IP40**



Coding: 2400.ⓐ.Ⓛ.00

CONNECTOR
ⓐ 25 = 25 poles
37 = 37 poles
CABLE LENGTH
Ⓛ 03 = 3 meters
05 = 5 meters
10 = 10 meters

▶ **Cable complete with connector, 25 Poles, IP65**



Coding: 2300.25.Ⓛ.ⓐ

CABLE LENGTH
Ⓛ 03 = 3 meters
05 = 5 meters
10 = 10 meters
CONNECTOR
ⓐ 10 = Stand alone
90 = 90° Angle

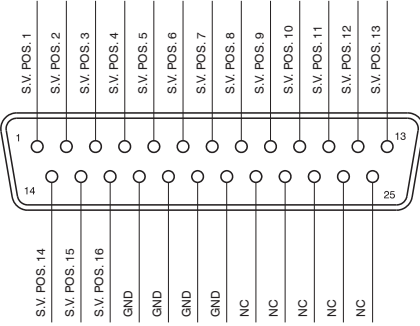
▶ **Cable complete with connector, 37 Poles, IP65**



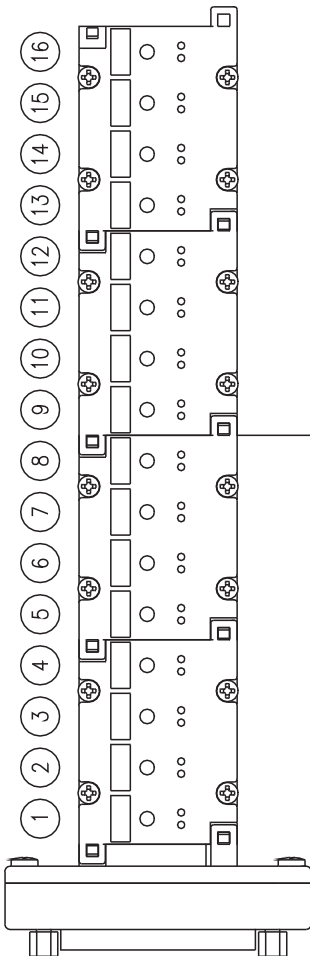
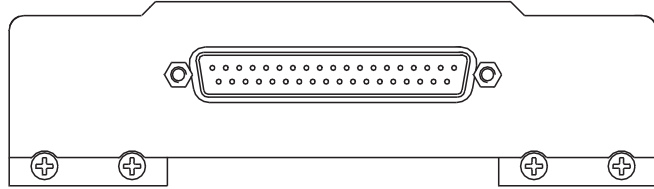
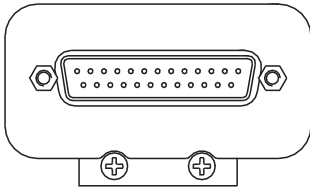
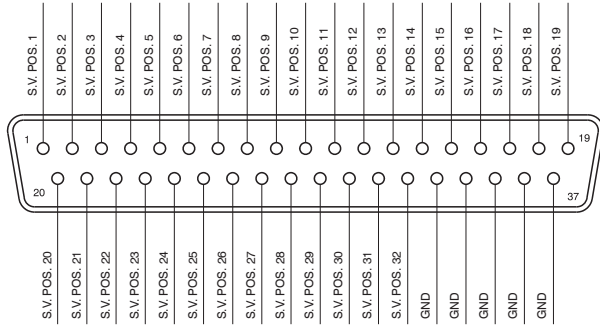
Coding: 2400.37.Ⓛ.ⓐ

CABLE LENGTH
Ⓛ 03 = 3 meters
05 = 5 meters
10 = 10 meters
CONNECTOR
ⓐ 10 = Stand alone
90 = 90° Angle

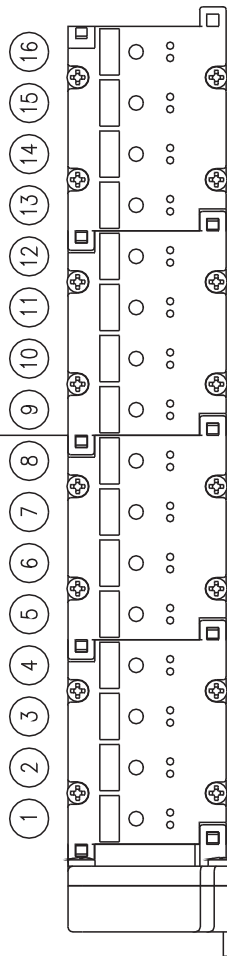
SUB-D 25 POLES CONNECTOR



SUB-D 37 POLES CONNECTOR



Left modules



Right modules

