



Series 2400

This solenoid valves series has been developed to meet requirements for electronically controlled pneumatic systems and / or serial control systems already used in all manufacturing sectors. They have been designed to be easily assembled into groups or manifolds and include integral electrical connection to facilitate simple and speedy integration into a control system. The 2400 series comprises a range of products classified according to the body size of 18 mm divided into 3 types "LINE", "FLAT" and "VDMA". The 10mm. and 18 mm. 24 VDC range of valves includes a range of accessories for the production of manifolded valve assemblies with integral electrical connections. Modules are available in two or four station variants for flexibility and are supplied to IP40 or alternatively IP65 environmental protection.

Construction characteristics

Central body	Extruded aluminium bar with chemical nickel treatment and PTFE (polytetrafluorethylene)
Connection plates	Zinc alloy
Spool seals	Oil resistant nitrile rubber-HNBR
Springs	AISI 302 stainless steel
Operators	Technopolymer
Pistons	Technopolymer
Spools	Aluminium 2011

Use and maintenance

The average life of the solenoid valve exceeds 50.000.000 cycles when used under optimum conditions. Adequate lubrication reduces seals wear, just as proper filtering of supply air prevents the build-up of dirt that can cause malfunction. Ensure the valve is used within our recommended criteria for pressure and temperature. In dirty or dusty environments, the exhaust ports should be protected. Seals kits are available for repairs. Repairs must be made exclusively by specialized personnel.

Ordering codes for miniature solenoid valves

The 15 mm. miniature solenoid valve with 1,1 mm. orifice has been selected for piloting this series of valves (see Series 300). This results in low response times and reduced power consumption. The valve can be supplied with the coil upward or downward (multipolar connections) depending on the application.

Codes are as follows:

Coil upward code

- 01 = miniature sol. + 12 V DC
- 02 = miniature sol. + 24 V DC
- 05 = miniature sol. + 24 V AC
- 06 = miniature sol. 110 V AC
- 07 = miniature sol. 230 V AC
- 08 = miniature sol. + 24 V DC 1W
- 09 = miniature sol. + 24 V DC Earth faston

Coil downward code

- 11 = miniature sol. + 12 V DC
- 12 = miniature sol. + 24 V DC
- 15 = miniature sol. + 24 V AC
- 16 = miniature sol. 110 V AC
- 17 = miniature sol. 230 V AC
- 18 = miniature sol. + 24 V DC 1W
- 19 = miniature sol. + 24 V DC Earth faston

	Well-ried component	<ul style="list-style-type: none"> - The product is a well-ried product for a safety-related application according to ISO 13849-1. - The relevant basic and well-ried safety principles according ISO 13849-2 for this product are fulfilled. - The suitability of the product for a precise application must be verified and confirmed by the user.
B_{10d}	50.000.000	

Miniature solenoid homologated are available (see Series 300).



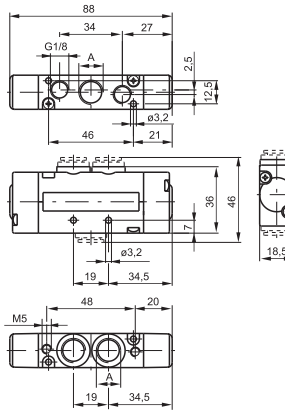
Spool type valves and solenoid valves
Series 2400 - Size 18mm LINE

Pneumatic - Spring

Coding: 241 **A**.52.00.19

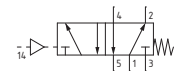
Operational characteristics	
Fluid	Filtered air. No lubrication needed, if applied it shall be continuous
Max. working pressure (bar)	10
Minimum pilot pressure (bar)	2
Temperature °C	-5 ... +50
Flow rate at 6 bar with $\Delta p=1$ (NI/min)	800
Orifice size (mm)	7
Pilot ports size	M5

CONNECTION A	
1	G1/4"
5	G1/8"
6	Quick fitting tube $\varnothing 6$
8	Quick fitting tube $\varnothing 8$



Weight 155 g

For dimension "A" see ordering code

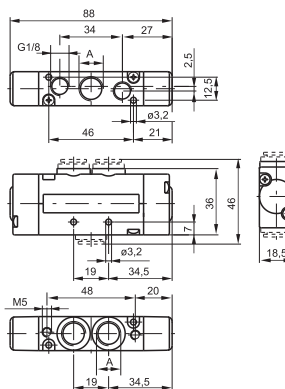


Pneumatic-Differential

Coding: 241 **A**.52.00.16

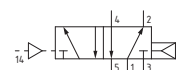
Operational characteristics	
Fluid	Filtered air. No lubrication needed, if applied it shall be continuous
Max. working pressure (bar)	10
Minimum pilot pressure (bar)	2
Temperature °C	-5 ... +50
Flow rate at 6 bar with $\Delta p=1$ (NI/min)	800
Orifice size (mm)	7
Pilot ports size	M5

CONNECTION A	
1	G1/4"
5	G1/8"
6	Quick fitting tube $\varnothing 6$
8	Quick fitting tube $\varnothing 8$



Weight 155 g

For dimension "A" see ordering code



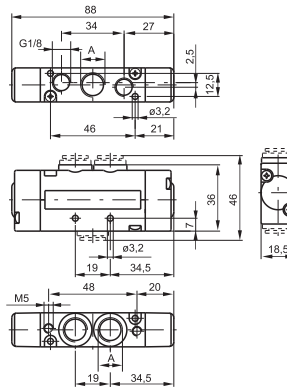
1
AIR DISTRIBUTION

Pneumatic - Differential (External)

Coding: 241 **A**.52.00.17

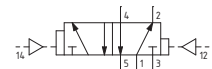
Operational characteristics	
Fluid	Filtered air. No lubrication needed, if applied it shall be continuous
Max. working pressure (bar)	10
Minimum pilot pressure (bar)	2
Temperature °C	-5 ... +50
Flow rate at 6 bar with Δp=1 (NI/min)	800
Orifice size (mm)	7
Pilot ports size	M5

CONNECTION A	
1	G1/4"
5	G1/8"
6	Quick fitting tube Ø6
8	Quick fitting tube Ø8



Weight 155 g

For dimension "A" see ordering code



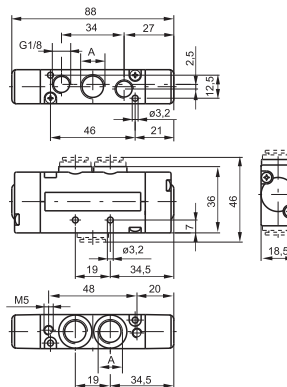
1
AIR DISTRIBUTION

Pneumatic - Pneumatic

Coding: 241 **A**.52.00.18

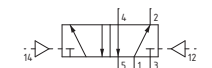
Operational characteristics	
Fluid	Filtered air. No lubrication needed, if applied it shall be continuous
Max. working pressure (bar)	10
Minimum pilot pressure (bar)	1.5
Temperature °C	-5 ... +50
Flow rate at 6 bar with Δp=1 (NI/min)	800
Orifice size (mm)	7
Pilot ports size	M5

CONNECTION A	
1	G1/4"
5	G1/8"
6	Quick fitting tube Ø6
8	Quick fitting tube Ø8



Weight 155 g

For dimension "A" see ordering code





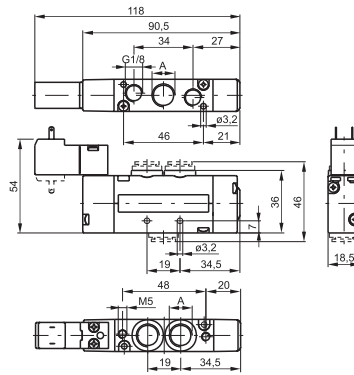
1 AIR DISTRIBUTION

Solenoid-Spring/Differential

Coding: 241 **A**.52.00.**V**.**T**

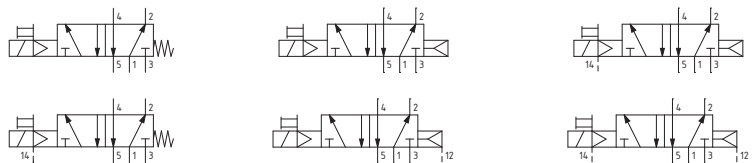
Operational characteristics	
Fluid	Filtered air. No lubrication needed, if applied it shall be continuous
Max. working pressure (bar)	10
Minimum pilot pressure (bar)	2
Temperature °C	-5 ... +50
Flow rate at 6 bar with Δp=1 (NI/min)	800
Orifice size (mm)	7
Pilot ports size	M5

CONNECTION A	
A	1 = G1/4"
	5 = G1/8"
	6 = Quick fitting tube Ø6
	8 = Quick fitting tube Ø8
VERSION	
V	39 = Solenoid-Spring
	29 = Solenoid external-Spring
	36 = Solenoid-Differential
	37 = Solenoid-Differential external
	26 = Solenoid external-Differential
	27 = Solenoid external-Differential external
VOLTAGE	
T	01 = + 12 V DC
	02 = + 24 V DC
	05 = + 24 V AC
	06 = 110 V AC
	07 = 230 V AC
	08 = + 24 V DC 1W
	09 = + 24 V DC Earth faston
	11 = + 12 V DC downward
	12 = + 24 V DC downward
	15 = + 24 V AC downward
	16 = 110 V AC downward
	17 = 230 V AC downward
	18 = + 24 V DC 1W downward
	19 = + 24 V DC Earth faston downward



For dimension "A" see ordering code

Weight 195 g

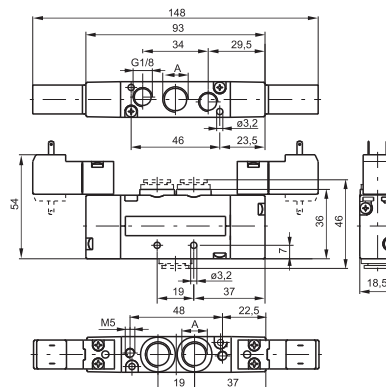


Solenoid - Solenoid

Coding: 241 **A**.52.00.**V**.**T**

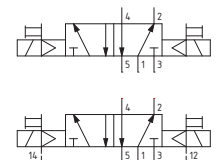
Operational characteristics	
Fluid	Filtered air. No lubrication needed, if applied it shall be continuous
Max. working pressure (bar)	10
Minimum pilot pressure (bar)	1.5
Temperature °C	-5 ... +50
Flow rate at 6 bar with Δp=1 (NI/min)	800
Orifice size (mm)	7
Pilot ports size	M5

CONNECTION A	
A	1 = G1/4"
	5 = G1/8"
	6 = Quick fitting tube Ø6
	8 = Quick fitting tube Ø8
VERSION	
V	35 = Solenoid-Solenoid
	24 = Solenoid external-Solenoid external
VOLTAGE	
T	01 = + 12 V DC
	02 = + 24 V DC
	05 = + 24 V AC
	06 = 110 V AC
	07 = 230 V AC
	08 = + 24 V DC 1W
	09 = + 24 V DC Earth faston
	11 = + 12 V DC downward
	12 = + 24 V DC downward
	15 = + 24 V AC downward
	16 = 110 V AC downward
	17 = 230 V AC downward
	18 = + 24 V DC 1W downward
	19 = + 24 V DC Earth faston downward



For dimension "A" see ordering code

Weight 225 g

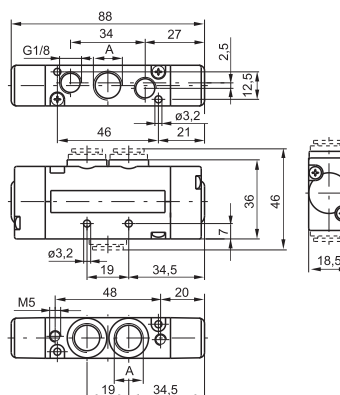


Pneumatic-Pneumatic 5/3

Coding: 241 **A**.53.**F**.18

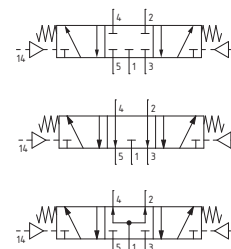
Operational characteristics	
Fluid	Filtered air. No lubrication needed, if applied it shall be continuous
Max. working pressure (bar)	10
Minimum pilot pressure (bar)	3
Temperature °C	-5 ... +50
Flow rate at 6 bar with $\Delta p=1$ (NI/min)	650
Orifice size (mm)	7
Pilot ports size	M5

CONNECTION A	
1	= G1/4"
5	= G1/8"
6	= Quick fitting tube $\varnothing 6$
8	= Quick fitting tube $\varnothing 8$
FUNCTION	
31	= Closed centres
32	= Open centres
33	= Pressured centres



Weight 165 g

For dimension "A" see ordering code



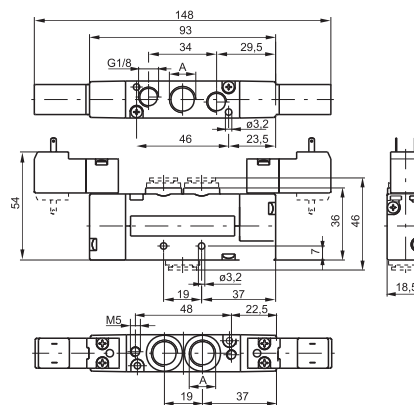
1
AIR DISTRIBUTION

Solenoid - Solenoid 5/3

Coding: 241 **A**.53.**F**.**V**.**T**

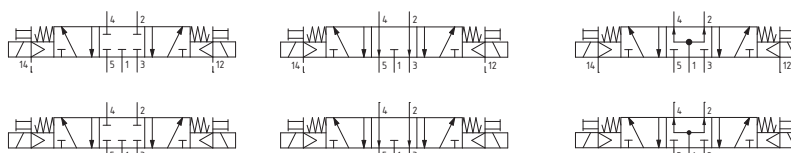
Operational characteristics	
Fluid	Filtered air. No lubrication needed, if applied it shall be continuous
Max. working pressure (bar)	10
Minimum pilot pressure (bar)	3
Temperature °C	-5 ... +50
Flow rate at 6 bar with $\Delta p=1$ (NI/min)	650
Orifice size (mm)	7
Pilot ports size	M5

CONNECTION A	
1	= G1/4"
5	= G1/8"
6	= Quick fitting tube $\varnothing 6$
8	= Quick fitting tube $\varnothing 8$
FUNCTION	
31	= Closed centres
32	= Open centres
33	= Pressured centres
VERSION	
24	= Solenoid external-Solenoid external
35	= Solenoid-Solenoid
VOLTAGE	
01	= + 12 V DC
02	= + 24 V DC
05	= + 24 V AC
06	= 110 V AC
07	= 230 V AC
08	= + 24 V DC 1W
09	= + 24 V DC Earth faston
11	= + 12 V DC downward
12	= + 24 V DC downward
15	= + 24 V AC downward
16	= 110 V AC downward
17	= 230 V AC downward
18	= + 24 V DC 1W downward
19	= + 24 V DC Earth faston downward



Weight 235 g

For dimension "A" see ordering code





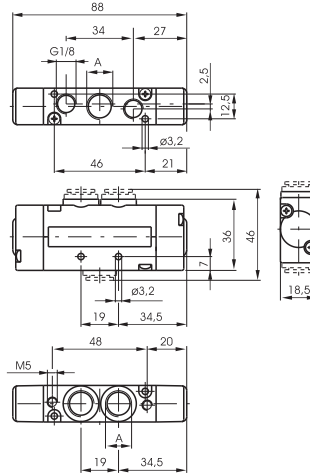
Pneumatic-Pneumatic 2 x 3/2

Coding: 241 **A**.62.**F**.18

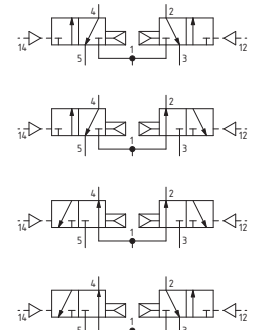
Operational characteristics	
Fluid	Filtered air. No lubrication needed, if applied it shall be continuous
Max. working pressure (bar)	10
Pilot pressure (bar)	$\geq 1,5 + (0,2 \times \text{Inlet pressure})$
Temperature °C	-5 ... +50
Flow rate at 6 bar with $\Delta p=1$ (NI/min)	450
Orifice size (mm)	7

CONNECTION A	
A	1 = G1/4"
	5 = G1/8"
	6 = Quick fitting tube Ø6
	8 = Quick fitting tube Ø8
FUNCTION	
F	44 = 2 Coils 3/2 NC
	45 = 1 Coil 3/2 NC (14) + 1 Coil 3/2 NO (12)
	55 = 2 Coils 3/2 NO
	54 = 1 Coil 3/2 NO (14) + 1 Coil 3/2 NC (12)

"Example: if inlet pressure is set at 5bar then pilot pressure must be at least $Pp=1,5+(0,2*5)=2,5\text{bar}$ "



For dimension "A" see ordering code



Weight 170 g

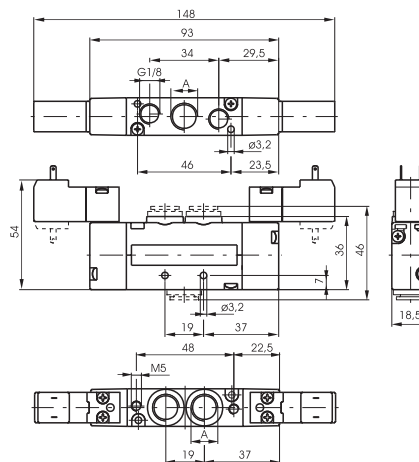
Solenoid-Solenoid 2 x 3/2

Coding: 241 **A**.62.**F**.35.**T**

Operational characteristics	
Fluid	Filtered air. No lubrication needed, if applied it shall be continuous
Max. working pressure (bar)	10
Pilot pressure (bar)	$\geq 1,5 + (0,2 \times \text{Inlet pressure})$
Temperature °C	-5 ... +50
Flow rate at 6 bar with $\Delta p=1$ (NI/min)	450
Orifice size (mm)	7

CONNECTION A	
A	1 = G1/4"
	5 = G1/8"
	6 = Quick fitting tube Ø6
	8 = Quick fitting tube Ø8
FUNCTION	
F	44 = 2 Coils 3/2 NC
	45 = 1 Coil 3/2 NC (14) + 1 Coil 3/2 NO (12)
	55 = 2 Coils 3/2 NO
	54 = 1 Coil 3/2 NO (14) + 1 Coil 3/2 NC (12)
VOLTAGE	
T	01 = + 12 V DC
	02 = + 24 V DC
	05 = + 24 V AC
	06 = 110 V AC
	07 = 230 V AC
	08 = + 24 V DC 1W
	09 = + 24 V DC Earth faston
	11 = + 12 V DC downward
	12 = + 24 V DC downward
	15 = + 24 V AC downward
	16 = 110 V AC downward
	17 = 230 V AC downward
	18 = + 24 V DC 1W downward
	19 = + 24 V DC Earth faston downward

"Example: if inlet pressure is set at 5bar then pilot pressure must be at least $Pp=1,5+(0,2*5)=2,5\text{bar}$ "



For dimension "A" see ordering code

Weight 250 g



AIR DISTRIBUTION

Pneumatic - Spring

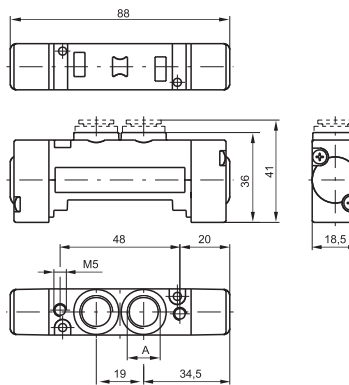
Coding: 243A.52.00.19

Operational characteristics	
Fluid	Filtered air. No lubrication needed, if applied it shall be continuous
Max. working pressure (bar)	10
Minimum pilot pressure (bar)	2
Temperature °C	-5 ... +50
Flow rate at 6 bar with $\Delta p=1$ (NI/min)	800
Orifice size (mm)	7
Pilot ports size	M5

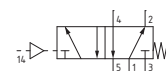
CONNECTION A	
1	= G1/4"
5	= G1/8"
6	= Quick fitting tube $\varnothing 6$
8	= Quick fitting tube $\varnothing 8$



Weight 105 g



For dimension "A" see ordering code



Pneumatic-Differential

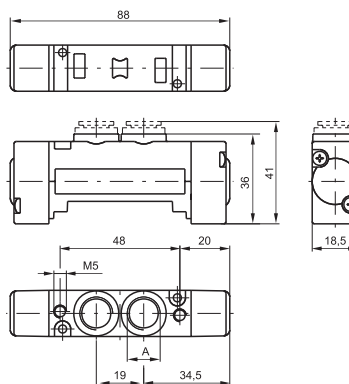
Coding: 243A.52.00.16

Operational characteristics	
Fluid	Filtered air. No lubrication needed, if applied it shall be continuous
Max. working pressure (bar)	10
Minimum pilot pressure (bar)	2
Temperature °C	-5 ... +50
Flow rate at 6 bar with $\Delta p=1$ (NI/min)	800
Orifice size (mm)	7
Pilot ports size	M5

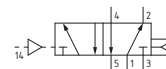
CONNECTION A	
1	= G1/4"
5	= G1/8"
6	= Quick fitting tube $\varnothing 6$
8	= Quick fitting tube $\varnothing 8$



Weight 105 g



For dimension "A" see ordering code



Pneumatic - Differential (External)

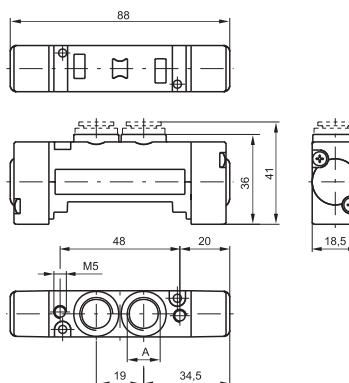
Coding: 243A.52.00.17

Operational characteristics	
Fluid	Filtered air. No lubrication needed, if applied it shall be continuous
Max. working pressure (bar)	10
Minimum pilot pressure (bar)	2
Temperature °C	-5 ... +50
Flow rate at 6 bar with $\Delta p=1$ (NI/min)	800
Orifice size (mm)	7
Pilot ports size	M5

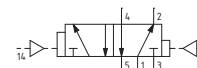
CONNECTION A	
1	= G1/4"
5	= G1/8"
6	= Quick fitting tube $\varnothing 6$
8	= Quick fitting tube $\varnothing 8$



Weight 105 g



For dimension "A" see ordering code



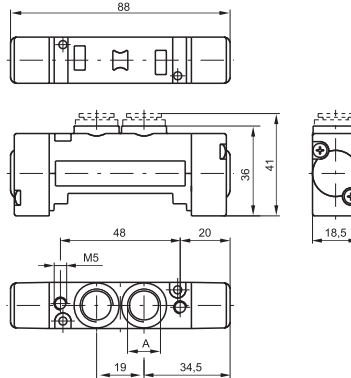


Pneumatic - Pneumatic

Coding: 243 **A**.52.00.18

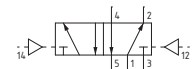
Operational characteristics	
Fluid	Filtered air. No lubrication needed, if applied it shall be continuous
Max. working pressure (bar)	10
Minimum pilot pressure (bar)	1,5
Temperature °C	-5 ... +50
Flow rate at 6 bar with Δp=1 (NI/min)	800
Orifice size (mm)	7
Pilot ports size	M5

CONNECTION A	
1	= G1/4"
5	= G1/8"
6	= Quick fitting tube Ø6
8	= Quick fitting tube Ø8



Weight 105 g

For dimension "A" see ordering code

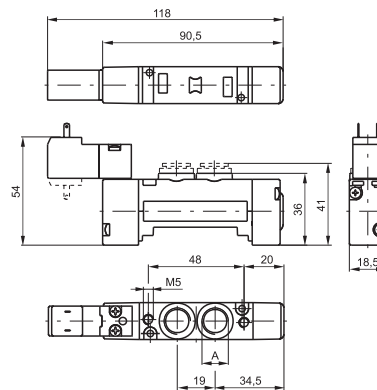


Solenoid-Spring/Differential

Coding: 243 **A**.52.00. **V**. **T**

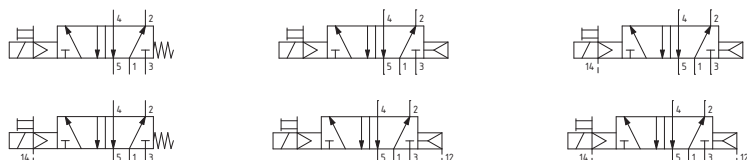
Operational characteristics	
Fluid	Filtered air. No lubrication needed, if applied it shall be continuous
Max. working pressure (bar)	10
Minimum pilot pressure (bar)	2
Temperature °C	-5 ... +50
Flow rate at 6 bar with Δp=1 (NI/min)	800
Orifice size (mm)	7
Pilot ports size	M5

CONNECTION A	
1	= G1/4"
5	= G1/8"
6	= Quick fitting tube Ø6
8	= Quick fitting tube Ø8
VERSION	
39	= Solenoid-Spring
29	= Solenoid external-Spring
36	= Solenoid-Differential
37	= Solenoid-Differential external
26	= Solenoid external-Differential
27	= Solenoid external-Differential external
VOLTAGE	
01	= + 12 VDC
02	= + 24 V DC
05	= + 24 V AC
06	= 110 V AC
07	= 230 V AC
08	= + 24 V DC 1W
09	= + 24 V DC Earth faston
11	= + 12 VDC downward
12	= + 24 VDC downward
15	= + 24 V AC downward
16	= 110 V AC downward
17	= 230 V AC downward
18	= + 24 VDC 1W downward
19	= + 24 V DC Earth faston downward



For dimension "A" see ordering code

Weight 140 g



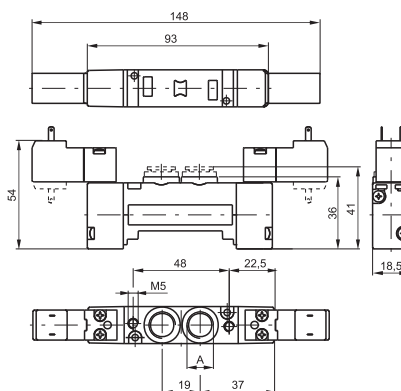
AIR DISTRIBUTION

Solenoid - Solenoid

Coding: 243(A).52.00(V).T

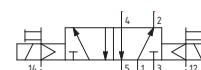
Operational characteristics	
Fluid	Filtered air. No lubrication needed, if applied it shall be continuous
Max. working pressure (bar)	10
Minimum pilot pressure (bar)	1.5
Temperature °C	-5 ... +50
Flow rate at 6 bar with $\Delta p=1$ (NI/min)	800
Orifice size (mm)	7
Pilot ports size	M5

A	CONNECTION A
	1 = G1/4"
	5 = G1/8"
	6 = Quick fitting tube $\varnothing 6$
V	8 = Quick fitting tube $\varnothing 8$
	VERSION
T	35 = Solenoid-Solenoid
	24 = Solenoid external-Solenoid external
	VOLTAGE
	01 = + 12 V DC
	02 = + 24 V DC
	05 = + 24 V AC
	06 = 110 V AC
	07 = 230 V AC
	08 = + 24 V DC 1W
	09 = + 24 V DC Earth faston
	11 = + 12 V DC downward
	12 = + 24 V DC downward
	15 = + 24 V AC downward
	16 = 110 V AC downward
	17 = 230 V AC downward
	18 = + 24 V DC 1W downward
	19 = + 24 V DC Earth faston downward



Weight 175 g

For dimension "A" see ordering code



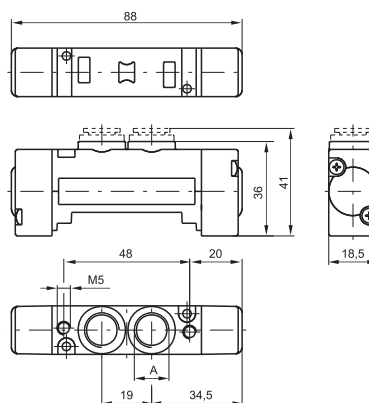
1
AIR DISTRIBUTION

Pneumatic-Pneumatic 5/3

Coding: 243(A).53(F).18

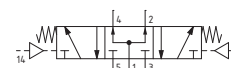
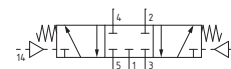
Operational characteristics	
Fluid	Filtered air. No lubrication needed, if applied it shall be continuous
Max. working pressure (bar)	10
Minimum pilot pressure (bar)	3
Temperature °C	-5 ... +50
Flow rate at 6 bar with $\Delta p=1$ (NI/min)	650
Orifice size (mm)	7
Pilot ports size	M5

A	CONNECTION A
	1 = G1/4"
	5 = G1/8"
	6 = Quick fitting tube $\varnothing 6$
F	8 = Quick fitting tube $\varnothing 8$
	FUNCTION
	31 = Closed centres
F	32 = Open centres
	33 = Pressured centres



Weight 115 g

For dimension "A" see ordering code





Spool type valves and solenoid valves

Series 2400 - Size 18mm FLAT

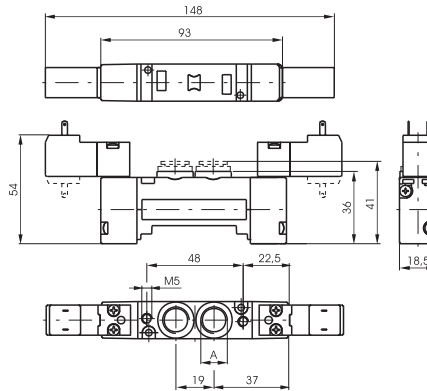
1 AIR DISTRIBUTION

Solenoid - Solenoid 5/3

Coding: 243 **A**.53. **F**. **V**. **T**

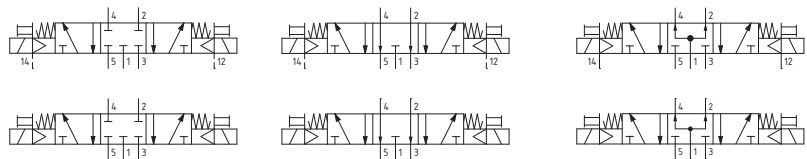
Operational characteristics	
Fluid	Filtered air. No lubrication needed, if applied it shall be continuous
Max. working pressure (bar)	10
Minimum pilot pressure (bar)	3
Temperature °C	-5 ... +50
Flow rate at 6 bar with $\Delta p=1$ (NI/min)	650
Orifice size (mm)	7
Pilot ports size	M5

CONNECTION A	
A	1 = G1/4"
	5 = G1/8"
	6 = Quick fitting tube Ø6
	8 = Quick fitting tube Ø8
FUNCTION	
F	31 = Closed centres
	32 = Open centres
	33 = Pressured centres
VERSION	
V	24 = Solenoid external-Solenoid external
	35 = Solenoid-Solenoid
VOLTAGE	
T	01 = + 12 V DC
	02 = + 24 V DC
	05 = + 24 V AC
	06 = 110 V AC
	07 = 230 V AC
	08 = + 24 V DC 1W
	09 = + 24 V DC Earth faston
	11 = + 12 V DC downward
	12 = + 24 V DC downward
	15 = + 24 V AC downward
	16 = 110 V AC downward
	17 = 230 V AC downward
	18 = + 24 V DC 1W downward
	19 = + 24 V DC Earth faston downward



Weight 185 g

For dimension "A" see ordering code



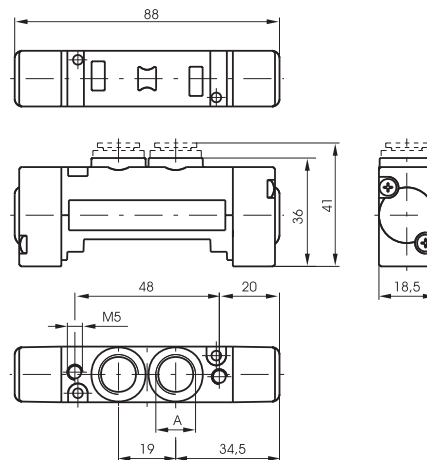
Pneumatic-Pneumatic 2 x 3/2

Coding: 243 **A**.62. **F**.18

Operational characteristics	
Fluid	Filtered air. No lubrication needed, if applied it shall be continuous
Max. working pressure (bar)	10
Pilot pressure (bar)	$\geq 1,5 + (0,2 \times \text{Inlet pressure})$
Temperature °C	-5 ... +50
Flow rate at 6 bar with $\Delta p=1$ (NI/min)	450
Orifice size (mm)	7

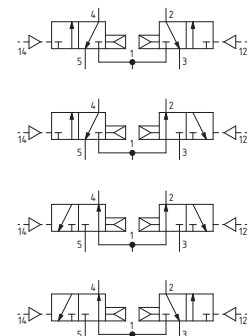
CONNECTION A	
A	1 = G1/4"
	5 = G1/8"
	6 = Quick fitting tube Ø6
	8 = Quick fitting tube Ø8
FUNCTION	
F	44 = 2 Coils 3/2 NC
	45 = 1 Coil 3/2 NC (14) + 1 Coil 3/2 NO (12)
	55 = 2 Coils 3/2 NO
	54 = 1 Coil 3/2 NO (14) + 1 Coil 3/2 NC (12)

"Example: if inlet pressure is set at 5bar then pilot pressure must be at least $Pp=1,5+(0,2*5)=2,5bar$ "



Weight 110 g

For dimension "A" see ordering code

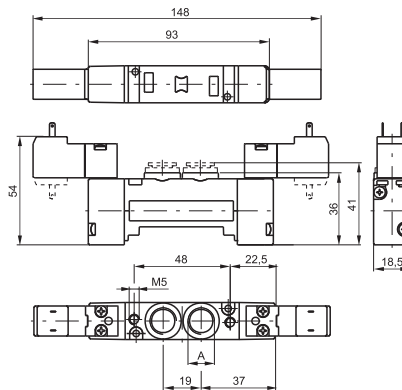


Solenoid-Solenoid 2 x 3/2

Coding: 243 **A**. 62. **F**. 35. **T**

Operational characteristics	
Fluid	Filtered air. No lubrication needed, if applied it shall be continuous
Max. working pressure (bar)	10
Pilot pressure (bar)	$\geq 1,5 + (0,2 \times \text{Inlet pressure})$
Temperature °C	-5 ... +50
Flow rate at 6 bar with $\Delta p=1$ (NI/min)	450
Orifice size (mm)	7

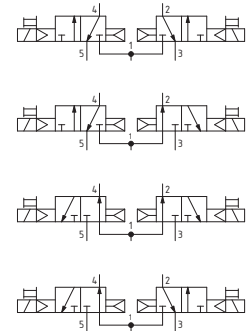
"Example: if inlet pressure is set at 5bar then pilot pressure must be at least $P_p=1,5+(0,2*5)=2,5\text{bar}$ "



Weight 190 g

For dimension 'A' see ordering code

A	CONNECTION A
	1 = G1/4"
	5 = G1/8"
F	6 = Quick fitting tube Ø6
	8 = Quick fitting tube Ø8
	FUNCTION
T	44 = 2 Coils 3/2 NC
	45 = 1 Coil 3/2 NC (14) + 1 Coil 3/2 NO (12)
	55 = 2 Coils 3/2 NO
	54 = 1 Coil 3/2 NO (14) + 1 Coil 3/2 NC (12)
	VOLTAGE
	01 = + 12 V DC
	02 = + 24 V DC
	05 = + 24 V AC
	06 = 110 V AC
	07 = 230 V AC
08 = + 24 V DC 1W	
09 = + 24 V DC Earth faston	
11 = + 12 V DC downward	
12 = + 24 V DC downward	
15 = + 24 V AC downward	
16 = 110 V AC downward	
17 = 230 V AC downward	
18 = + 24 V DC 1W downward	
19 = + 24 V DC Earth faston downward	



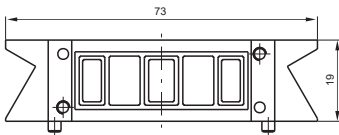
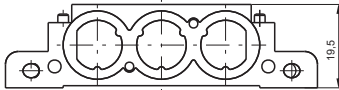
1
AIR DISTRIBUTION

Modular base

Coding: 2430.0



VERSION	
01	Modular base
06	Supply and exhaust closed
07	Supply closed
08	Exhaust closed

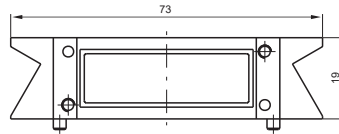
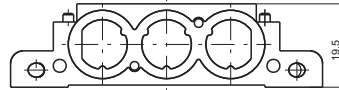


Weight 85 g

2430.0

Blank base

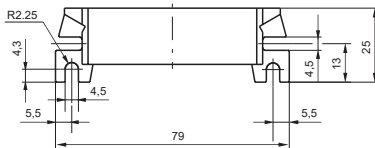
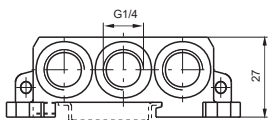
Coding: 2430.05



Weight 85 g

Right inlet base

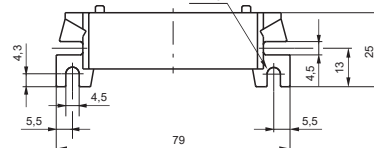
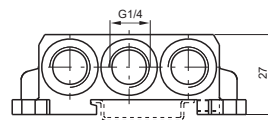
Coding: 2430.02



Weight 120 g

Left inlet base

Coding: 2430.03



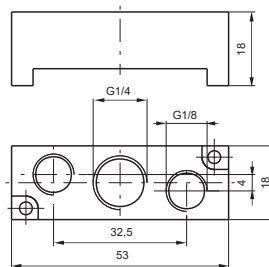
Weight 125 g

Intermediate air intake

Coding: 2430.10

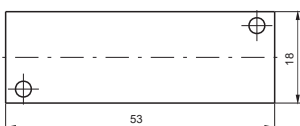
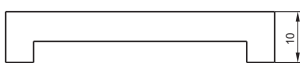


Weight 30 g
to be assembled instead of a valve



Closing plate

Coding: 2430.00



Weight 20 g

Diaphragm plug

Coding: 2430.17



Weight 5 g

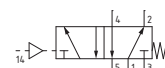
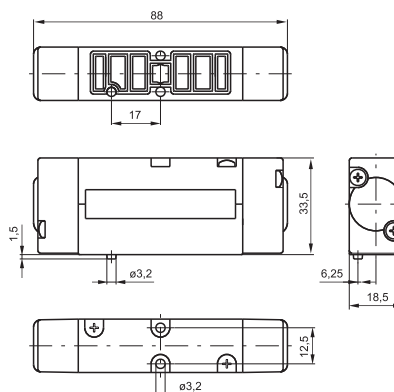
Pneumatic - Spring

Coding: 2445.52.00.19

Operational characteristics	
Fluid	Filtered air. No lubrication needed, if applied it shall be continuous
Max. working pressure (bar)	10
Minimum pilot pressure (bar)	2
Temperature °C	-5 ... +50
Flow rate at 6 bar with $\Delta p=1$ (NI/min)	550
Orifice size (mm)	5



Weight 155 g



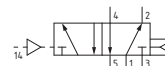
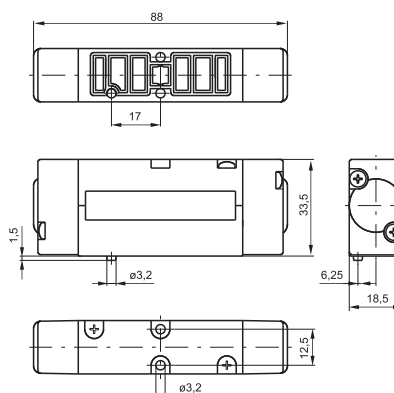
Pneumatic-Differential

Coding: 2445.52.00.16

Operational characteristics	
Fluid	Filtered air. No lubrication needed, if applied it shall be continuous
Max. working pressure (bar)	10
Minimum pilot pressure (bar)	2
Temperature °C	-5 ... +50
Flow rate at 6 bar with $\Delta p=1$ (NI/min)	550
Orifice size (mm)	5



Weight 155 g



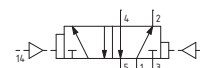
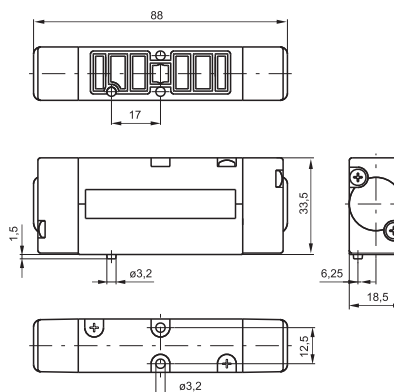
Pneumatic - Differential (External)

Coding: 2445.52.00.17

Operational characteristics	
Fluid	Filtered air. No lubrication needed, if applied it shall be continuous
Max. working pressure (bar)	10
Minimum pilot pressure (bar)	2
Temperature °C	-5 ... +50
Flow rate at 6 bar with $\Delta p=1$ (NI/min)	550
Orifice size (mm)	5



Weight 155 g



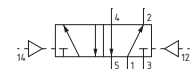
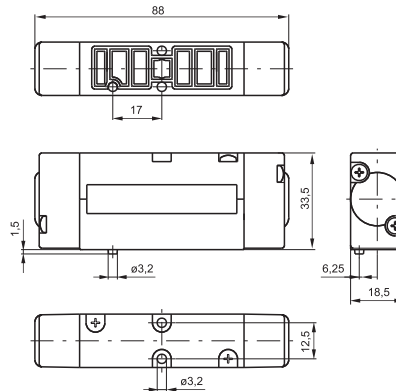


Pneumatic - Pneumatic

Coding: 2445.52.00.18

Operational characteristics

Fluid	Filtered air. No lubrication needed, if applied it shall be continuous
Max. working pressure (bar)	10
Minimum pilot pressure (bar)	1,5
Temperature °C	-5 ... +50
Flow rate at 6 bar with $\Delta p=1$ (NI/min)	550
Orifice size (mm)	5



Weight 155 g

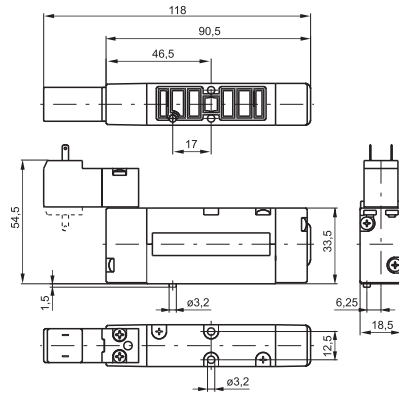
1
AIR DISTRIBUTION

Solenoid-Spring/Differential

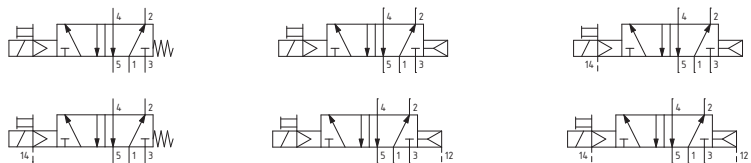
Coding: 244C.52.00.V.T

Operational characteristics	
Fluid	Filtered air. No lubrication needed, if applied it shall be continuous
Max. working pressure (bar)	10
Minimum pilot pressure (bar)	2
Temperature °C	-5 ... +50
Flow rate at 6 bar with Δp=1 (NI/min)	550
Orifice size (mm)	5

C	TYPE ELECTROPILOT EXHAUST 1 = on base (only for self feeding valves) 5 = on pilot (for all version)
V	VERSION 39 = Solenoid-Spring 29 = Solenoid external-Spring 36 = Solenoid-Differential 37 = Solenoid-Differential external 26 = Solenoid external-Differential 27 = Solenoid external-Differential external
T	VOLTAGE 01 = + 12 V DC 02 = + 24 V DC 05 = + 24 V AC 06 = 110 V AC 07 = 230 V AC 08 = + 24 V DC 1W 09 = + 24 V DC Earth faston 11 = + 12 V DC downward 12 = + 24 V DC downward 15 = + 24 V AC downward 16 = 110 V AC downward 17 = 230 V AC downward 18 = + 24 V DC 1W downward 19 = + 24 V DC Earth faston downward



Weight 190 g



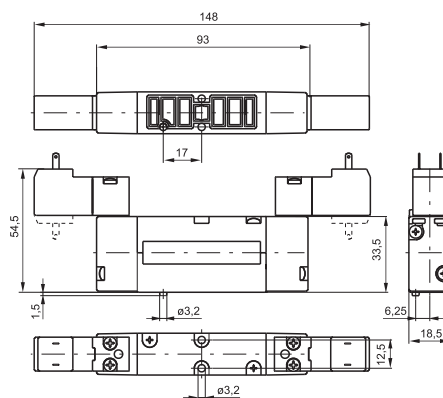
1
AIR DISTRIBUTION

Solenoid - Solenoid

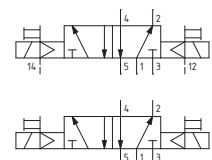
Coding: 244C.52.00.V.T

Operational characteristics	
Fluid	Filtered air. No lubrication needed, if applied it shall be continuous
Max. working pressure (bar)	10
Minimum pilot pressure (bar)	1.5
Temperature °C	-5 ... +50
Flow rate at 6 bar with Δp=1 (NI/min)	550
Orifice size (mm)	5

C	TYPE ELECTROPILOT EXHAUST 1 = on base (only for self feeding valves) 5 = on pilot (for all version)
V	VERSION 24 = Solenoid external-Solenoid external 35 = Solenoid-Solenoid
T	VOLTAGE 01 = + 12 V DC 02 = + 24 V DC 05 = + 24 V AC 06 = 110 V AC 07 = 230 V AC 08 = + 24 V DC 1W 09 = + 24 V DC Earth faston 11 = + 12 V DC downward 12 = + 24 V DC downward 15 = + 24 V AC downward 16 = 110 V AC downward 17 = 230 V AC downward 18 = + 24 V DC 1W downward 19 = + 24 V DC Earth faston downward



Weight 225 g





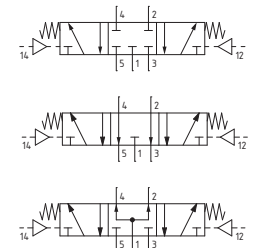
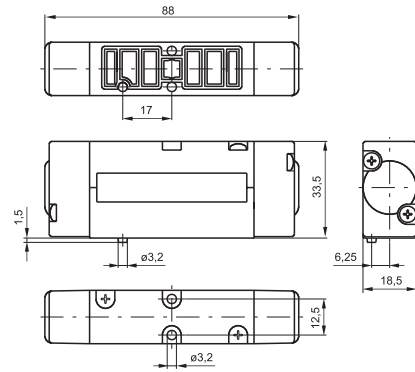
1 AIR DISTRIBUTION

Pneumatic-Pneumatic 5/3

Coding: 244[Ⓒ].53.[Ⓕ].18

Operational characteristics	
Fluid	Filtered air. No lubrication needed, if applied it shall be continuous
Max. working pressure (bar)	10
Minimum pilot pressure (bar)	3
Temperature °C	-5 ... +50
Flow rate at 6 bar with Δp=1 (NI/min)	550
Orifice size (mm)	5

Ⓒ	TYPE ELECTROPILOT EXHAUST
	1 = on base (only for self feeding valves)
	5 = on pilot (for all version)
Ⓕ	FUNCTION
	31 = Closed centres
	32 = Open centres
	33 = Pressured centres



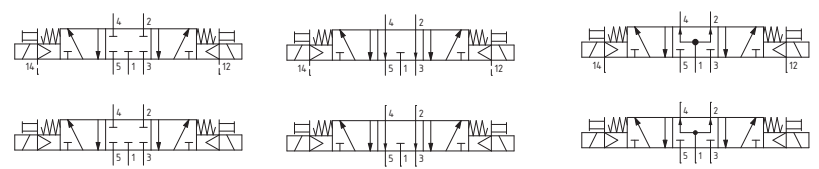
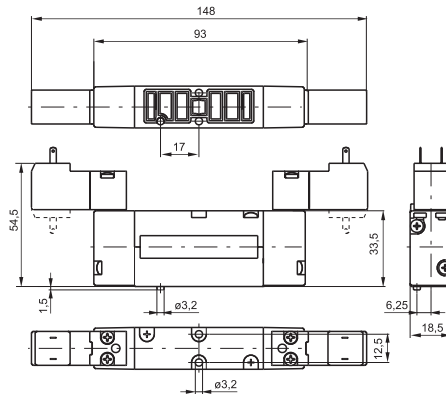
Weight 165 g

Solenoid - Solenoid 5/3

Coding: 244[Ⓒ].53.[Ⓕ].[Ⓗ].[Ⓗ].[Ⓗ]

Operational characteristics	
Fluid	Filtered air. No lubrication needed, if applied it shall be continuous
Max. working pressure (bar)	10
Minimum pilot pressure (bar)	3
Temperature °C	-5 ... +50
Flow rate at 6 bar with Δp=1 (NI/min)	550
Orifice size (mm)	5

Ⓒ	TYPE ELECTROPILOT EXHAUST
	1 = on base (only for self feeding valves)
	5 = on pilot (for all version)
Ⓕ	FUNCTION
	31 = Closed centres
	32 = Open centres
	33 = Pressured centres
Ⓗ	VERSION
	24 = Solenoid external-Solenoid external
	35 = Solenoid-Solenoid
Ⓗ	VOLTAGE
	01 = + 12 V DC
	02 = + 24 V DC
	05 = + 24 V AC
	06 = 110 V AC
	07 = 230 V AC
	08 = + 24 V DC 1W
	09 = + 24 V DC Earth faston
	11 = + 12 V DC downward
	12 = + 24 V DC downward
	15 = + 24 V AC downward
16 = 110 V AC downward	
17 = 230 V AC downward	
18 = + 24 V DC 1W downward	
19 = + 24 V DC Earth faston downward	



Weight 235 g

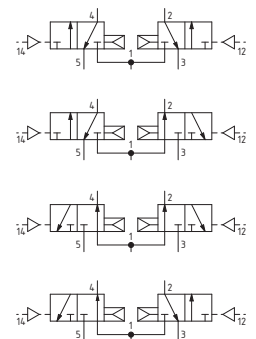
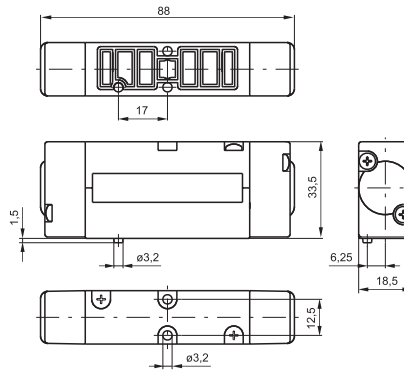
Pneumatic-Pneumatic 2 x 3/2

Coding: 2445.62. **F**.18

Operational characteristics	
Fluid	Filtered air. No lubrication needed, if applied it shall be continuous
Max. working pressure (bar)	10
Pilot pressure (bar)	$\geq 1,5 + (0,2 \times \text{Inlet pressure})$
Temperature °C	-5 ... +50
Flow rate at 6 bar with $\Delta p=1$ (NI/min)	450
Orifice size (mm)	5

FUNCTION	
F	44 = 2 Coils 3/2 NC
	45 = 1 Coil 3/2 NC (14) + 1 Coil 3/2 NO (12)
	55 = 2 Coils 3/2 NO
	54 = 1 Coil 3/2 NO (14) + 1 Coil 3/2 NC (12)

"Example: if inlet pressure is set at 5bar then pilot pressure must be at least $P_p=1,5+(0,2*5)=2,5\text{bar}$ "



Weight 170 g

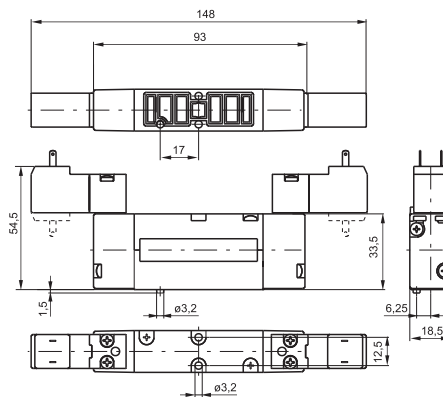
Solenoid-Solenoid 2 x 3/2

Coding: 2445.62. **F**.35. **T**

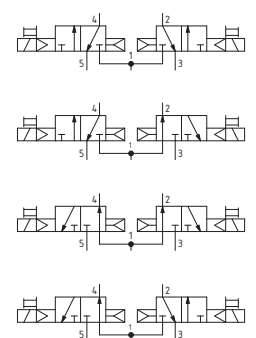
Operational characteristics	
Fluid	Filtered air. No lubrication needed, if applied it shall be continuous
Max. working pressure (bar)	10
Pilot pressure (bar)	$\geq 1,5 + (0,2 \times \text{Inlet pressure})$
Temperature °C	-5 ... +50
Flow rate at 6 bar with $\Delta p=1$ (NI/min)	450
Orifice size (mm)	5

FUNCTION	
F	44 = 2 Coils 3/2 NC
	45 = 1 Coil 3/2 NC (14) + 1 Coil 3/2 NO (12)
	55 = 2 Coils 3/2 NO
	54 = 1 Coil 3/2 NO (14) + 1 Coil 3/2 NC (12)

"Example: if inlet pressure is set at 5bar then pilot pressure must be at least $P_p=1,5+(0,2*5)=2,5\text{bar}$ "

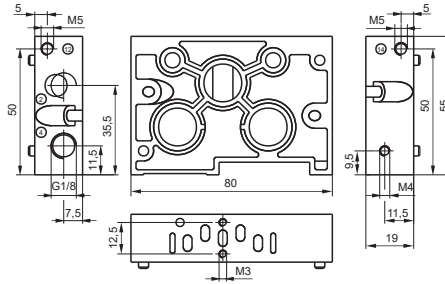


VOLTAGE	
T	01 = + 12 V DC
	02 = + 24 V DC
	05 = + 24 V AC
	06 = 110 V AC
	07 = 230 V AC
	08 = + 24 V DC 1W
	09 = + 24 V DC Earth faston
	11 = + 12 V DC downward
	12 = + 24 V DC downward
	15 = + 24 V AC downward
	16 = 110 V AC downward
	17 = 230 V AC downward
	18 = + 24 V DC 1W downward
	19 = + 24 V DC Earth faston downward



Weight 250 g

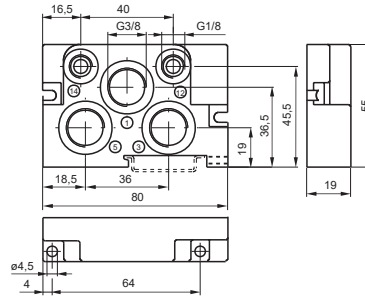
► **Modular base**



Coding: 2440.01

VERSION	
01	Modular base
11	Base for single separate inlet

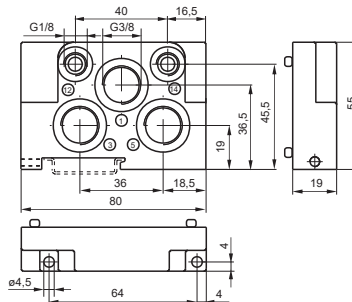
► **Right inlet base**



Coding: 2440.02

Weight 110 g

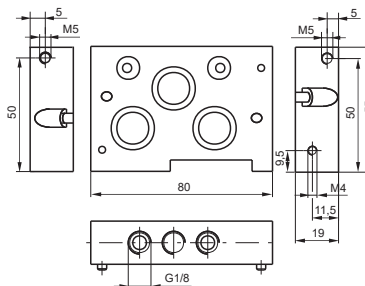
► **Left inlet base**



Coding: 2440.03

Weight 110 g

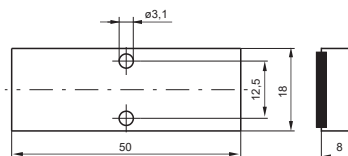
► **Intermediate air intake**



Coding: 2440.10

Weight 185 g

► **Closing plate**



Coding: 2440.00

Weight 25 g

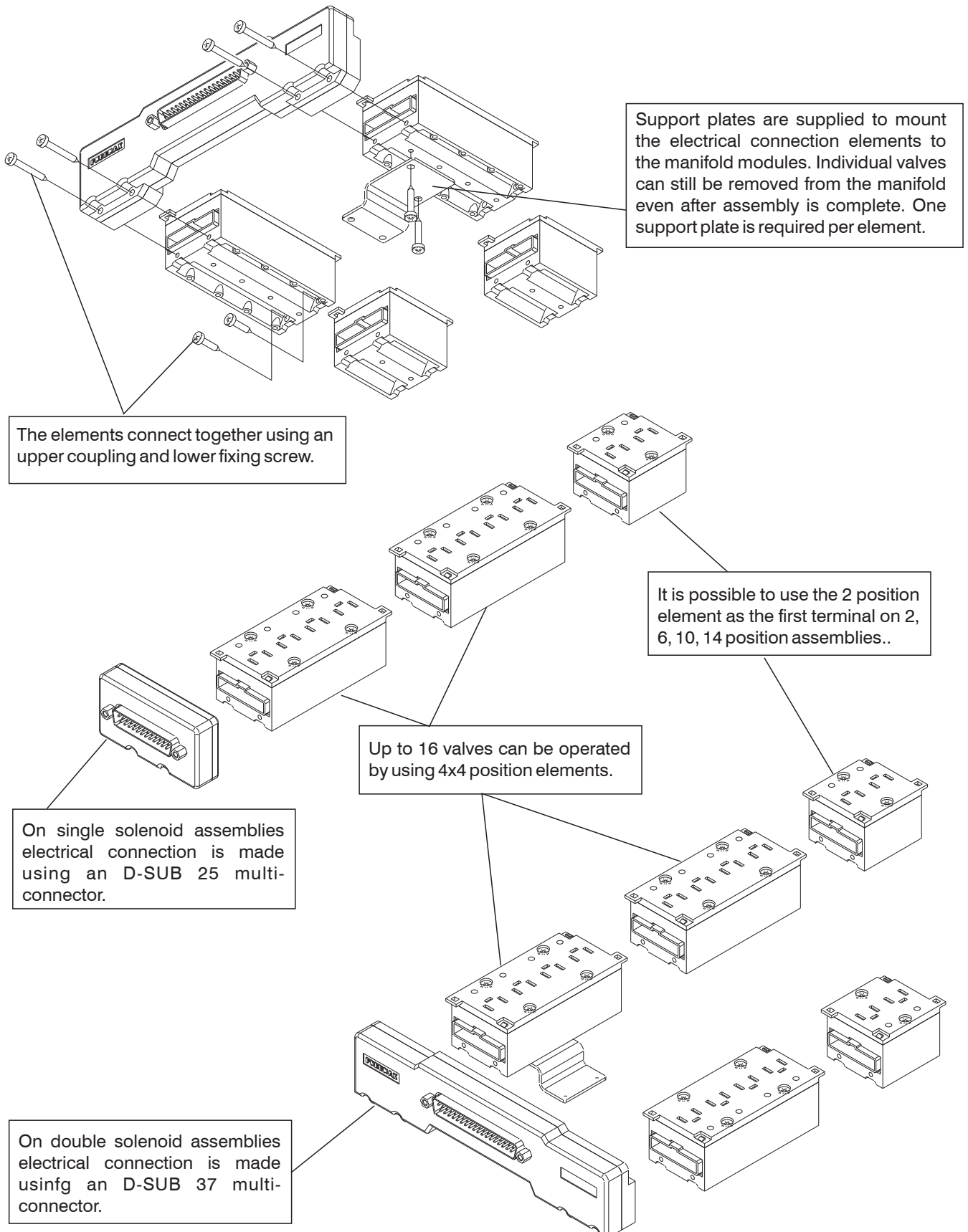
► **Diaphragm plug**



Coding: 2440.17

The integral electrical design for the series 2400 valve is extremely flexible, allowing the production of pre-wired solenoid valve manifolds, the configuration of which can be determined at the point of assembly. The 24 VDC, 12 VDC (equivalent PNP) and 24 VAC* modules are available with 2 or 4 positions. The system assembled is designed for an IP40 protection. IP65 is available on request.

* Attention : If the working tension is 24 VAC DO NOT using modules with protection diode





1 AIR DISTRIBUTION

▶ **Module for connections, 2 positions**



Coding: 2400.02. **V**

VERSION
00 = Left IP40-PNP
02 = Left IP40-PNP with protection diode
10 = Left IP65-PNP
12 = Left IP65-PNP with protection diode
V 01 = Right IP40-PNP
03 = Right IP40-PNP with protection diode
11 = Right IP65-PNP
13 = Right IP65-PNP with protection diode

Weight 30 g
Note: with protection diode only direct current (V DC) is available

▶ **Module for connections, 4 positions**



Coding: 2400.04. **V**

VERSION
00 = Left IP40-PNP
02 = Left IP40-PNP with protection diode
10 = Left IP65-PNP
12 = Left IP65-PNP with protection diode
V 01 = Right IP40-PNP
03 = Right IP40-PNP with protection diode
11 = Right IP65-PNP
13 = Right IP65-PNP with protection diode

Weight 50 g
Note: with protection diode only direct current (V DC) is available

▶ **Connectors 25 poles**



Coding: 2400.25.10

Weight 40 g
The IP65 protection is obtained by IP65 Pneumax cable

▶ **Connectors 37 poles**



Coding: 2400.37.10

Weight 120 g
The IP65 protection is obtained by IP65 Pneumax cable

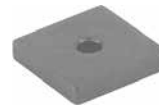
▶ **Plug**



Coding: 2400.00

Weight 5 g

▶ **Closing plate electrical positions**



Coding: 2400.15.00

Weight 2 g

▶ **VDMA support plate**



Coding: 2440.50

Weight 20 g

▶ **FLAT support plate**



Coding: 2430.50

Weight 20 g

▶ **4 positions box with 25 contacts connector**



Coding: 2400.04.25

Weight 65 g

▶ **15mm male connector with 2 metres cable**



Coding: 2400.15.02

Weight 98 g

▶ **In line cable complete with connector, IP40**



Coding: 2400. **C**. **L**. 00

CONNECTOR
C 25 = 25 pins
37 = 37 Pins
CABLE LENGTH
L 03 = 3 meters
05 = 5 meters
10 = 10 meters

▶ **Cable complete with connector, 25 Poles, IP65**



Coding: 2300.25. **L**. **C**

CABLE LENGTH
L 03 = 3 meters
05 = 5 meters
10 = 10 meters
CONNECTOR
C 10 = Stand alone
90 = 90° Angle

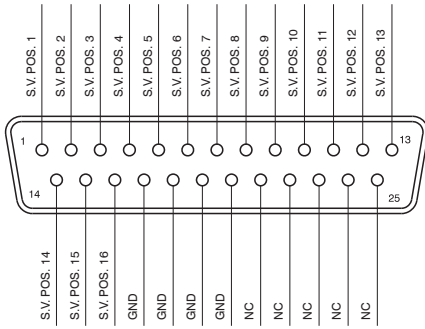
▶ **Cable complete with connector, 37 Poles, IP65**



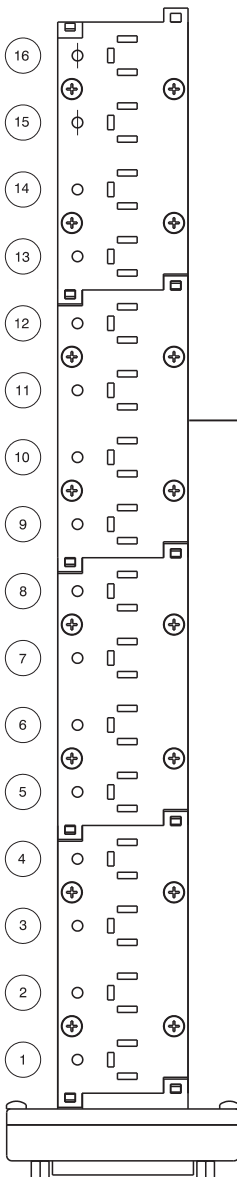
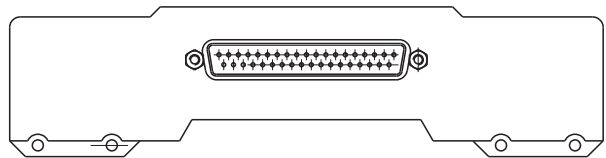
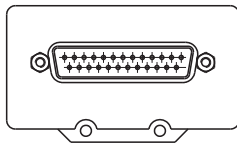
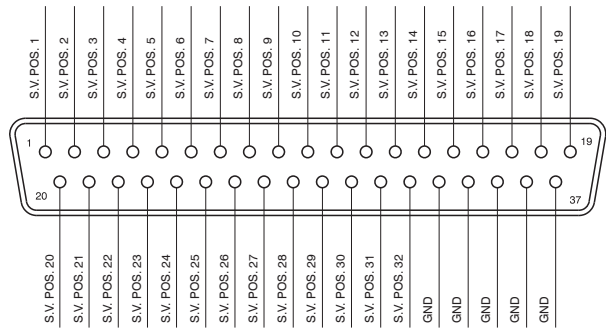
Coding: 2400.37. **L**. **C**

CABLE LENGTH
L 03 = 3 meters
05 = 5 meters
10 = 10 meters
CONNECTOR
C 10 = Stand alone
90 = 90° Angle

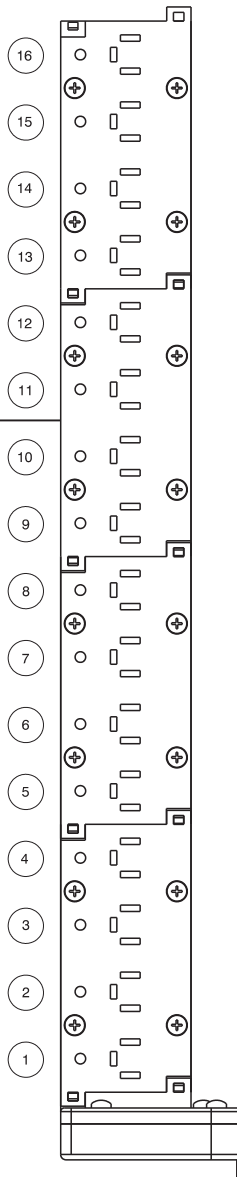
SUB-D 25 POLES CONNECTOR



SUB-D 37 POLES CONNECTOR



Left modules



Right modules

